

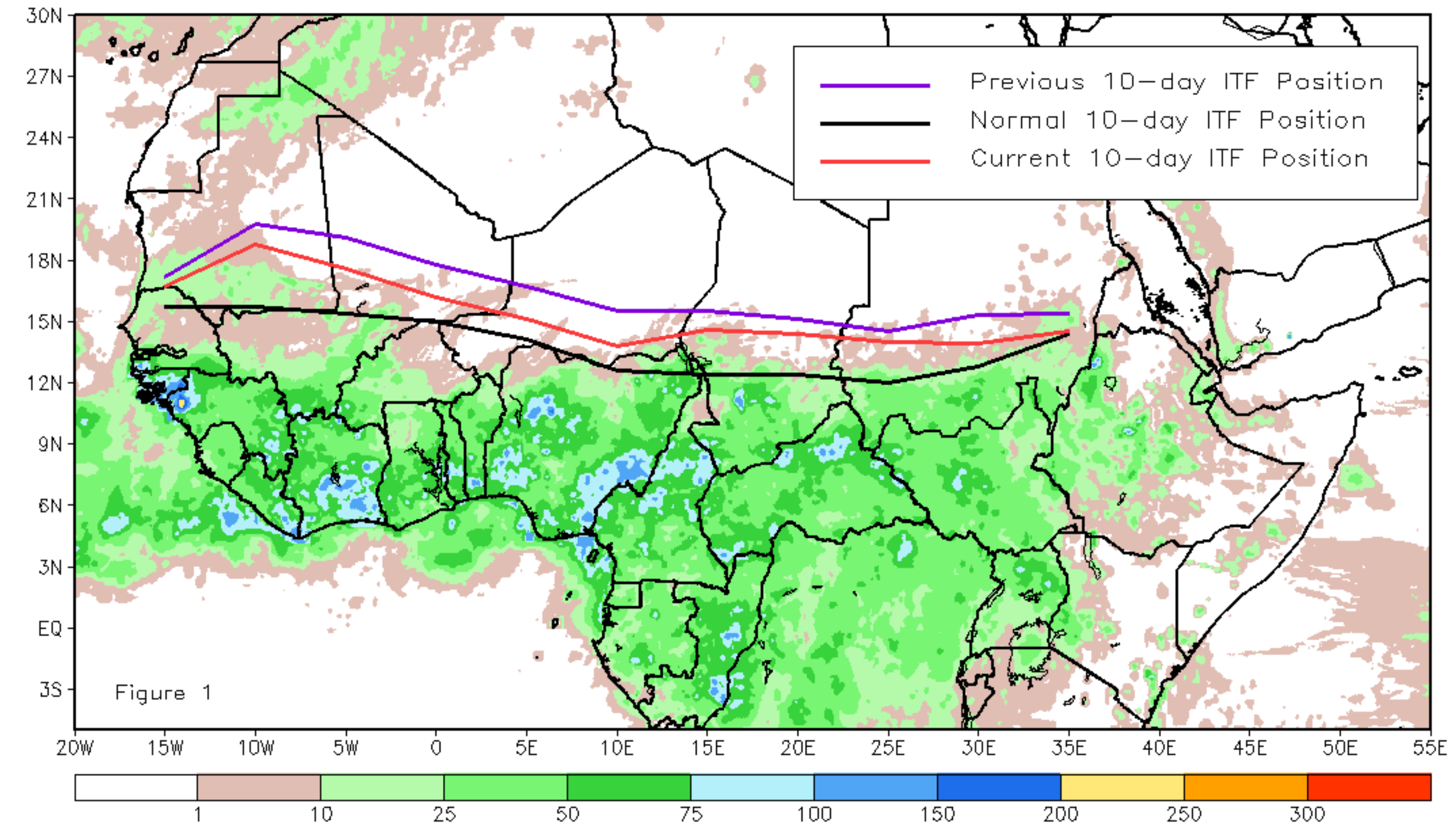
# CPC Africa Desk InterTropical (ITF) Front Analysis October 2024, Dekad 2

## Discussion:

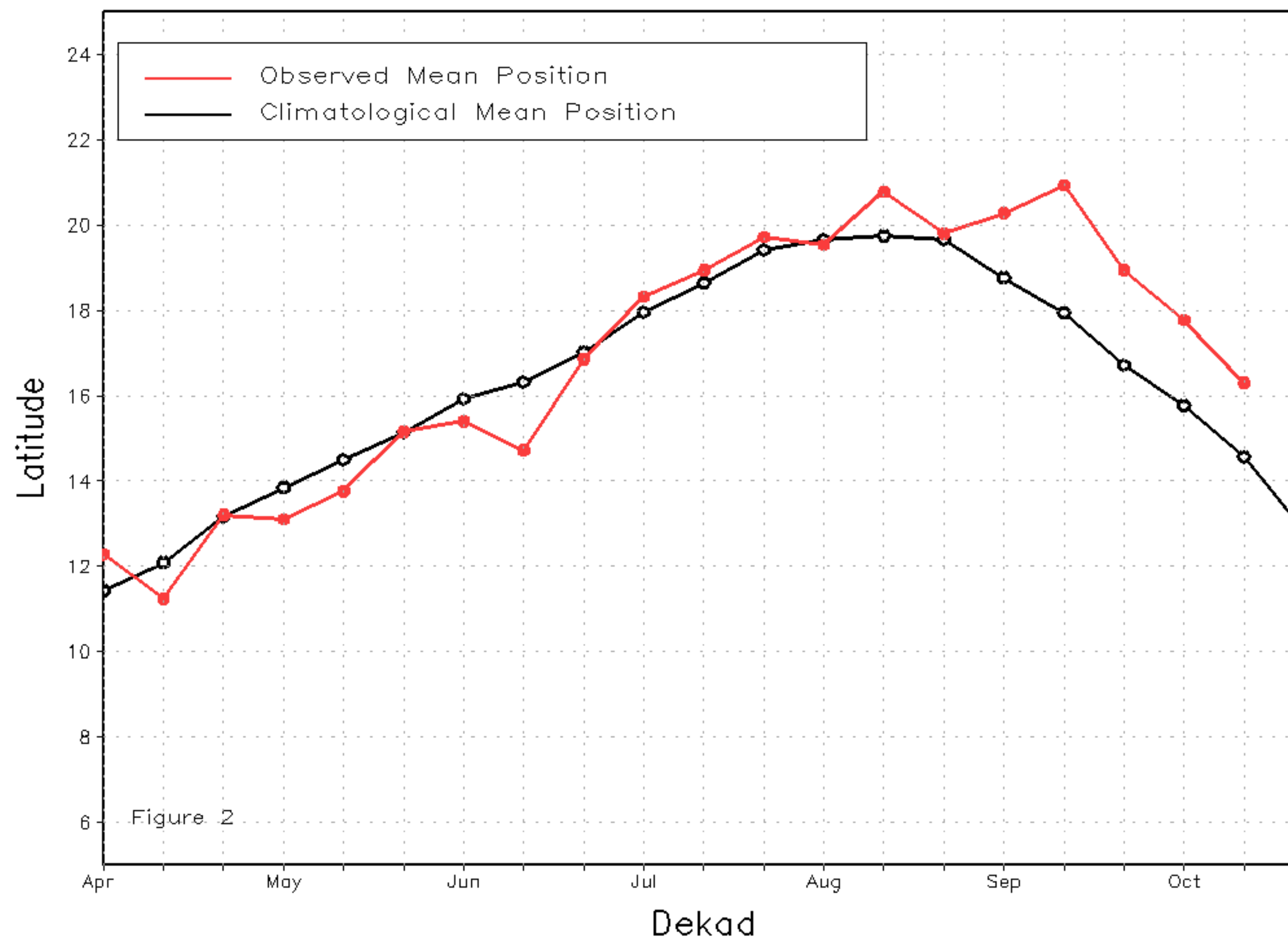
From October 11-20, the Inter-Tropical Front (ITF) moved southward along its entire length compared to its previous position. The western (10W-10E) portion of the ITF was at approximately 16.3N, which remained well above the climatological position (as it has since late-August) by 1.7 degrees. Also, at the eastern (20E-35E) portion, the ITF was approximated at 14.2N, which was above the long-term average position (as it has been since June) by 1.3 degrees. This northward displacement helped result in continued above average rain over Sudan and South Sudan. Figure 1 displays the current position of the ITF relative to the climatological position during the 2nd dekad of October and its previous position during the 1st dekad of October. Figures 2 and 3 are time series, illustrating the latitudinal positions for the western and eastern portions of the ITF, respectively, and their seasonal evolutions since the beginning of April 2024.

17.8  
15.1

Current vs. Normal Dekadal ITF Position  
and RFE Accumulated Precipitation (mm)  
October 2024, Dekad 2



Mean Western Portion of the ITF: Averaged 10W to 10E  
As of: October 2024, Dekad 2



Mean Eastern Portion of the ITF: Averaged 20E to 35E  
As of: October 2024, Dekad 2

