



# CPC Africa Desk InterTropical (ITF) Front Analysis

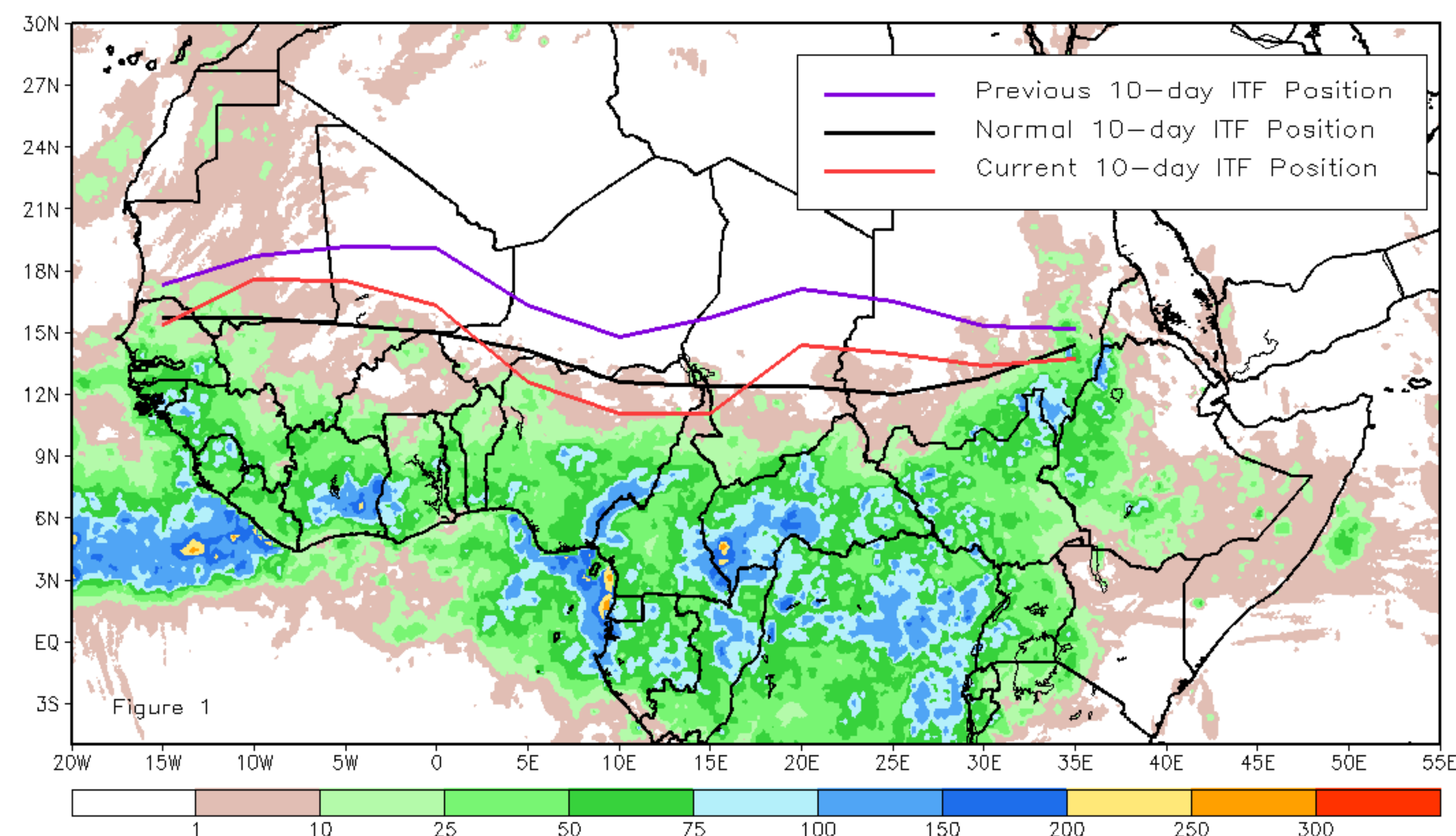
## October 2022, Dekad 2

### Discussion:

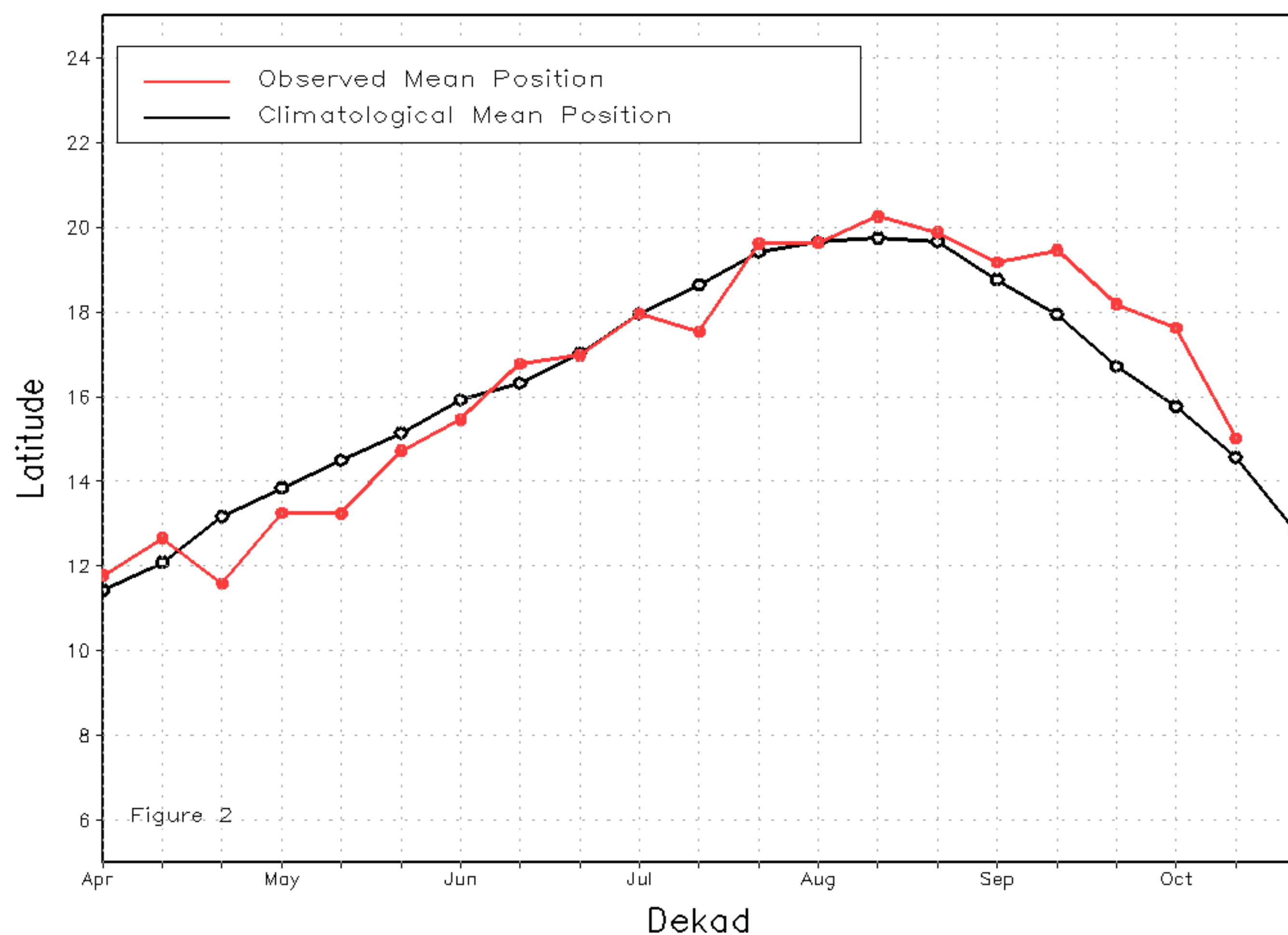
From 11-20 October, the ITF moved south relative to its previous position. Comparing the ITF with climatology, the current ITF had an anomalous northerly position at the western and eastern portions, except over longitude 5E-15E. The western (10W-10E) portion of the ITF was located approximately at 15.0N, above the climatology position by 0.4 degree. The ITF approximately 13.9N, above the climatological position by 1.0 degree. Figure 1 displays the current position of the ITF relative to the long-term average position during the 2nd dekad of October and its previous position during the 1st dekad of October. Figures 2 and 3 are time series, illustrating the latitudinal values of the western and eastern portions of the ITF, respectively, and their seasonal evolutions since the beginning of April 2022.

Current vs. Normal Dekadal ITF Position  
and RFE Accumulated Precipitation (mm)

October 2022, Dekad 2



Mean Western Portion of the ITF: Averaged 10W to 10E  
As of: October 2022, Dekad 2



Mean Eastern Portion of the ITF: Averaged 20E to 35E  
As of: October 2022, Dekad 2

