



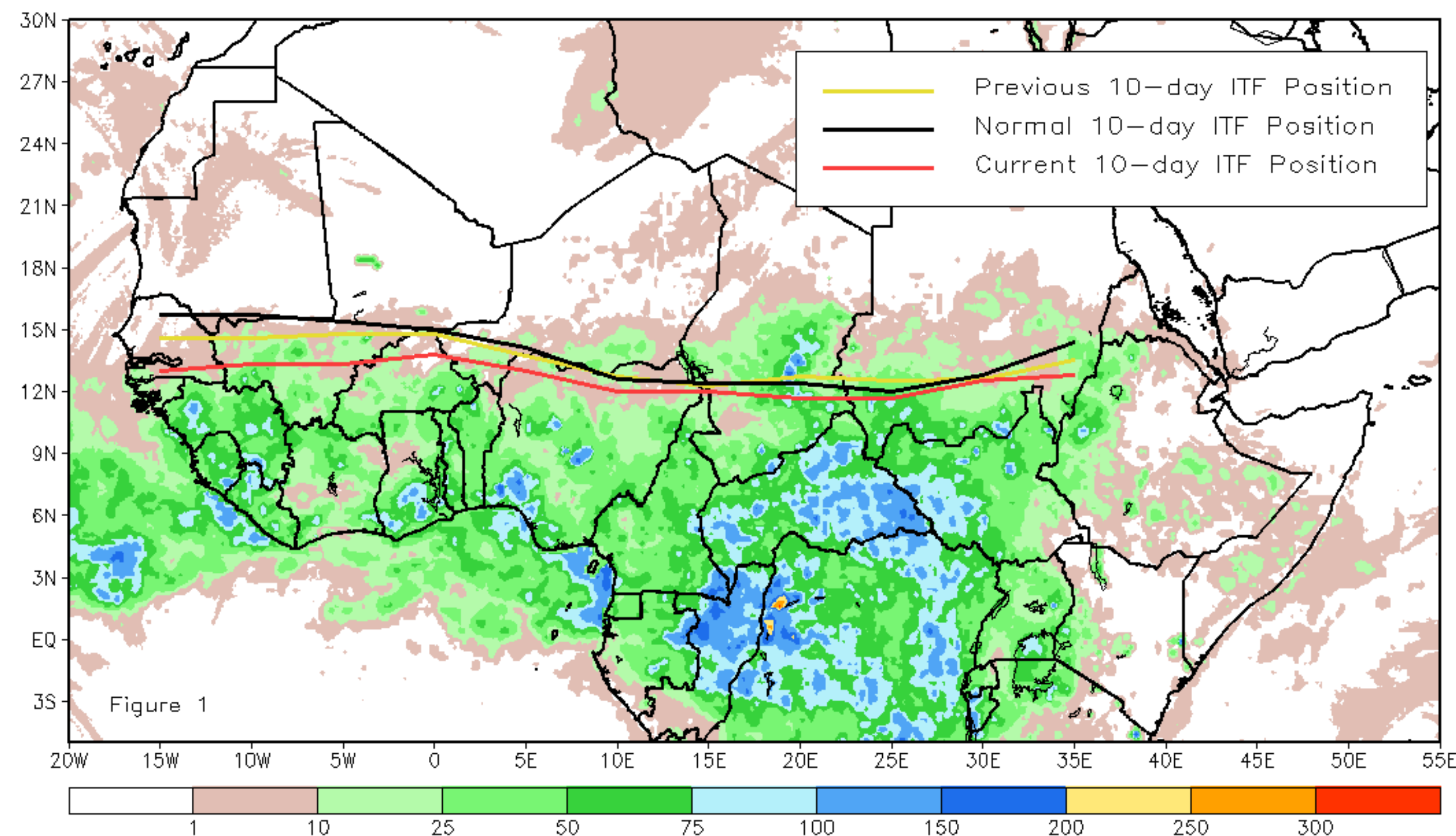
CPC Africa Desk InterTropical (ITF) Front Analysis

October 2021, Dekad 2

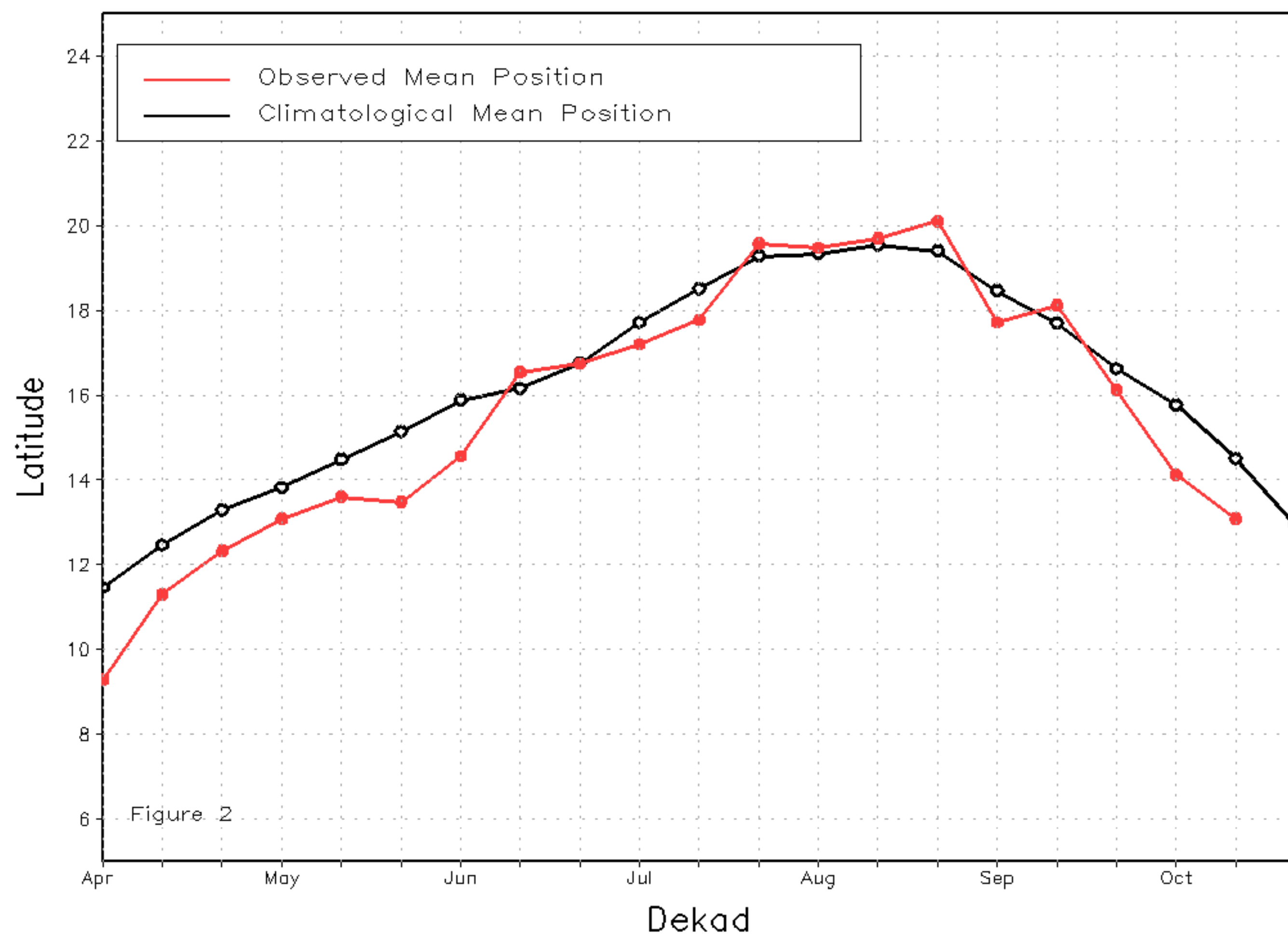
Discussion:

From 11-20 of October, the entire ITF regressed further south as the monsoon rains wind down. The western (10W-10E) portion of the ITF was located approximately at 13.1N, which was 1 degree south of its previous position. It was also south of the climatological position centered at 14.6N. The eastern (20E-35E) portion of the ITF was located at 12.2N, which was south of the climatological position centered at 12.9N and displaced 0.5 degrees further south than the previous dekad. Despite the location, above normal rainfall persisted across Chad. Figure 1 shows the current position of the ITF relative to the long-term average position during the 2nd dekad of October and its previous position during the 1st dekad of October. Figures 2 and 3 are time series, illustrating the latitudinal values of the western and eastern portions of the ITF, respectively, and their seasonal evolutions since the beginning of April, 2021.

Current vs. Normal Dekadal ITF Position
and RFE Accumulated Precipitation (mm)
October 2021, Dekad 2



Mean Western Portion of the ITF: Averaged 10W to 10E
As of: October 2021, Dekad 2



Mean Eastern Portion of the ITF: Averaged 20E to 35E
As of: October 2021, Dekad 2

