



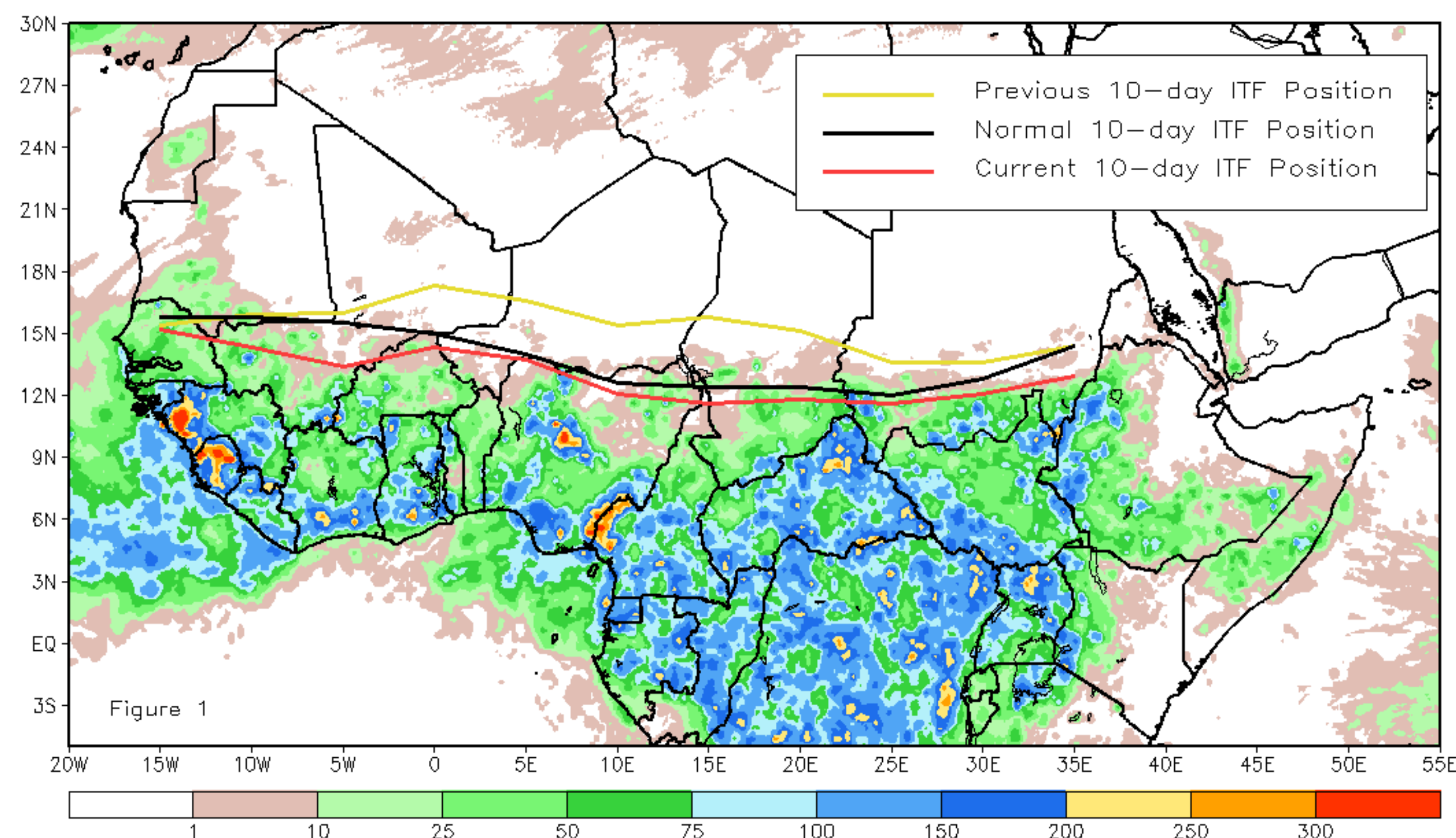
# CPC Africa Desk InterTropical (ITF) Front Analysis

## October 2020, Dekad 2

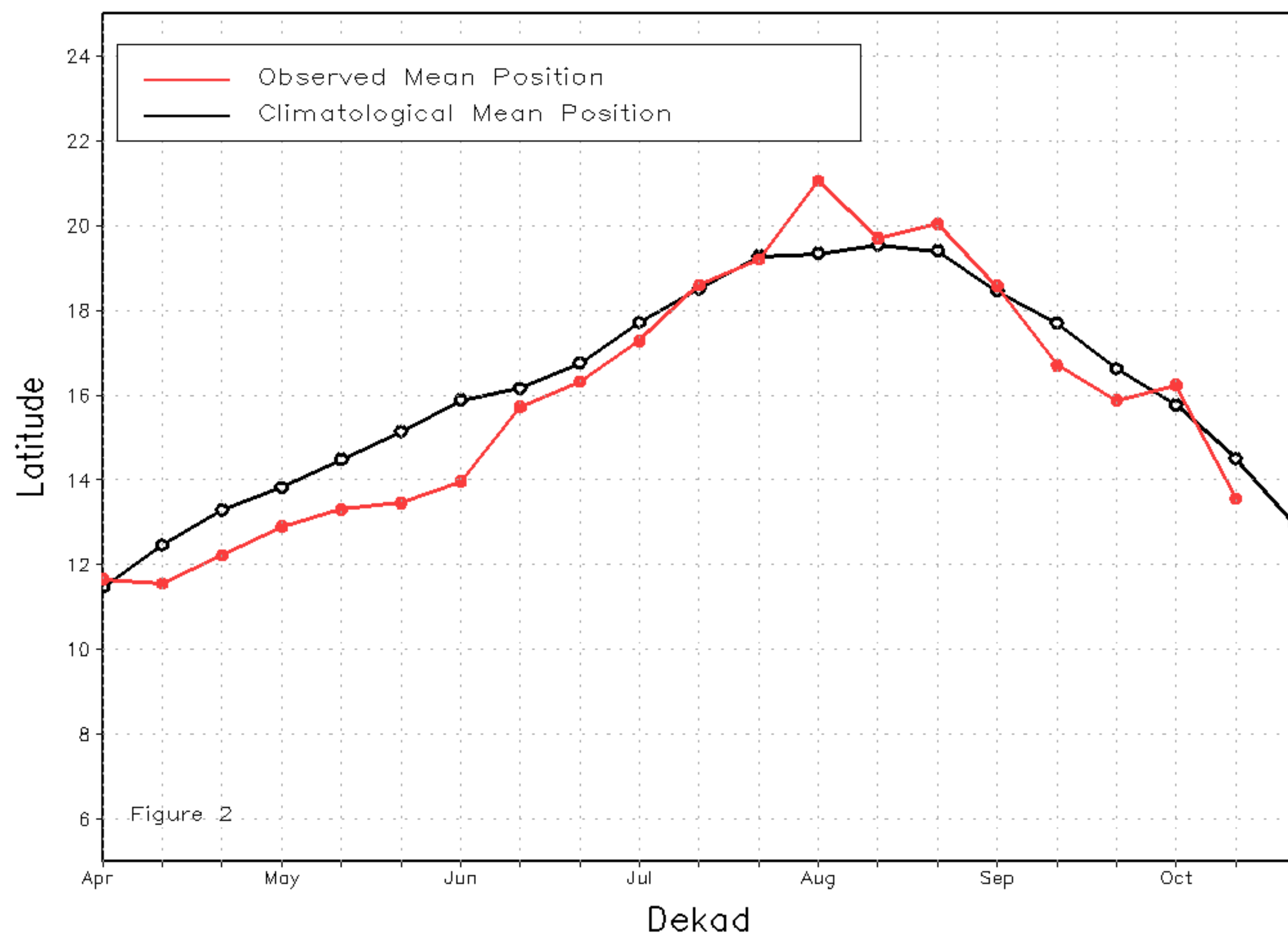
### Discussion:

From October 11-20, the ITF moved significantly southward compared to the previous dekad. Its position is now south of the climatological average along its entire length. The mean western (10W-10E) portion of the ITF was located at 13.5N, which was 2.7 degrees south of its location during the previous dekad. Despite the ITF being 1.1 degrees south of the climatological average, rains remained favorable in areas of Senegal and Mauritania, but less so in Mali. The mean eastern (20E-35E) portion of the ITF was located at 12.1N, which was 2.1 degrees south of its position during the previous dekad. The location was south of the climatological average, but positive rainfall anomalies persisted in the region. Figure 1 shows the current position of the ITF relative to the climatological position during the 2nd dekad of October and its previous position during the 1st dekad of October. Figures 2 and 3 are time series, illustrating the latitudinal values of the western and eastern portions of the ITF, respectively, and their seasonal evolutions since April, 2020.

Current vs. Normal Dekadal ITF Position  
and RFE Accumulated Precipitation (mm)  
October 2020, Dekad 2



Mean Western Portion of the ITF: Averaged 10W to 10E  
As of: October 2020, Dekad 2



Mean Eastern Portion of the ITF: Averaged 20E to 35E  
As of: October 2020, Dekad 2

