



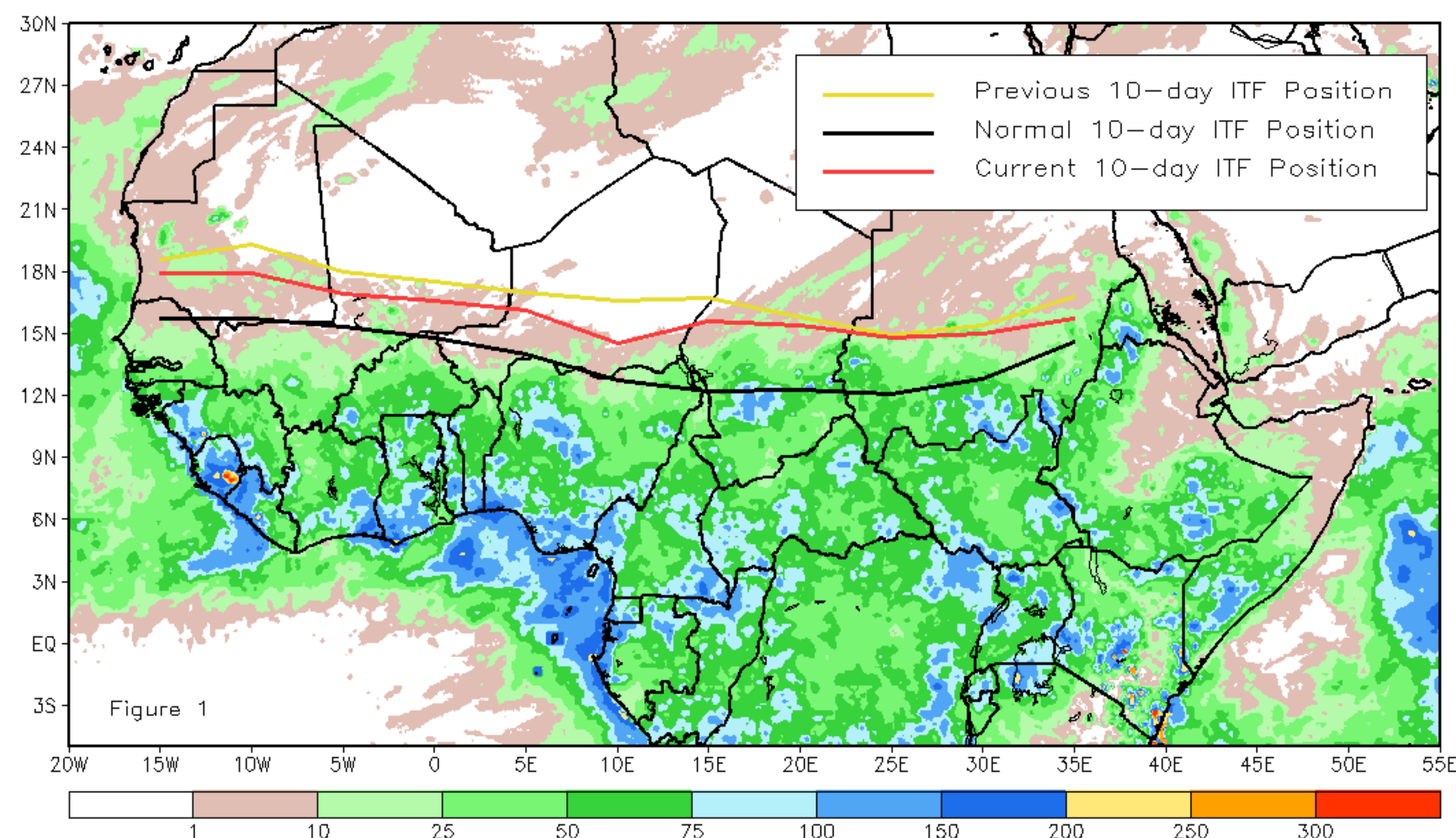
CPC Africa Desk InterTropical (ITF) Front Analysis

October 2019, Dekad 2

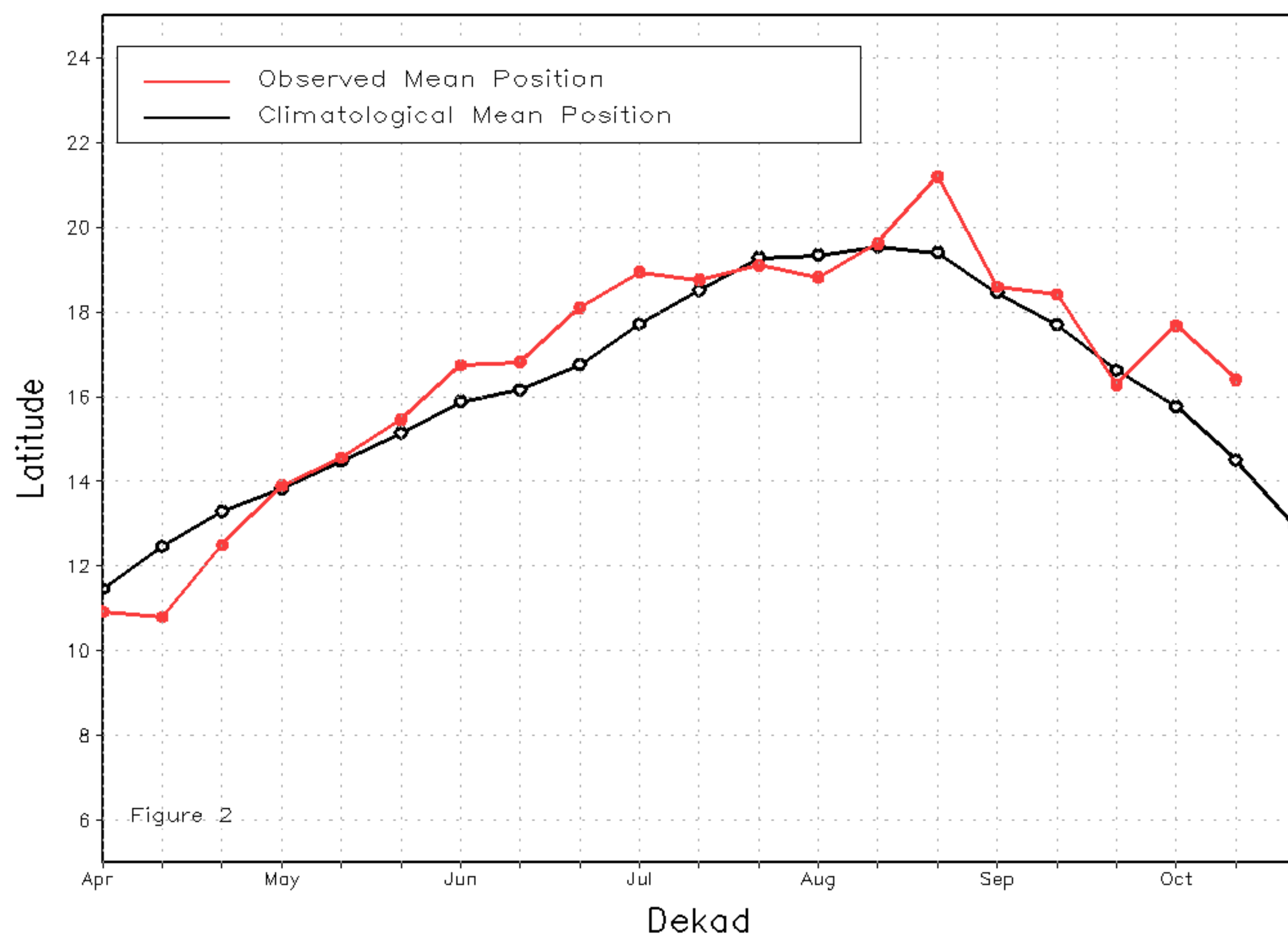
Discussion:

From October 10-20, the entirety of the ITF remained well north of its climatological mean position, but has resumed characteristic southward progression since the previous dekad. The mean position of the western portion of the ITF between 10W-10E is approximated at 16.4 degrees N, which represents a southward shift of 1.3 degrees compared to the previous dekad. Rainfall continues to be widespread and heavier than usual for mid-October across West Africa concurrent with the anomalous northward location of the ITF. The mean position of the eastern portion of the ITF between 20E-35E is 15.2 degrees N, which represents a southward shift of 0.5 degrees compared to the previous dekad. This still puts the ITF location well-above the average position of 12.9 degrees N. As such, rainfall has been abnormally heavy across Sudan, South Sudan, and Ethiopia leading to numerous flooding problems. Figure 1 shows the current position of the ITF relative to the long-term average position during the 2nd dekad of October and its previous position during the 1st dekad of October. Figures 2 and 3 are time series, illustrating the latitudinal values of the western and eastern portions of the ITF, respectively, and their seasonal evolutions since April, 2019.

Current vs. Normal Dekadal ITF Position
and RFE Accumulated Precipitation (mm)
October 2019, Dekad 2



Mean Western Portion of the ITF: Averaged 10W to 10E
As of: October 2019, Dekad 2



Mean Eastern Portion of the ITF: Averaged 20E to 35E
As of: October 2019, Dekad 2

