



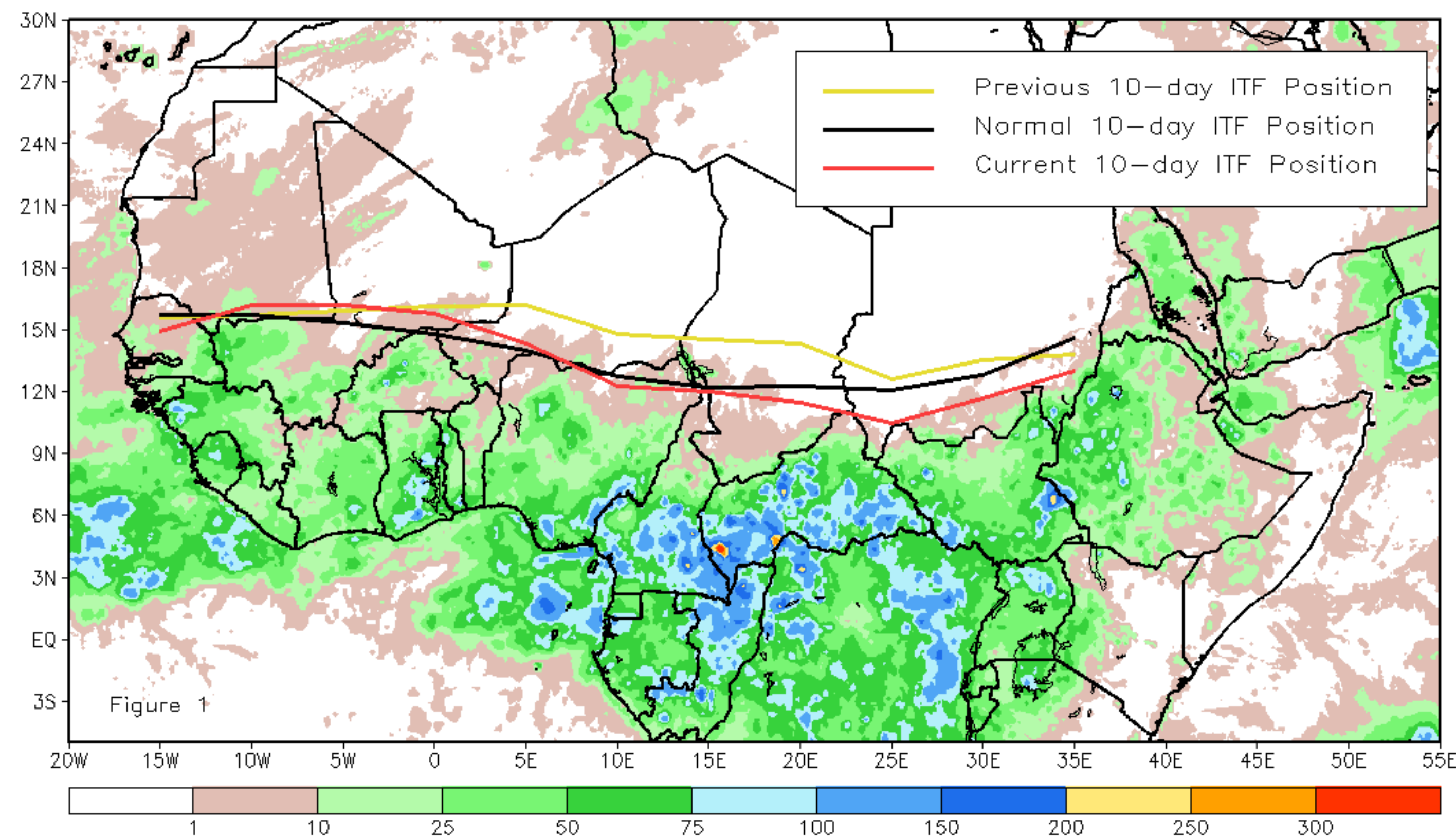
CPC Africa Desk InterTropical (ITF) Front Analysis

October 2018, Dekad 2

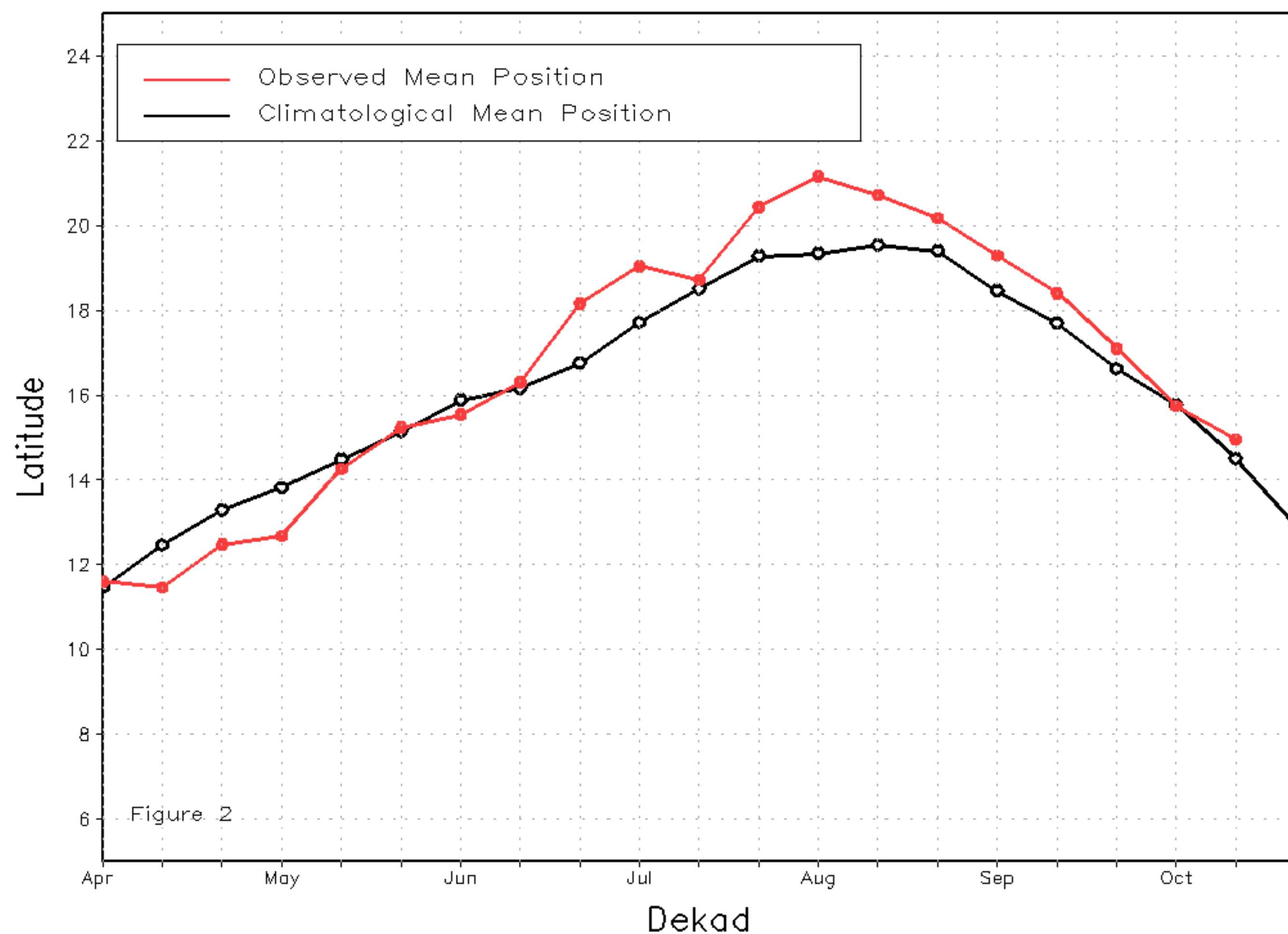
Discussion:

From October 10-20, the ITF generally continued its equatorward retreat, but was slightly north of its average position in West Africa and well to the south of its average position in the east. The mean western (10W-10E) portion of the ITF was approximated at 15.0N, a drop of 0.7 degrees. With the anomalously northward position of the ITF (+.5 degrees), ample late season rains have been present across Senegal, Mali, and Burkina Faso. The mean eastern (20E-35E) portion of the ITF was approximated at 11.7N, well to the south of the previous dekad by 1.9 degrees. The eastern ITF position for mid-October fell below the normal position by 1.2 degrees and marked the 4th consecutive dekad that was below normal. Figure 1 shows the current position of the ITF compared to the climatological position during the 2nd dekad of October, and its previous position during the 1st dekad of October. Figures 2 and 3 are time series, illustrating the latitudinal values of the western and eastern portions of the ITF, respectively, and their seasonal evolutions since April, 2018.

Current vs. Normal Dekadal ITF Position
and RFE Accumulated Precipitation (mm)
October 2018, Dekad 2



Mean Western Portion of the ITF: Averaged 10W to 10E
As of: October 2018, Dekad 2



Mean Eastern Portion of the ITF: Averaged 20E to 35E
As of: October 2018, Dekad 2

