



CPC Africa Desk InterTropical (ITF) Front Analysis

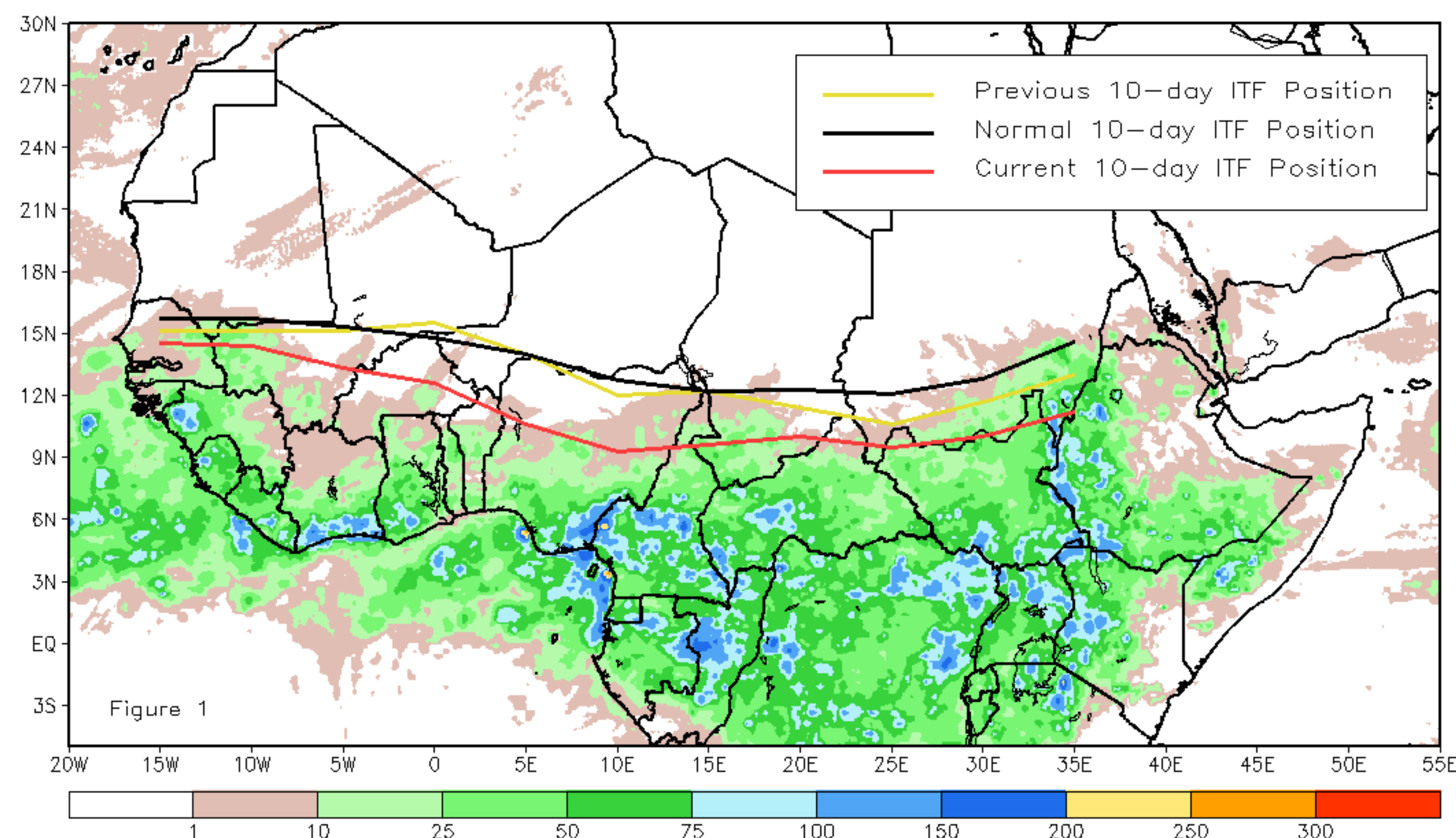
October 2017, Dekad 2

Discussion:

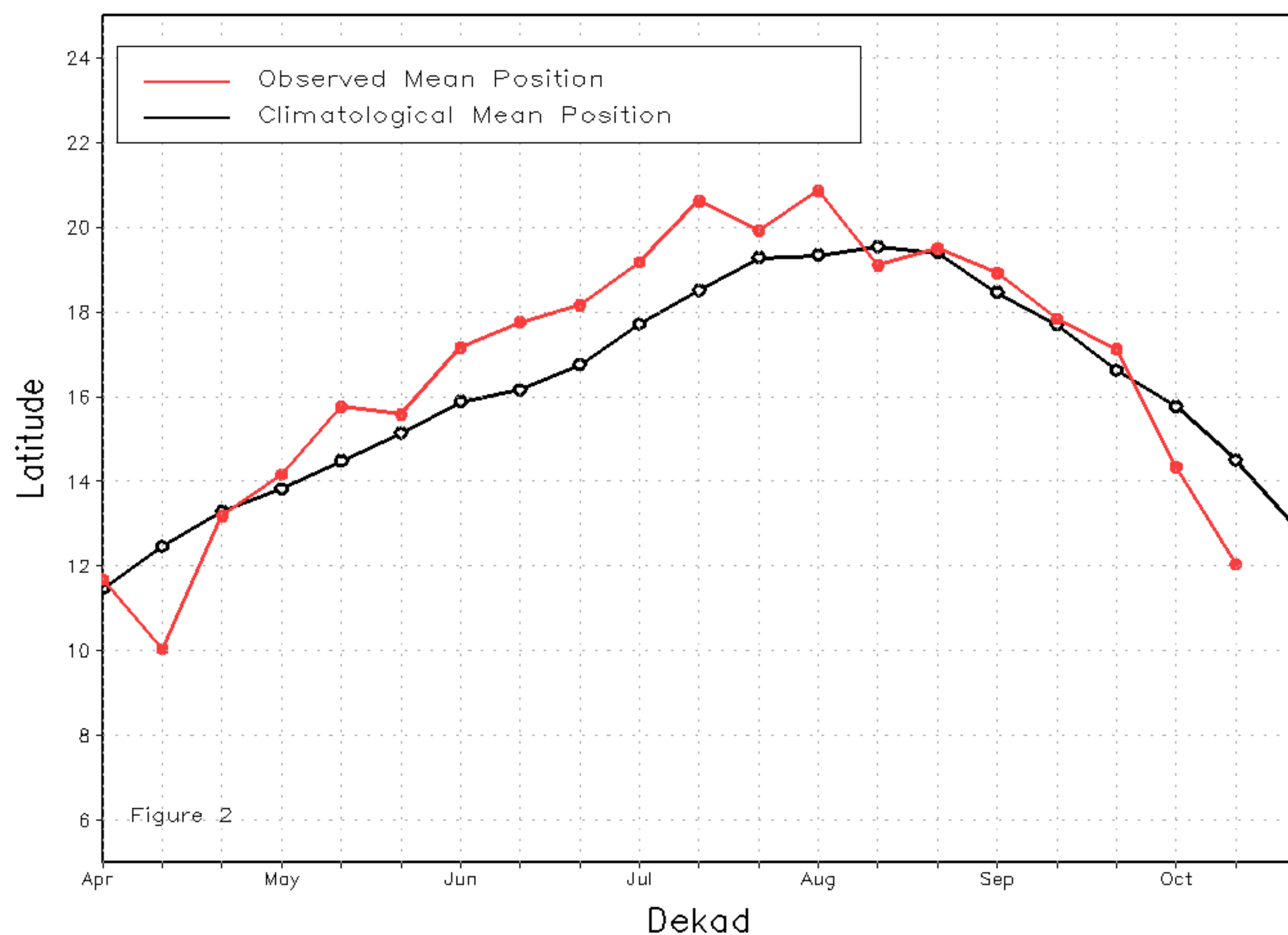
From October 10-20, the ITF continued its rapid equatorward retreat and was everywhere located south of its climatological position. The mean western (10W-10E) portion of the ITF was approximated at 12.0 degrees N and was south of the mean climatological position by 1.5 degrees. This was, similar to last week, a large shift of 2.3 degrees. In accordance with the quicker than normal ITF retreat, rains were suppressed below normal across all of West Africa. The mean eastern (20E-35E) portion of the ITF was approximated at 10.2 degrees N and was well to the south of the average position by 2.7 degrees. Drier than normal conditions were observed during the dekad in south Sudan and Central African Republic, but rainy conditions were able to persist in Ethiopia. Figure 1 shows the current position of the ITF relative to its climatological position during the 2nd dekad of October and its previous position during the 1st dekad of October. Figures 2 and 3 are time series, illustrating the mean latitudinal values of the western and eastern portion of the ITF, respectively, and their evolutions since April, 2017.

Current vs. Normal Dekadal ITF Position
and RFE Accumulated Precipitation (mm)

October 2017, Dekad 2



Mean Western Portion of the ITF: Averaged 10W to 10E
As of: October 2017, Dekad 2



Mean Eastern Portion of the ITF: Averaged 20E to 35E
As of: October 2017, Dekad 2

