



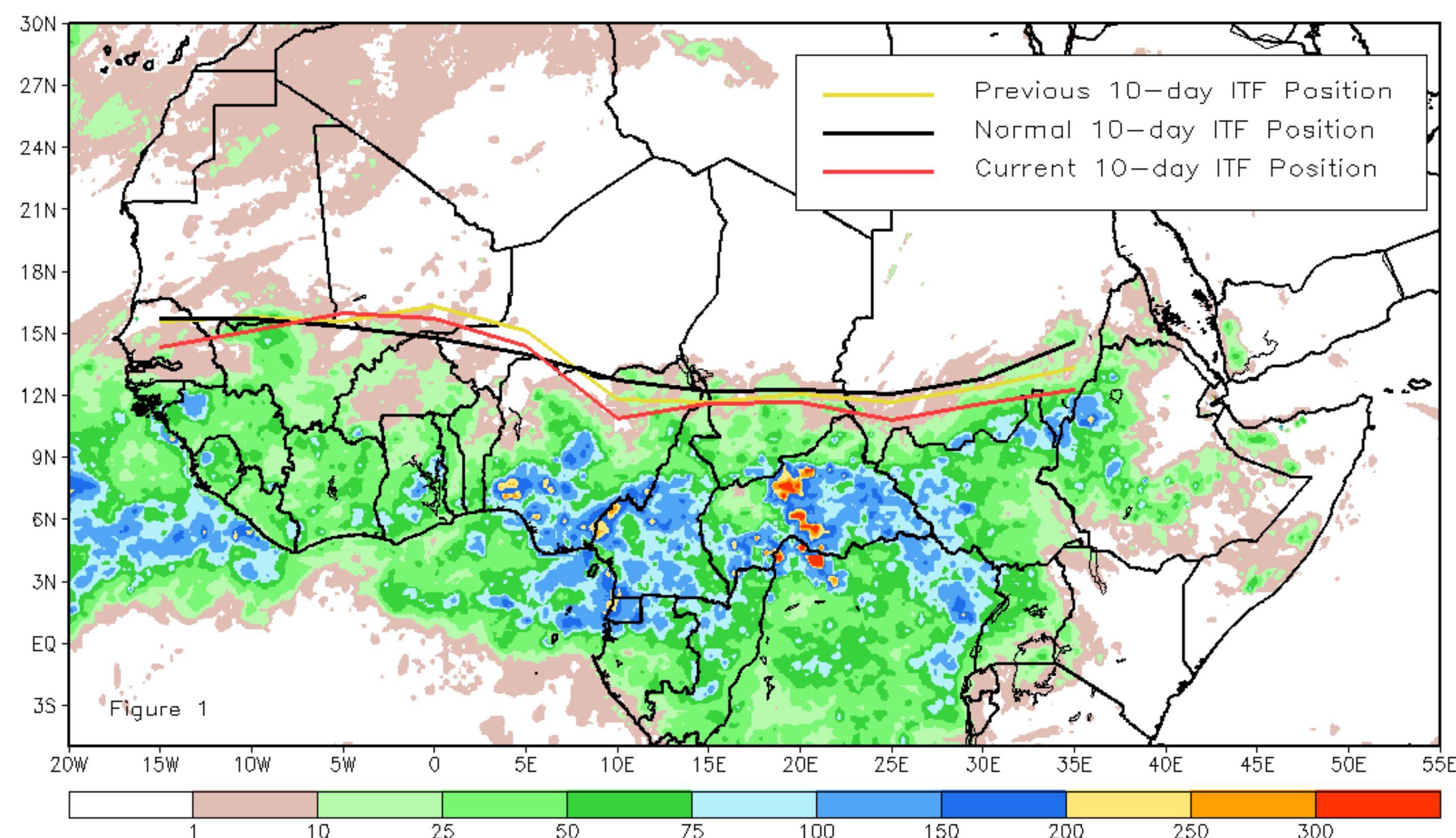
# CPC Africa Desk InterTropical (ITF) Front Analysis

## October 2016, Dekad 2

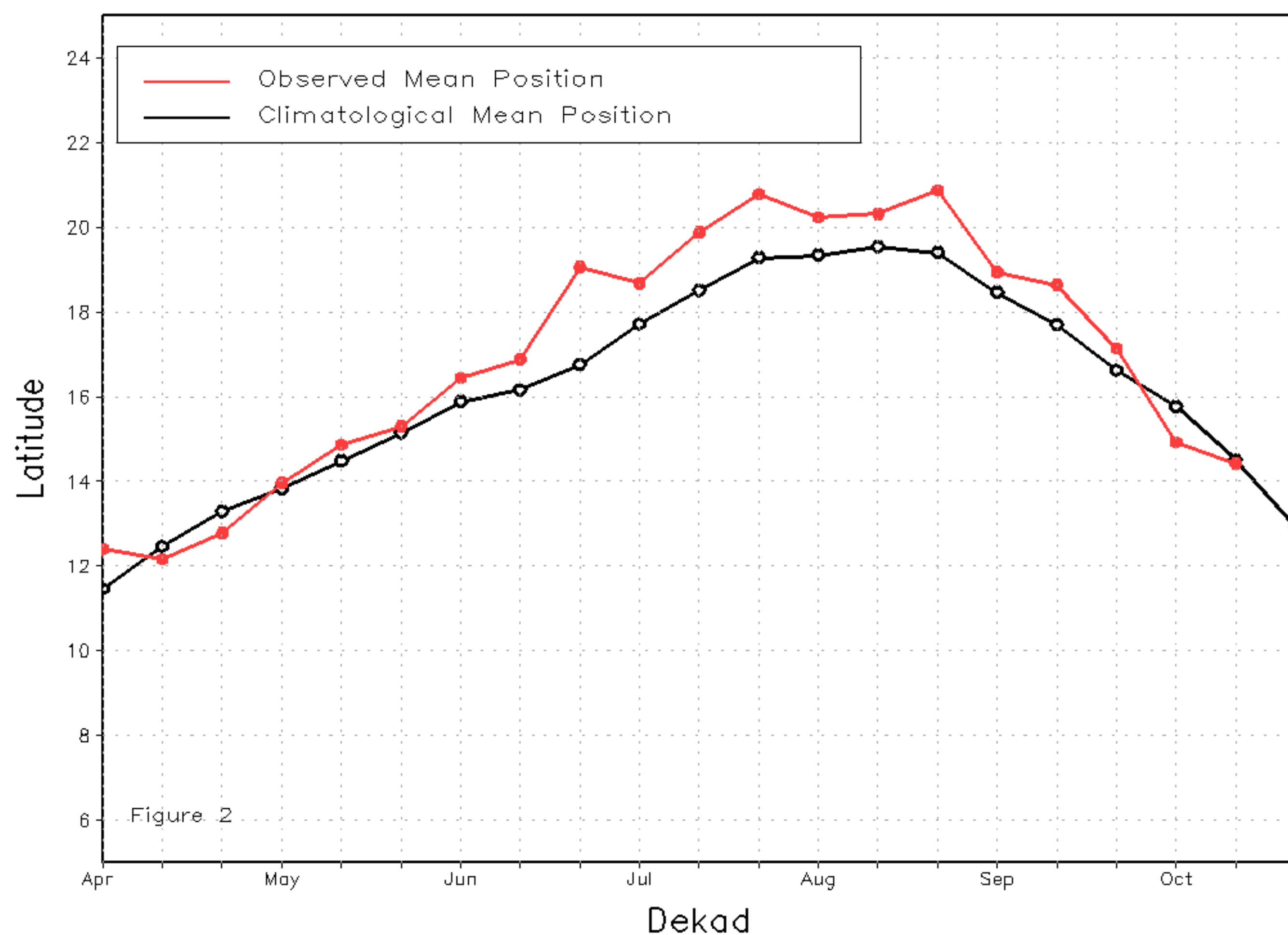
### Discussion:

From October 11-20, the equatorward shift of the ITF continued at a slower pace. Seasonal rains have been diminishing reliably along with the retreat of the ITF. From 10W-10E, the mean western position of the ITF was located at approximately 14.4N, south of its previous mean position (14.9N) during the first dekad of October. The mean position was very close to the climatological normal position (14.5N) for early October. From 20E-35E, the mean eastern position of the ITF was located at approximately 11.6N, and remained well below the climatological normal position (12.9N), making for 8 consecutive dekads below normal dating back to early August. Figure 1 shows the current position of the ITF relative to its climatological normal position during the 2nd dekad of October, and its previous location during the 1st dekad of October. Figures 2 and 3 are time series, illustrating the mean latitudinal values of the western and eastern portions of the ITF, respectively, and their evolutions since April, 2016.

Current vs. Normal Dekadal ITF Position  
and RFE Accumulated Precipitation (mm)  
October 2016, Dekad 2



Mean Western Portion of the ITF: Averaged 10W to 10E  
As of: October 2016, Dekad 2



Mean Eastern Portion of the ITF: Averaged 20E to 35E  
As of: October 2016, Dekad 2

