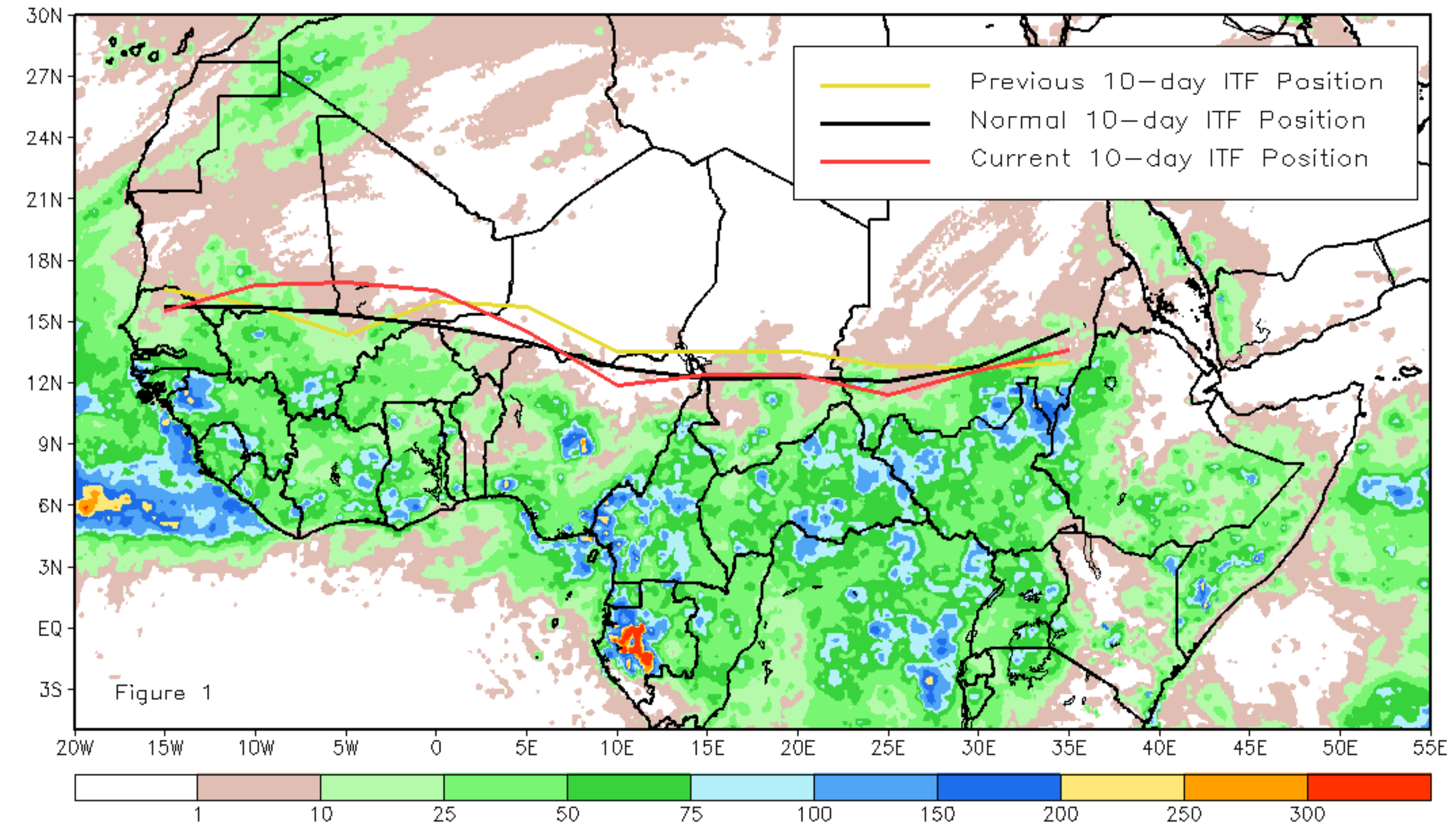


CPC Africa Desk InterTropical (ITF) Front Analysis October 2015, Dekad 2

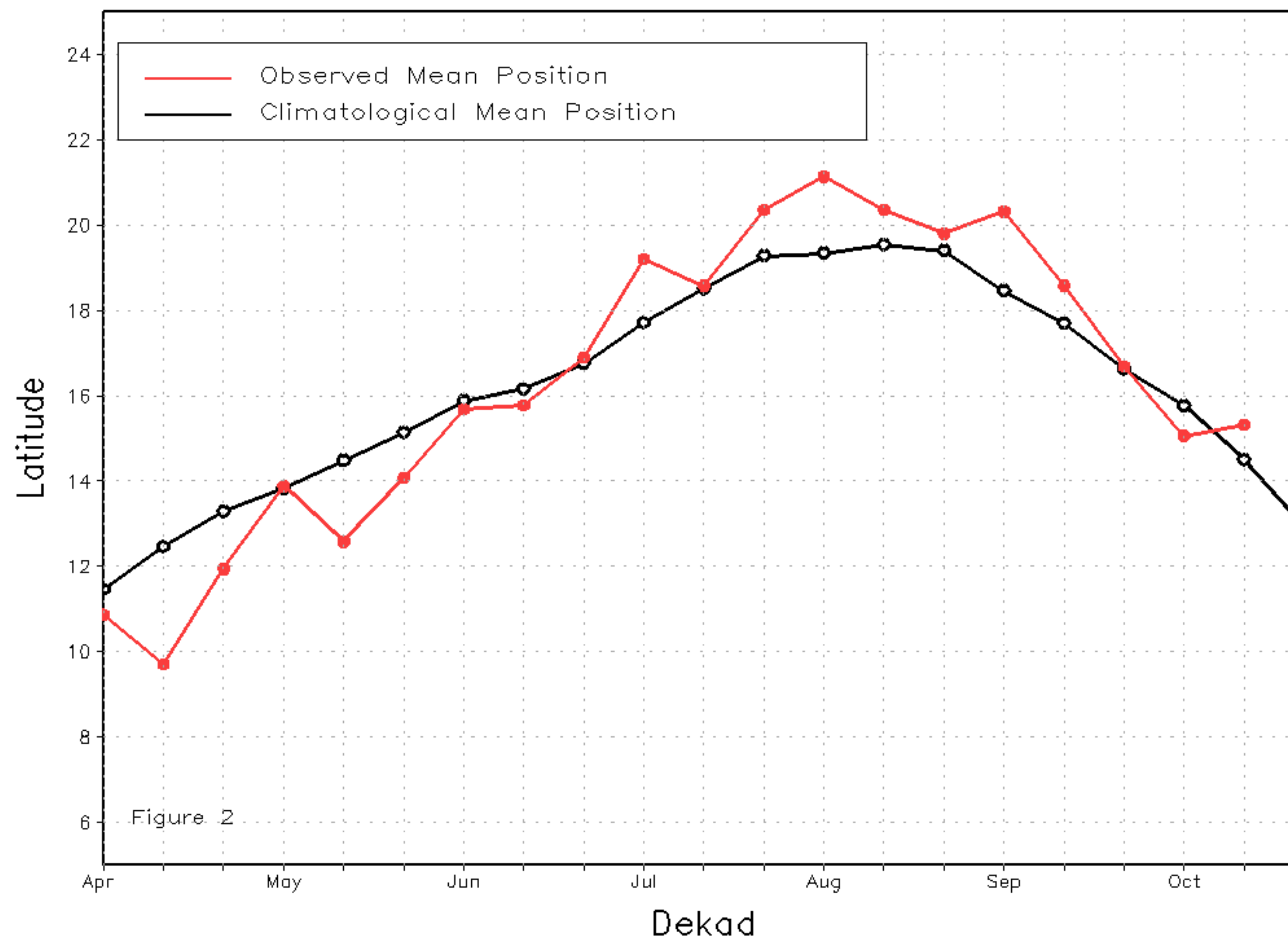
Discussion:

From October 11-20, 2015, the ITF experienced a northward movement over its western portion, while it advanced farther south across its eastern part relative to the former position of the ITF during the previous dekad. The mean western (10W-10E) portion of the ITF was located near 15.3 degrees N, which was to the north of the average position by 0.8 degree. As a result, this anomalous northerly position of the ITF over West Africa has brought above-average rain as far north as south-central Mauritania. Meanwhile, the mean eastern (20E-35E) portion of the ITF was approximated at 12.5 degrees N and was to the south of the mean position by 0.4 degree. Though, heavy and well above-average rain was observed in southeastern Sudan and northeastern South Sudan. Figure 1 displays the current position of the ITF relative to its climatological position during the second dekad of October and its previous position during the first dekad of October. Figures 2 and 3 are time series, illustrating the mean latitudinal values of the western and eastern portion of the ITF, respectively, and their evolutions since April, 2015.

Current vs. Normal Dekadal ITF Position
and RFE Accumulated Precipitation (mm)
October 2015, Dekad 2



Mean Western Portion of the ITF: Averaged 10W to 10E
As of: October 2015, Dekad 2



Mean Eastern Portion of the ITF: Averaged 20E to 35E
As of: October 2015, Dekad 2

