



CPC Africa Desk InterTropical (ITF) Front Analysis

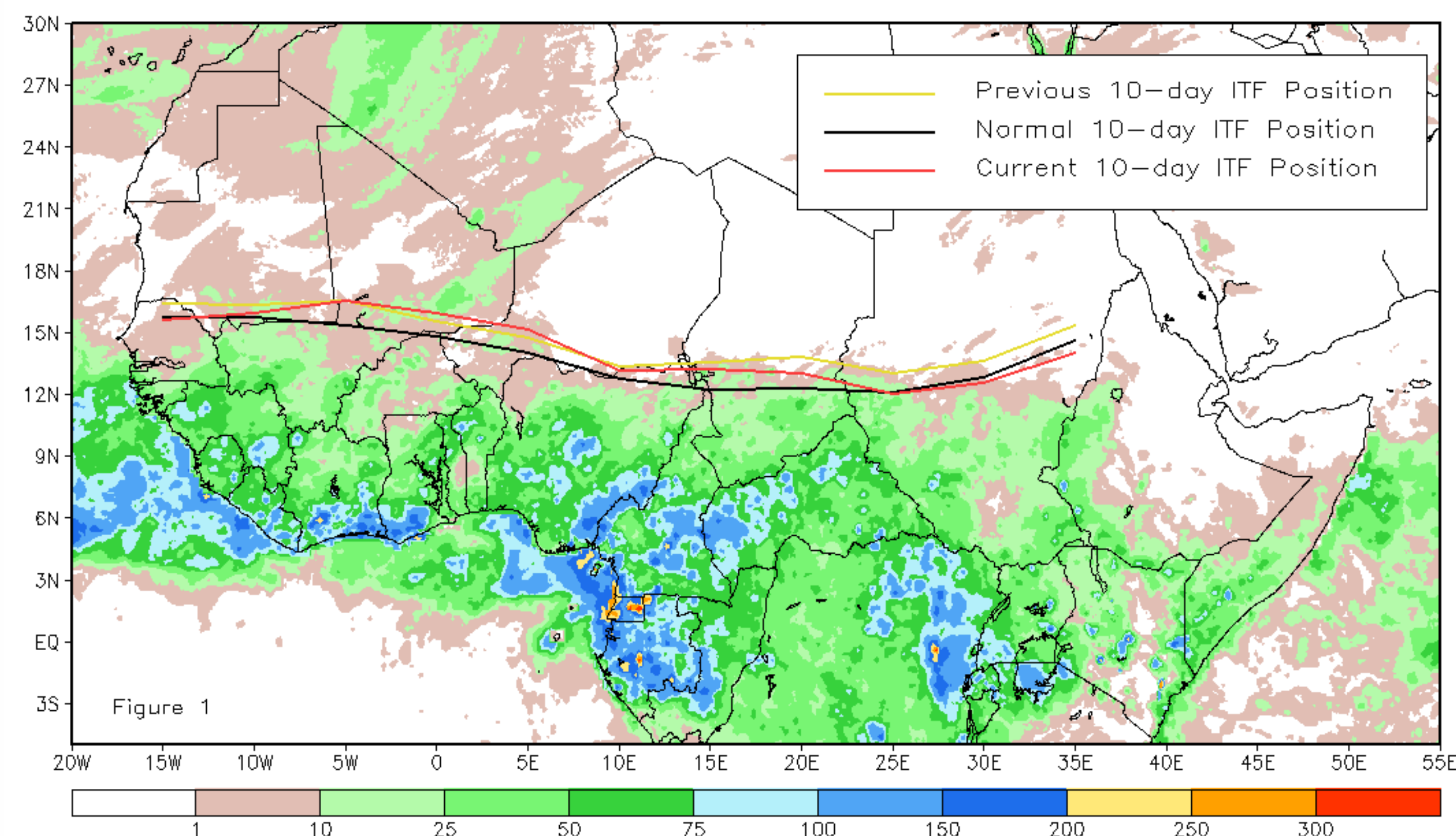
October 2012, Dekad 2

Discussion:

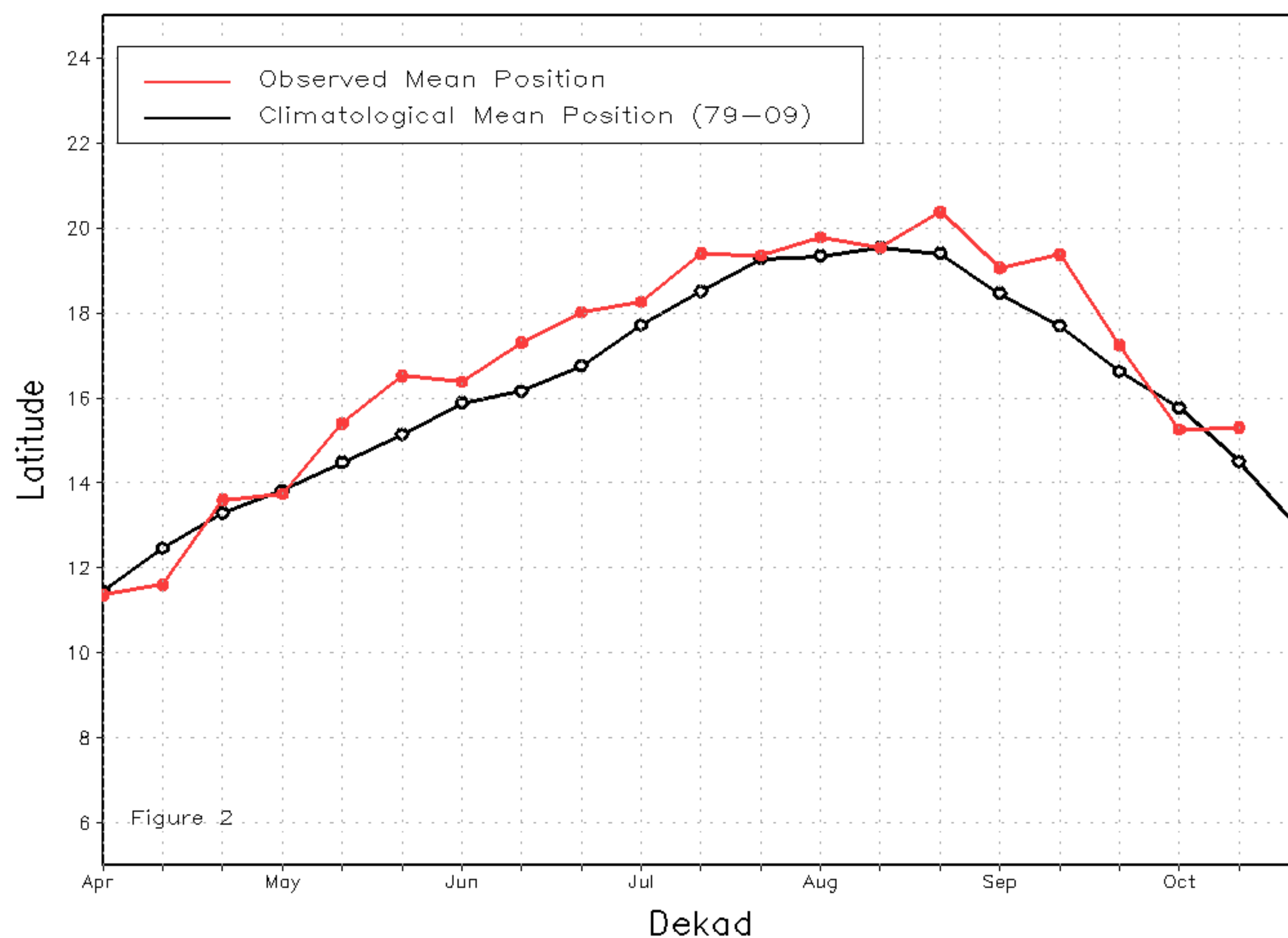
From October 11-20, 2012, compared to the first dekad of the month, the ITF remained relatively stationary across West Africa, whereas it advanced further south over parts of eastern Africa. In West Africa, vigorous southerly winds from the Gulf of Guinea provided energy for isolated light to moderate rainfall across Mali, Burkina Faso, and western Niger. Conversely, active northerly winds helped to push wind convergence to the south across Chad and Sudan. The mean western segment of the ITF was centered near 15.3 degrees North and was located 0.8 degree to the north of the mean average position. Meanwhile, the mean eastern portion of the ITF returned to its climatological position and was centered upon 12.9 degrees North. Figure 1 shows the current ITF position relative to its long-term average position during the second dekad of October and its previous position during the first dekad of October. Figures 2 and 3 are time series, illustrating the mean latitudinal values of the western and eastern portion of the ITF, respectively, and their evolutions since April, 2012.

Current vs. Normal Dekadal ITF Position
and RFE Accumulated Precipitation (mm)

October 2012, Dekad 2



Mean Western Portion of the ITF: Averaged 10W to 10E
As of: October 2012, Dekad 2



Mean Eastern Portion of the ITF: Averaged 20E to 35E
As of: October 2012, Dekad 2

