



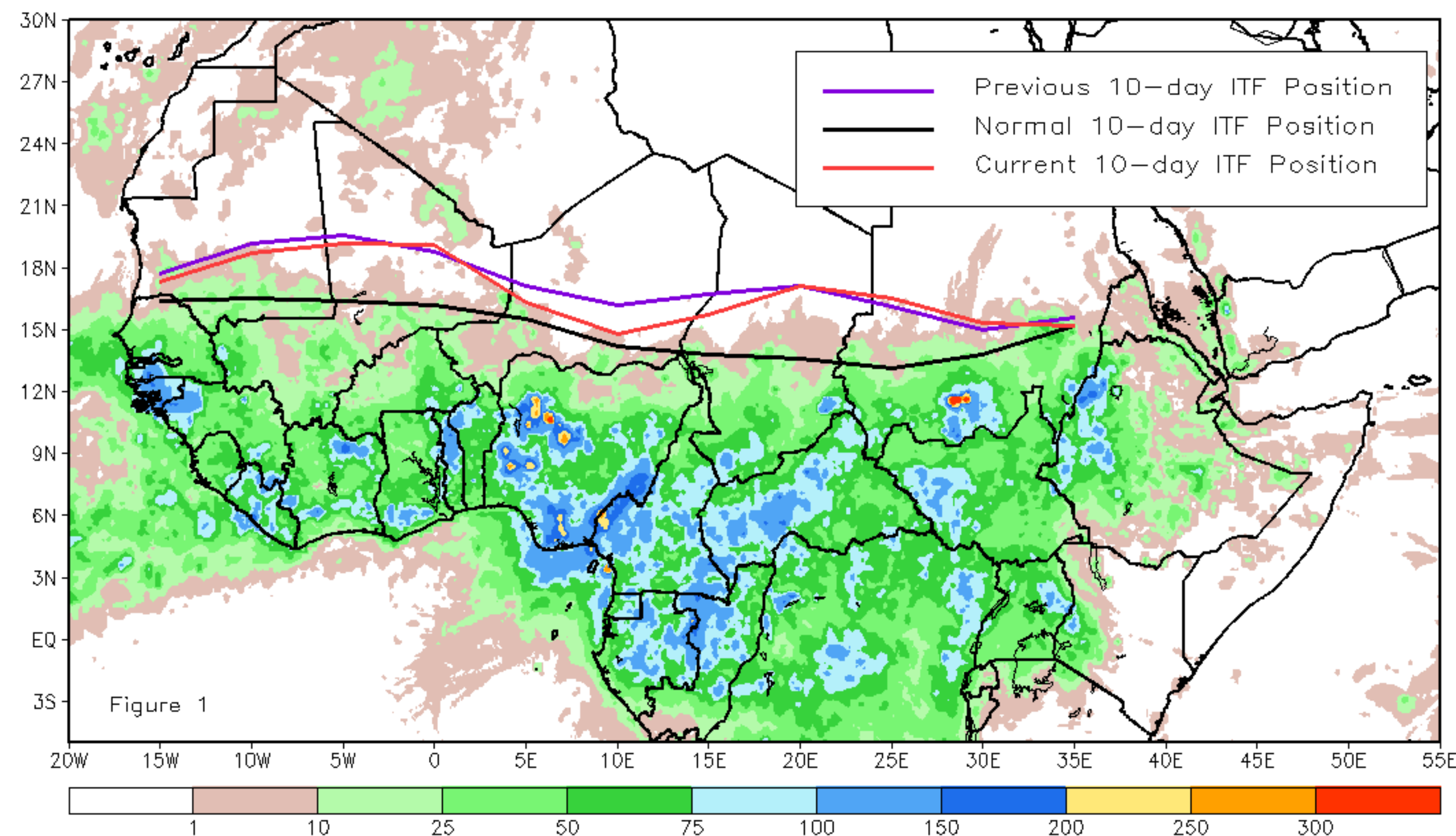
CPC Africa Desk InterTropical (ITF) Front Analysis

October 2022, Dekad 1

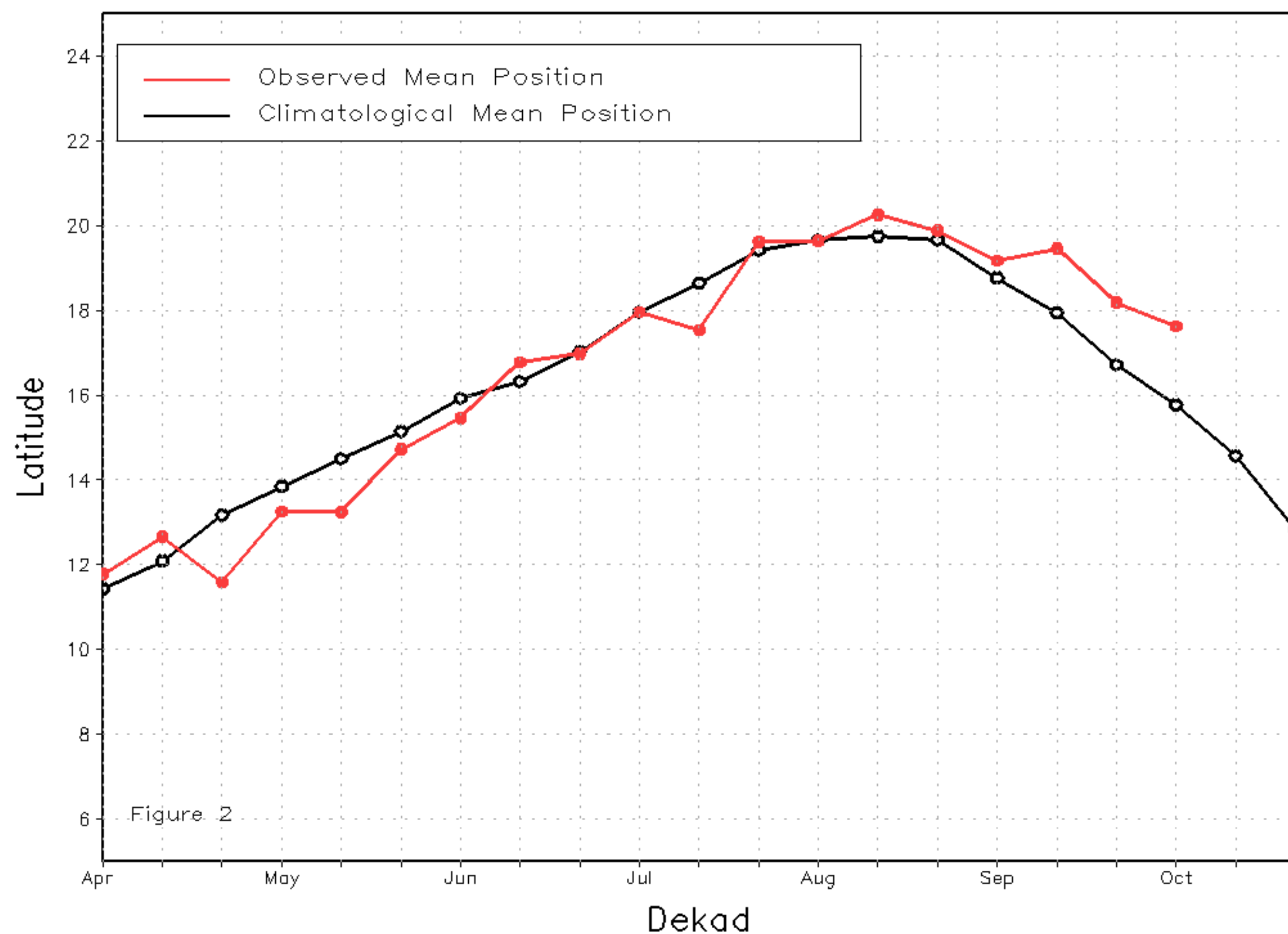
Discussion:

From 1-10 October, the ITF moved south relative to its previous position, except in the eastern portion. Comparing the ITF with climatology, the current ITF had an anomalous northerly position at both the western and eastern portions. The western (10W-10E) portion of the ITF was located approximately at 17.6N, above the climatology position by 1.8 degrees. The ITF (20E-35E) portion was approximately 16.0N, above the climatological position by 2.1 degrees. Figure 1 displays the current position of the ITF relative to the long-term average position during the 1st dekad of October and its previous position during the 3rd dekad of September. Figures 2 and 3 are time series, illustrating the latitudinal values of the western and eastern portions of the ITF, respectively, and their seasonal evolutions since the beginning of April 2022.

Current vs. Normal Dekadal ITF Position
and RFE Accumulated Precipitation (mm)
October 2022, Dekad 1



Mean Western Portion of the ITF: Averaged 10W to 10E
As of: October 2022, Dekad 1



Mean Eastern Portion of the ITF: Averaged 20E to 35E
As of: October 2022, Dekad 1

