



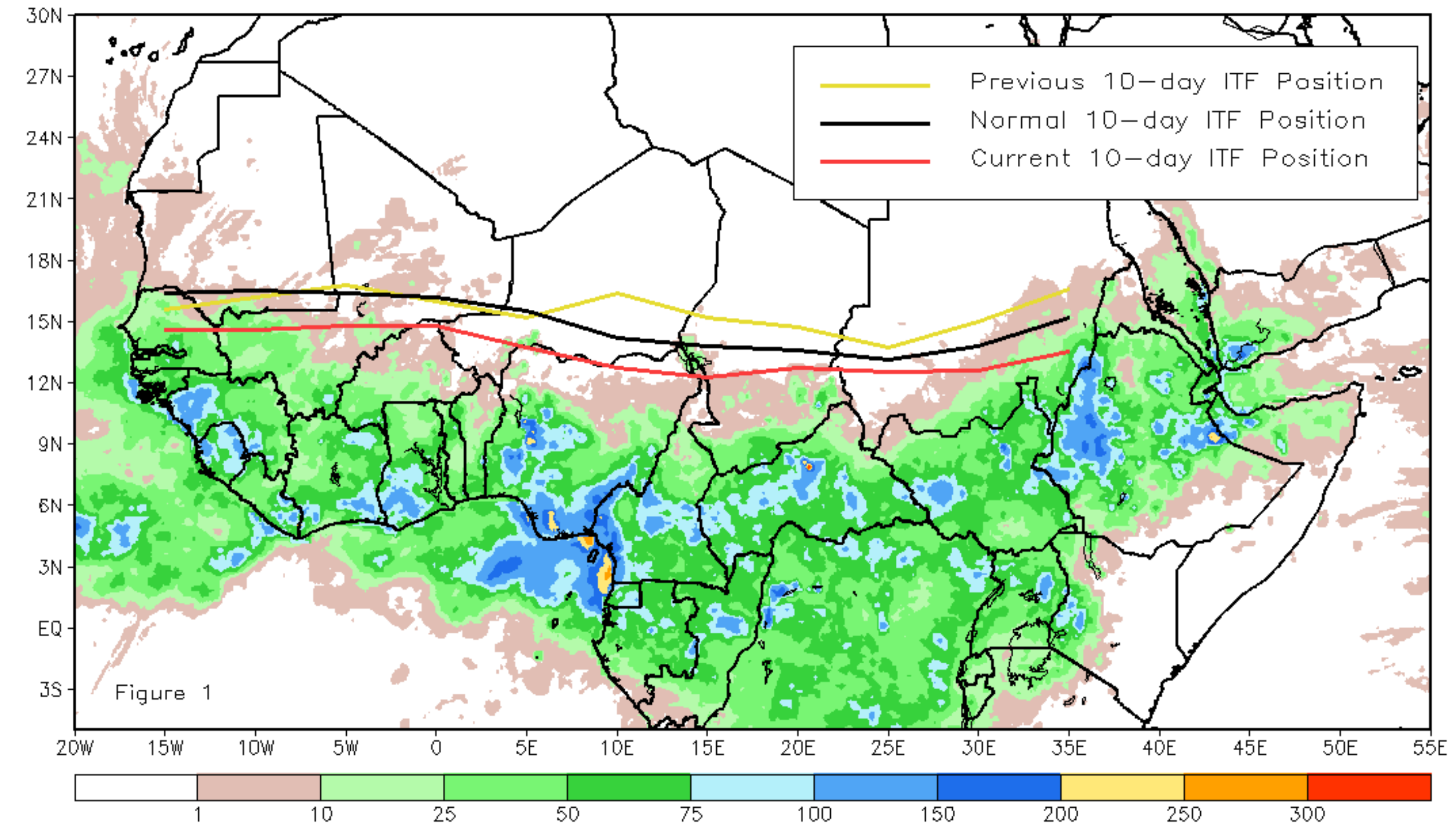
# CPC Africa Desk InterTropical (ITF) Front Analysis

## October 2021, Dekad 1

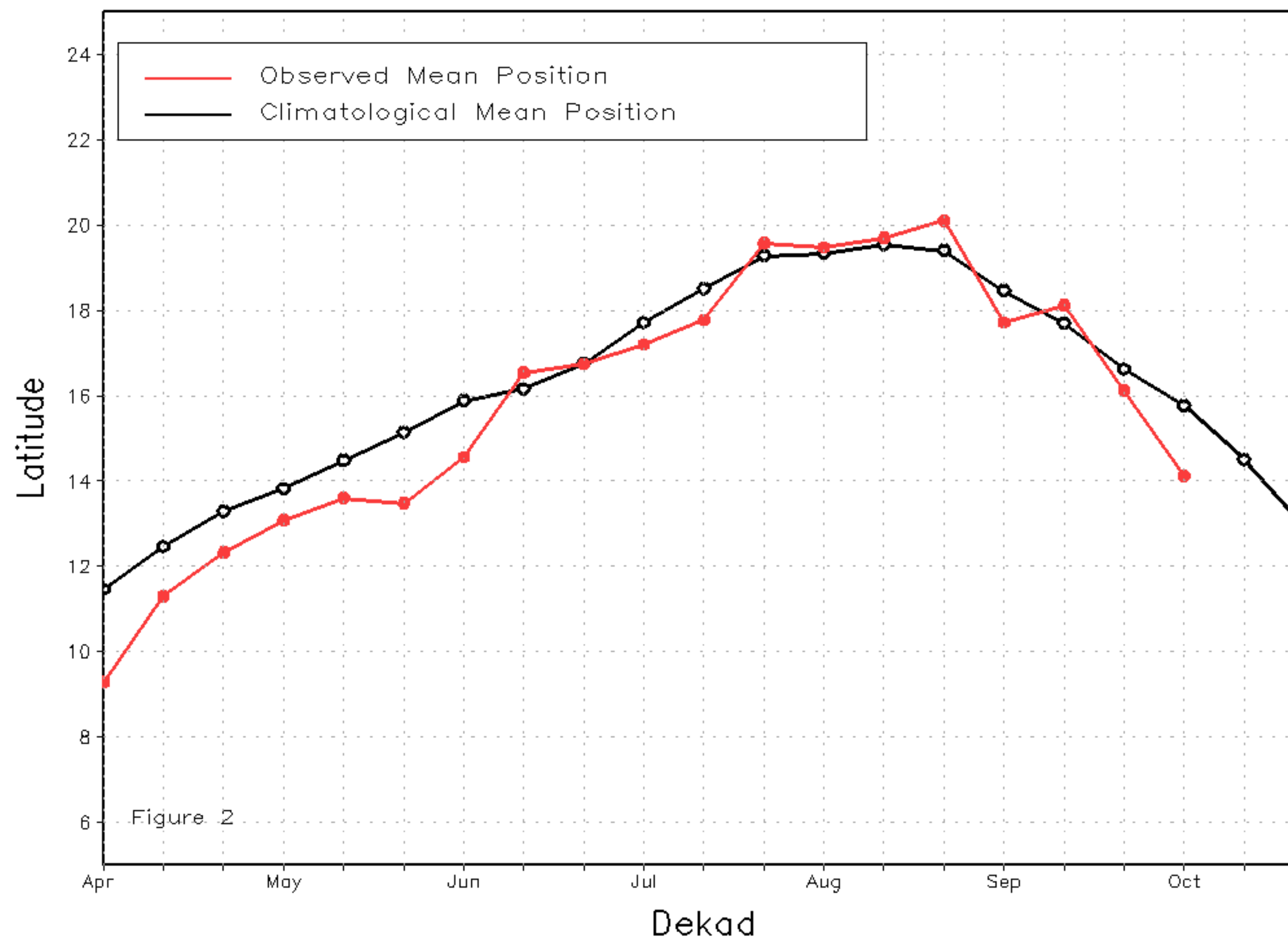
### Discussion:

From 1-10 of October, the ITF moved further south compared to its previous dekad. The western (10W-10E) portion of the ITF was located approximately at 14.1N, which was 2 degrees south of its previous position. It was also well south of the climatological position centered at 15.8N. This ITF trend and location helps explain the decreasing and presently below average rainfall across Chad, northern Nigeria, and northern Cameroon. The eastern (20E-35E) portion of the ITF was located at 12.8N, which was south of the climatological position centered at 13.9N and displaced 2.2 degrees further south than the previous dekad. Despite the location, above normal rainfall persisted in eastern Sudan and Ethiopia. Figure 1 shows the current position of the ITF relative to the long-term average position during the 1st dekad of October and its previous position during the 3rd dekad of September. Figures 2 and 3 are time series, illustrating the latitudinal values of the western and eastern portions of the ITF, respectively, and their seasonal evolutions since the beginning of April, 2021.

Current vs. Normal Dekadal ITF Position  
and RFE Accumulated Precipitation (mm)  
October 2021, Dekad 1



Mean Western Portion of the ITF: Averaged 10W to 10E  
As of: October 2021, Dekad 1



Mean Eastern Portion of the ITF: Averaged 20E to 35E  
As of: October 2021, Dekad 1

