



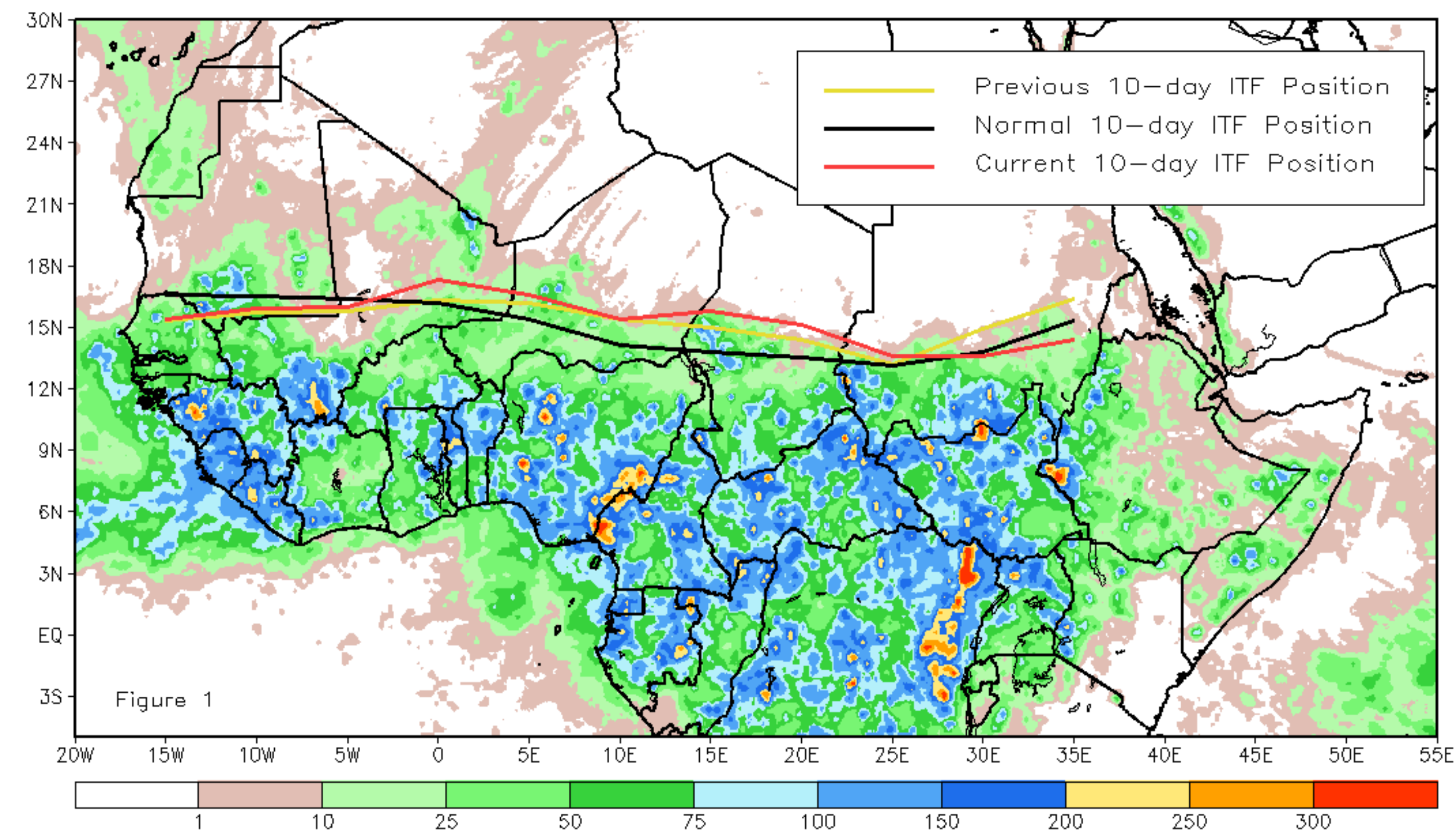
CPC Africa Desk InterTropical (ITF) Front Analysis

October 2020, Dekad 1

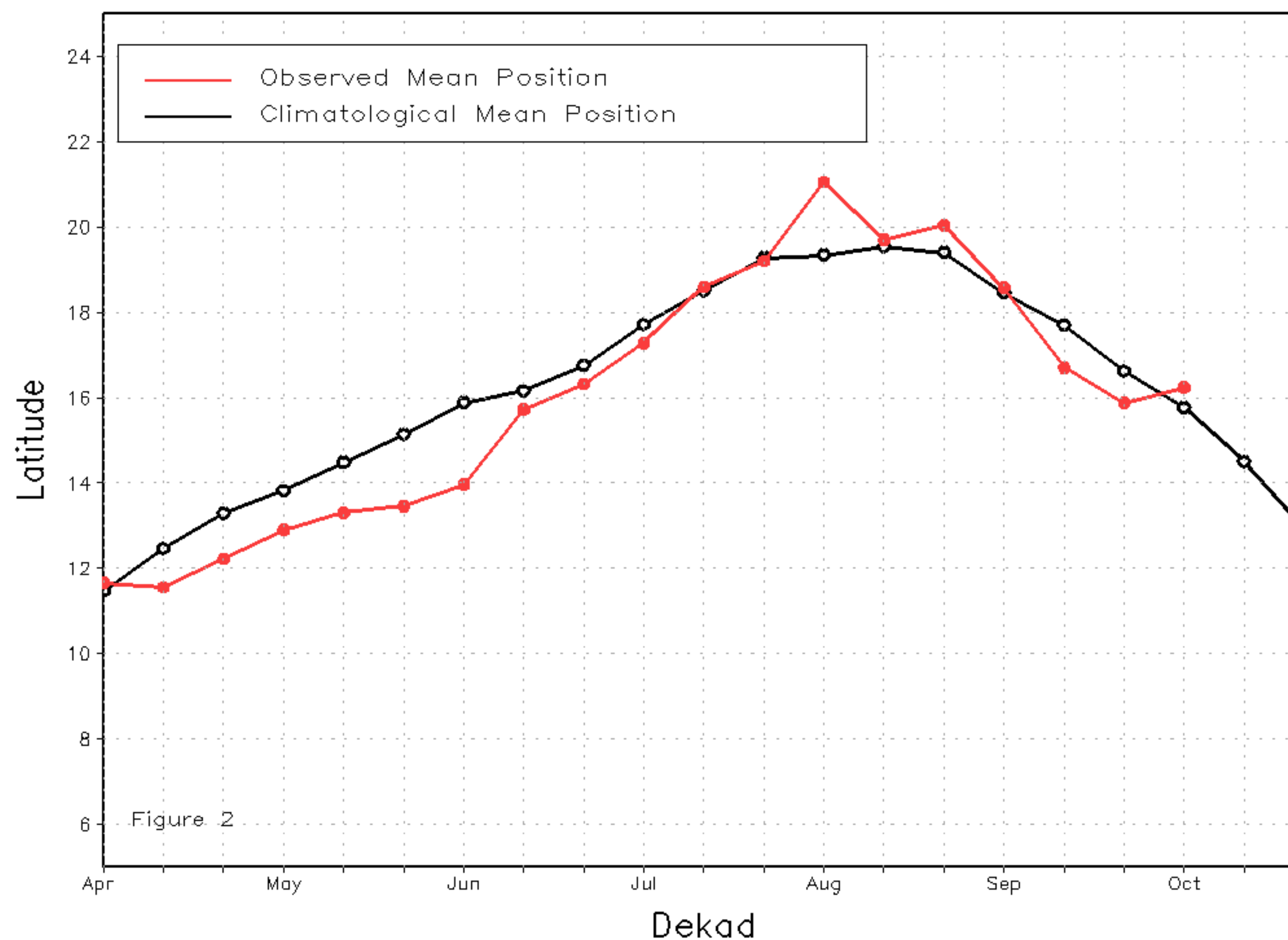
Discussion:

From October 1-10, the ITF moved only slightly compared to the previous dekad. The western portion, between 15W-5E regressed northward compared to the previous dekad. This corresponds to some abnormal rainfall across the Sahel. In contrast, the eastern part (between 25E-35E) moved southward by 0.5 degrees from its position the previous dekad, but is still north of its climatological average. This can help explain some lingering heavy rainfall in Sudan and South Sudan. The mean eastern (20E-35E) portion of the ITF was located at 14.2N, which was slightly north of the mean position by 0.3 degrees. The mean western (10W-10E) portion of the ITF was located at 16.2, which was located to the north of the mean position by 0.5 degrees. Figure 1 shows the current position of the ITF relative to the climatological position during the 1st dekad of October and its previous position during the 3rd dekad of September. Figures 2 and 3 are time series, illustrating the latitudinal values of the western and eastern portions of the ITF, respectively, and their seasonal evolutions since April, 2020.

Current vs. Normal Dekadal ITF Position
and RFE Accumulated Precipitation (mm)
October 2020, Dekad 1



Mean Western Portion of the ITF: Averaged 10W to 10E
As of: October 2020, Dekad 1



Mean Eastern Portion of the ITF: Averaged 20E to 35E
As of: October 2020, Dekad 1

