



CPC Africa Desk InterTropical (ITF) Front Analysis

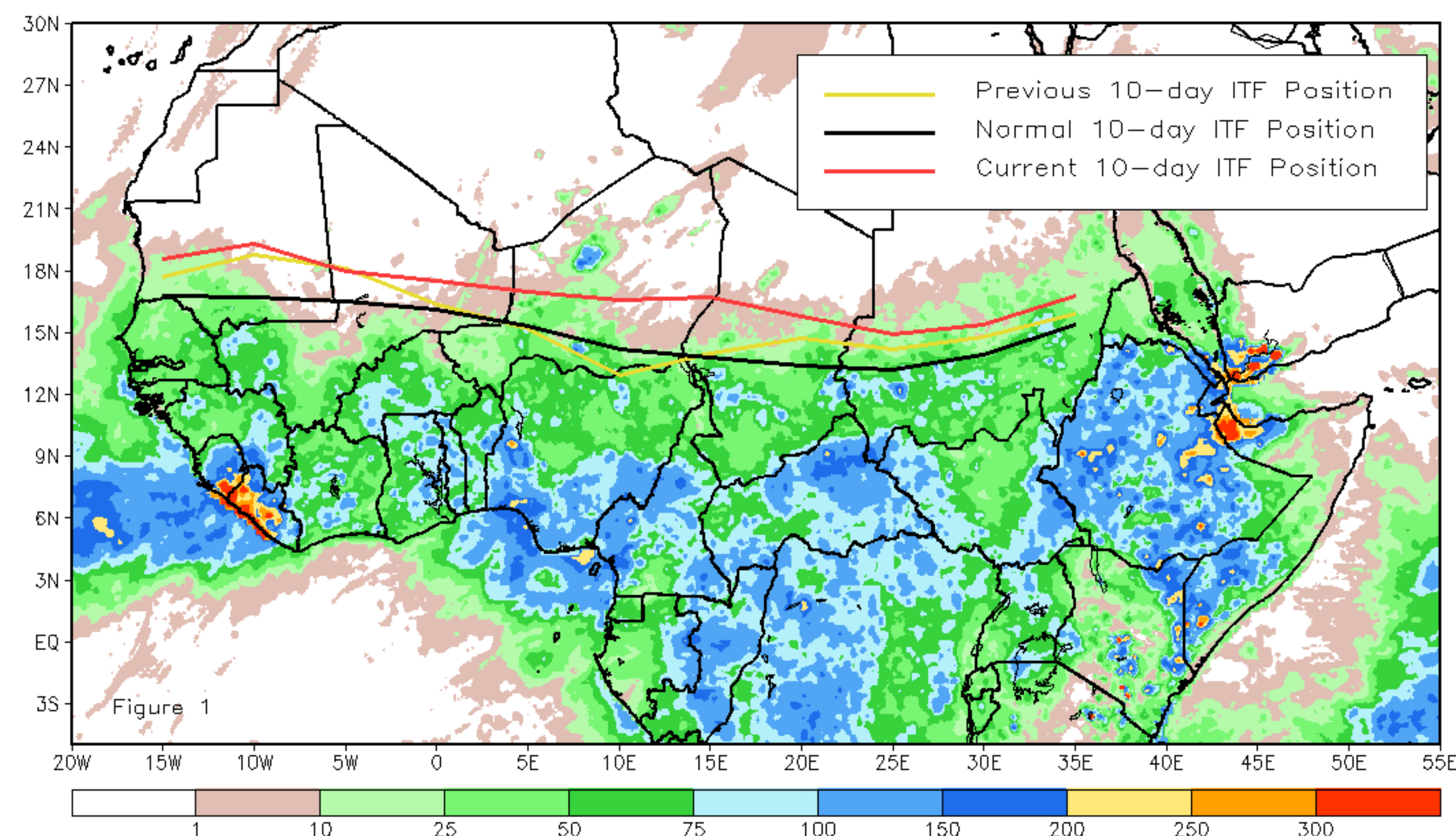
October 2019, Dekad 1

Discussion:

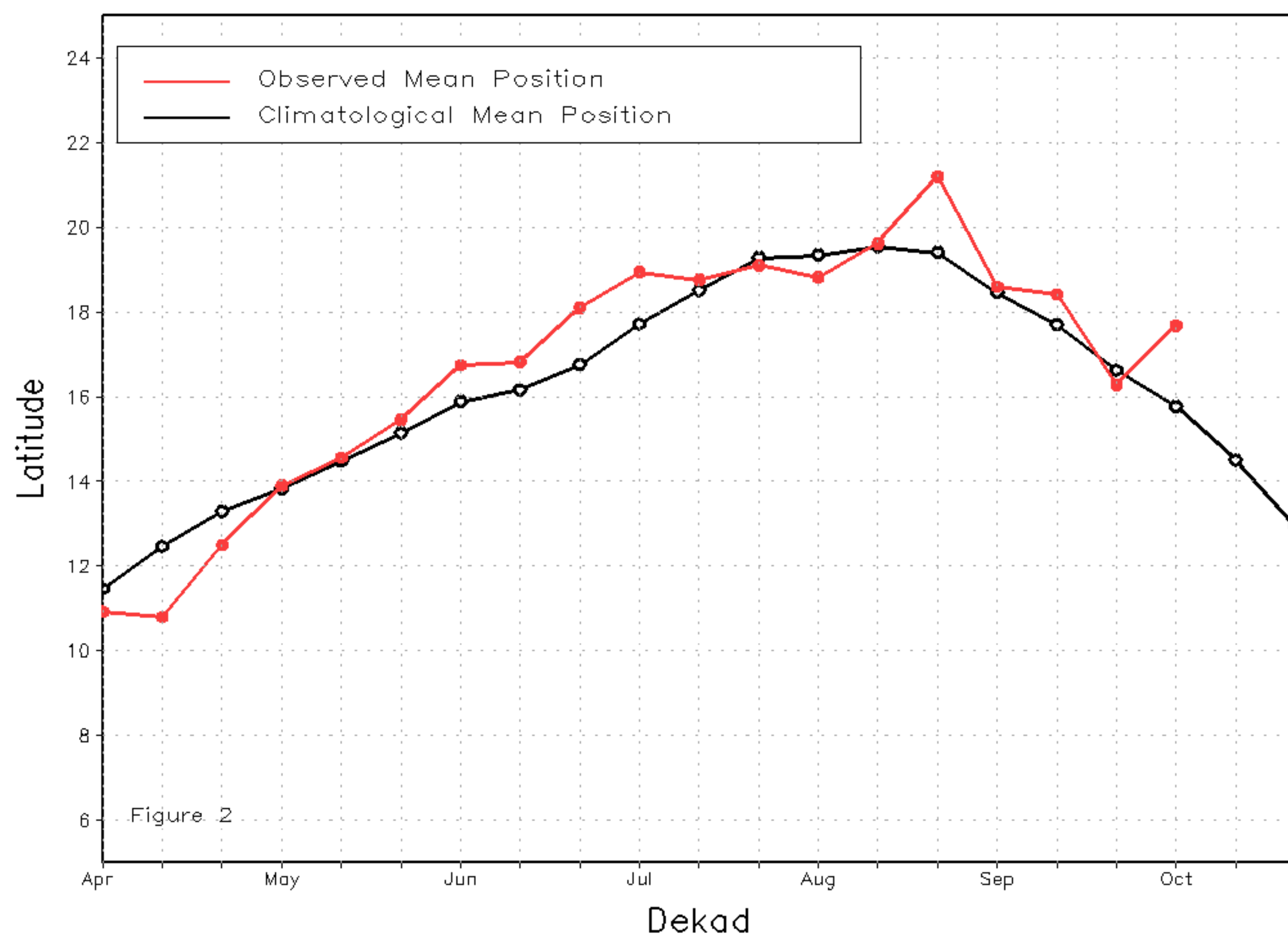
From October 1-10, the entirety ITF was located well north of its climatological mean position, and had atypically moved northward since the previous dekad. The mean position of the western portion of the ITF between 10W-10E is approximated at 17.7 degrees N, which represents a northward shift of 1.4 degrees compared to the previous dekad. A late-season increase in rainfall over Senegal, Mauritania, and Niger was associated with this abnormal shift. The mean position of the eastern portion of the ITF between 20E-35E is 15.7 degrees N, which represents a northward shift of nearly 0.8 degrees compared to the previous dekad. This puts the ITF location above the average position of 14.0 degrees N. The unusually far northward extent of this portion of the ITF is associated with well-above normal rainfall over Sudan, Ethiopia, and Eritrea. Figure 1 shows the current position of the ITF relative to the long-term average position during the 1st dekad of October and its previous position during the 3rd dekad of September. Figures 2 and 3 are time series, illustrating the latitudinal values of the western and eastern portions of the ITF, respectively, and their seasonal evolutions since April, 2019.

Current vs. Normal Dekadal ITF Position
and RFE Accumulated Precipitation (mm)

October 2019, Dekad 1



Mean Western Portion of the ITF: Averaged 10W to 10E
As of: October 2019, Dekad 1



Mean Eastern Portion of the ITF: Averaged 20E to 35E
As of: October 2019, Dekad 1

