



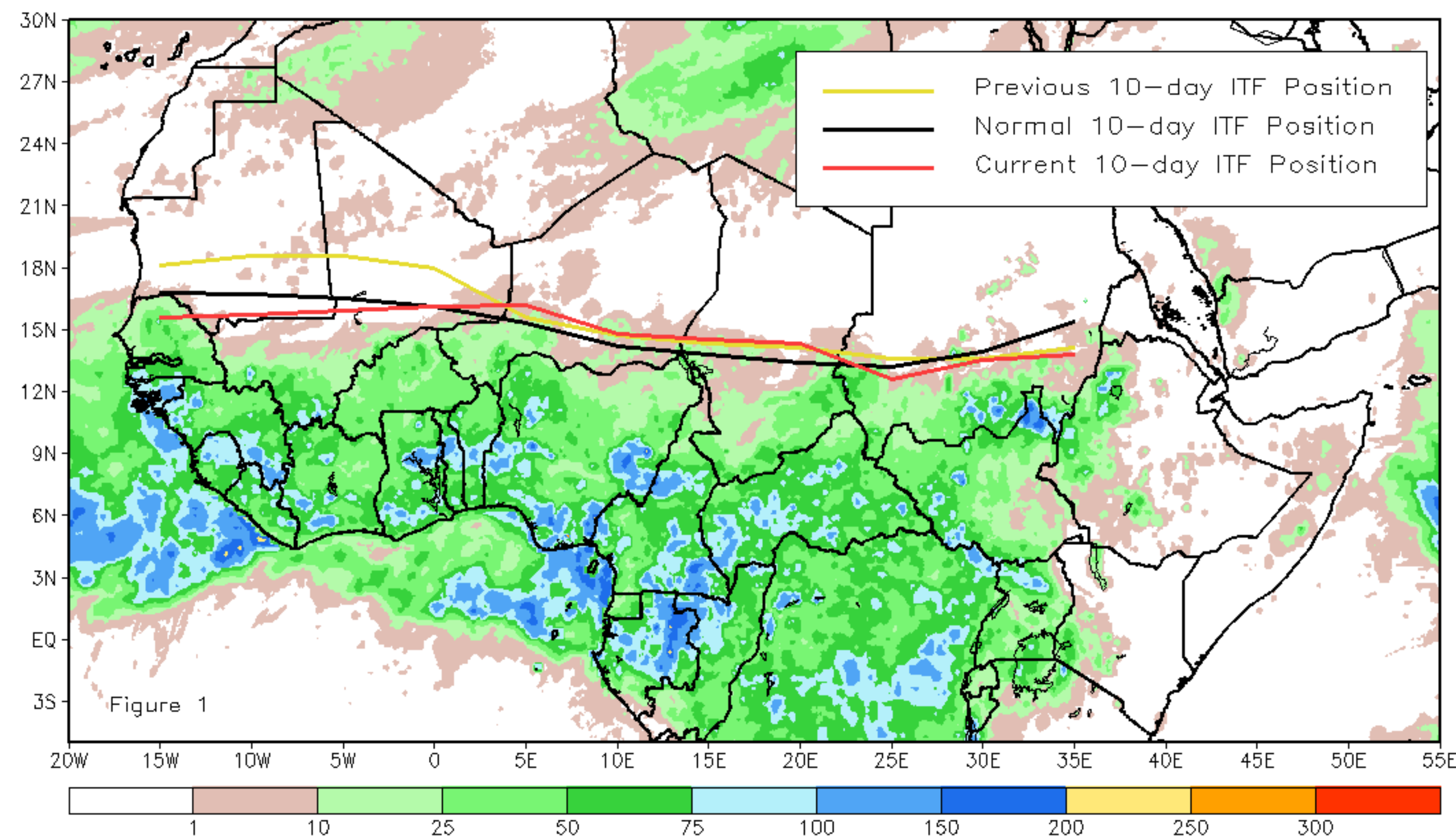
# CPC Africa Desk InterTropical (ITF) Front Analysis

## October 2018, Dekad 1

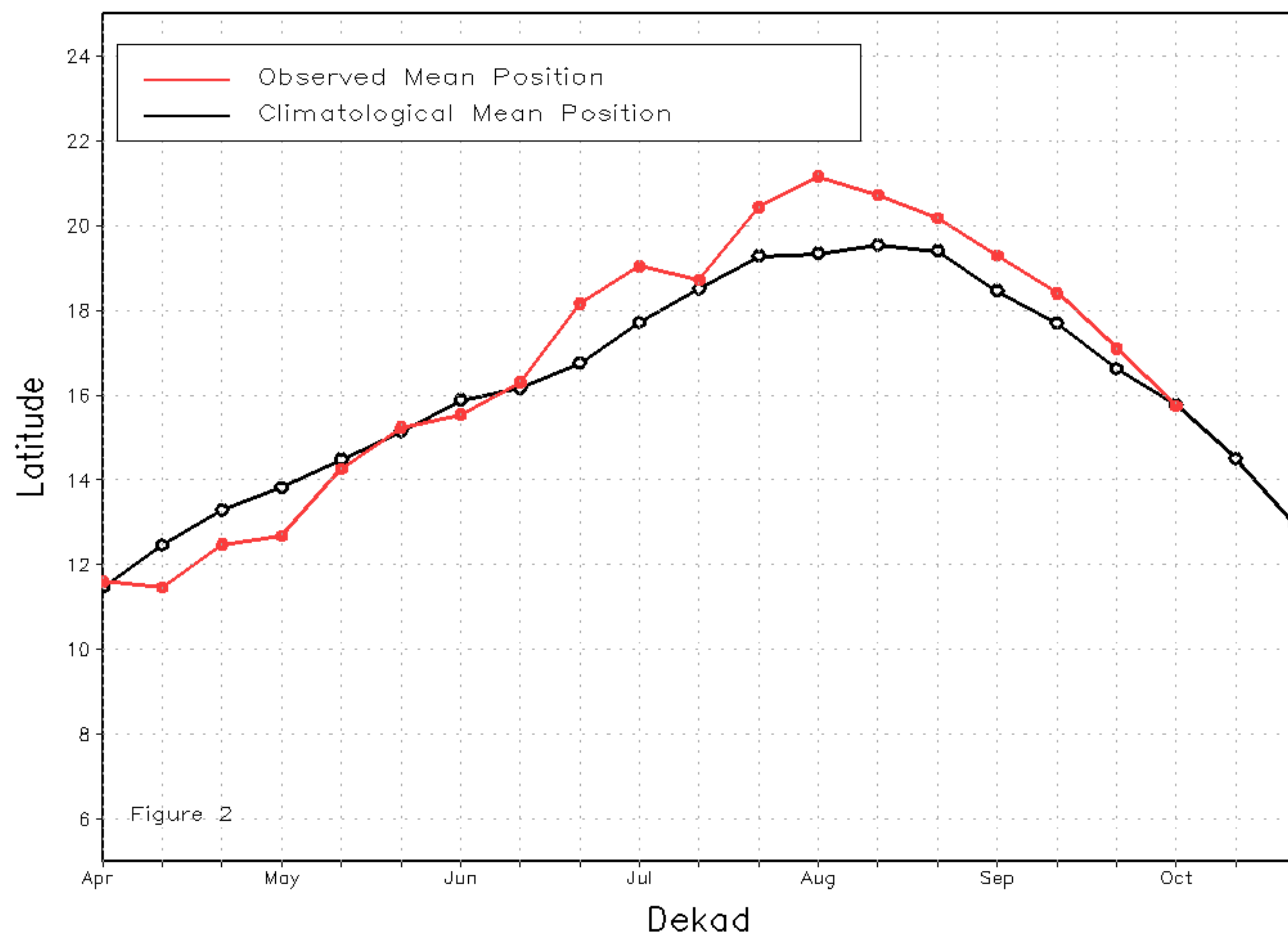
### Discussion:

From October 1-10, the ITF generally continued its equatorward retreat and has now dropped below its average position in far West Africa. The mean western (10W-10E) portion of the ITF was approximated at 15.7N, a substantial drop of 1.4 degrees. The ITF marks the first such negative displacement in 12 dekads. Even so, moisture has remained plentiful over Senegal leading to ample late-season rainfall. The mean eastern (20E-35E) portion of the ITF was approximated at 13.6N, 0.3 degrees to the south of the previous dekad. The eastern ITF position for early October fell below the normal position by nearly 0.4 degrees and marked the 3rd consecutive dekad that was below normal. Figure 1 shows the current position of the ITF compared to the climatological position during the 1st dekad of October, and its previous position during the 3rd dekad of September. Figures 2 and 3 are time series, illustrating the latitudinal values of the western and eastern portions of the ITF, respectively, and their seasonal evolutions since April, 2018.

Current vs. Normal Dekadal ITF Position  
and RFE Accumulated Precipitation (mm)  
October 2018, Dekad 1



Mean Western Portion of the ITF: Averaged 10W to 10E  
As of: October 2018, Dekad 1



Mean Eastern Portion of the ITF: Averaged 20E to 35E  
As of: October 2018, Dekad 1

