



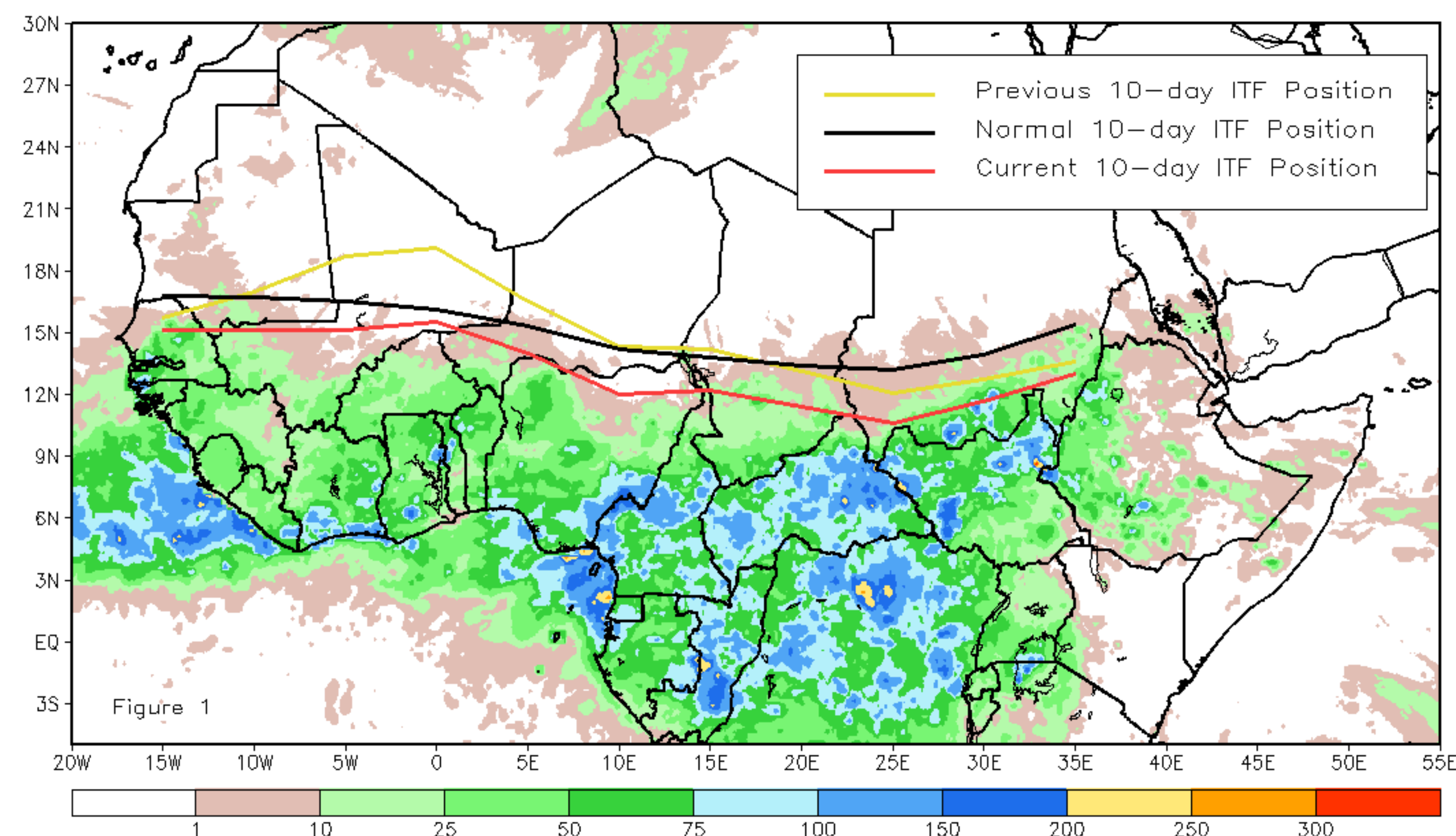
CPC Africa Desk InterTropical (ITF) Front Analysis

October 2017, Dekad 1

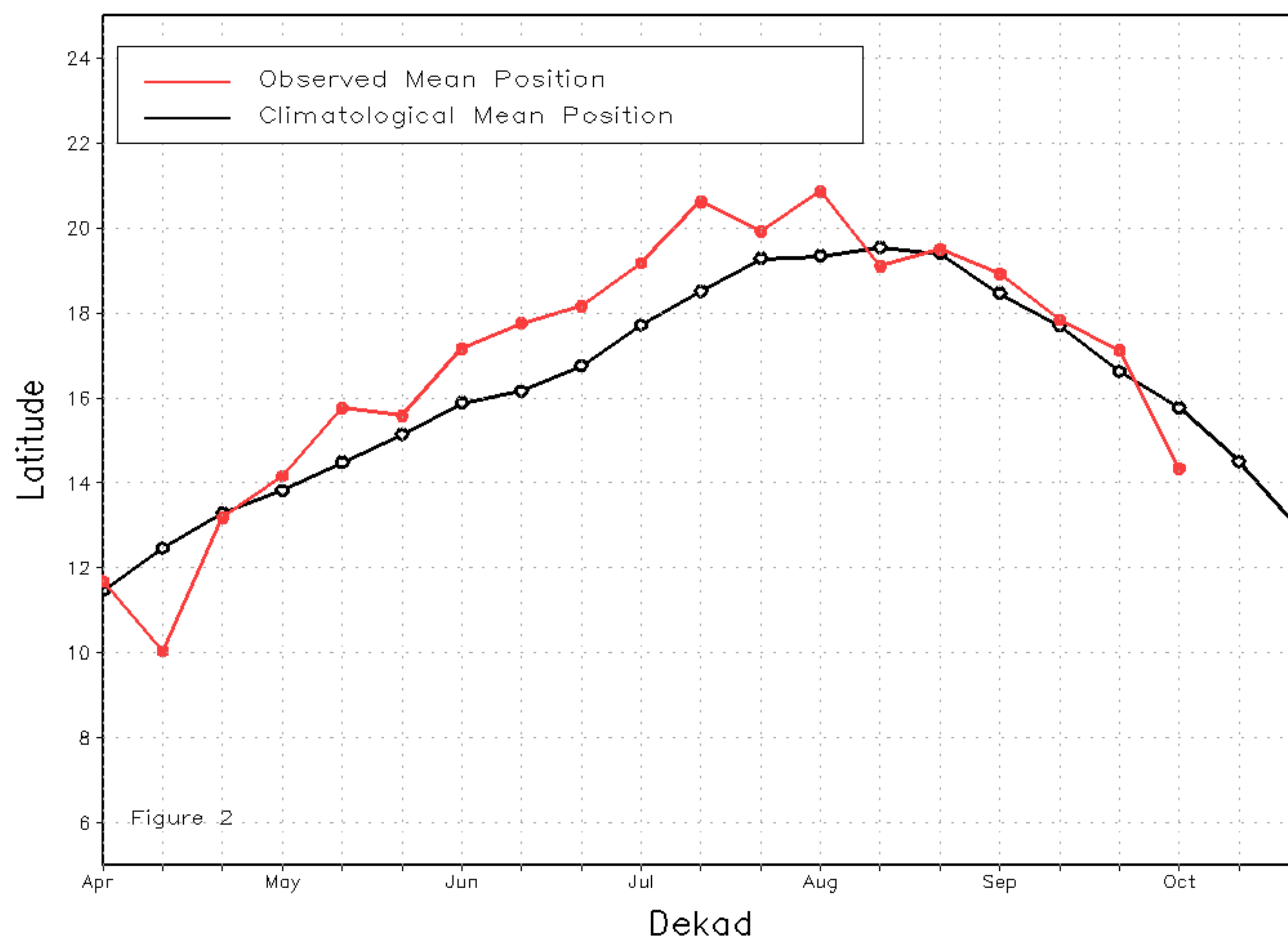
Discussion:

From October 1-10, the ITF continues its equatorward retreat and is everywhere located south of its climatological position. The mean western (10W-10E) portion of the ITF was approximated at 14.3 degrees N and was south of the mean climatological position by 1.5 degrees. This was a large shift of 2.8 degrees. In concurrence with the early ITF retreat, rains have become generally lesser than normal to start the month. The mean eastern (20E-35E) portion of the ITF was approximated at 11.7 degrees N and was well to the south of the average position by 2.3 degrees. Despite the anomalously south position of the ITF, above-average rainfall was still observed in parts of Sudan and South Sudan. Figure 1 shows the current position of the ITF relative to its climatological position during the 1st dekad of October and its previous position during the 3rd dekad of September. Figures 2 and 3 are time series, illustrating the mean latitudinal values of the western and eastern portion of the ITF, respectively, and their evolutions since April, 2017.

Current vs. Normal Dekadal ITF Position
and RFE Accumulated Precipitation (mm)
October 2017, Dekad 1



Mean Western Portion of the ITF: Averaged 10W to 10E
As of: October 2017, Dekad 1



Mean Eastern Portion of the ITF: Averaged 20E to 35E
As of: October 2017, Dekad 1

