



CPC Africa Desk InterTropical (ITF) Front Analysis

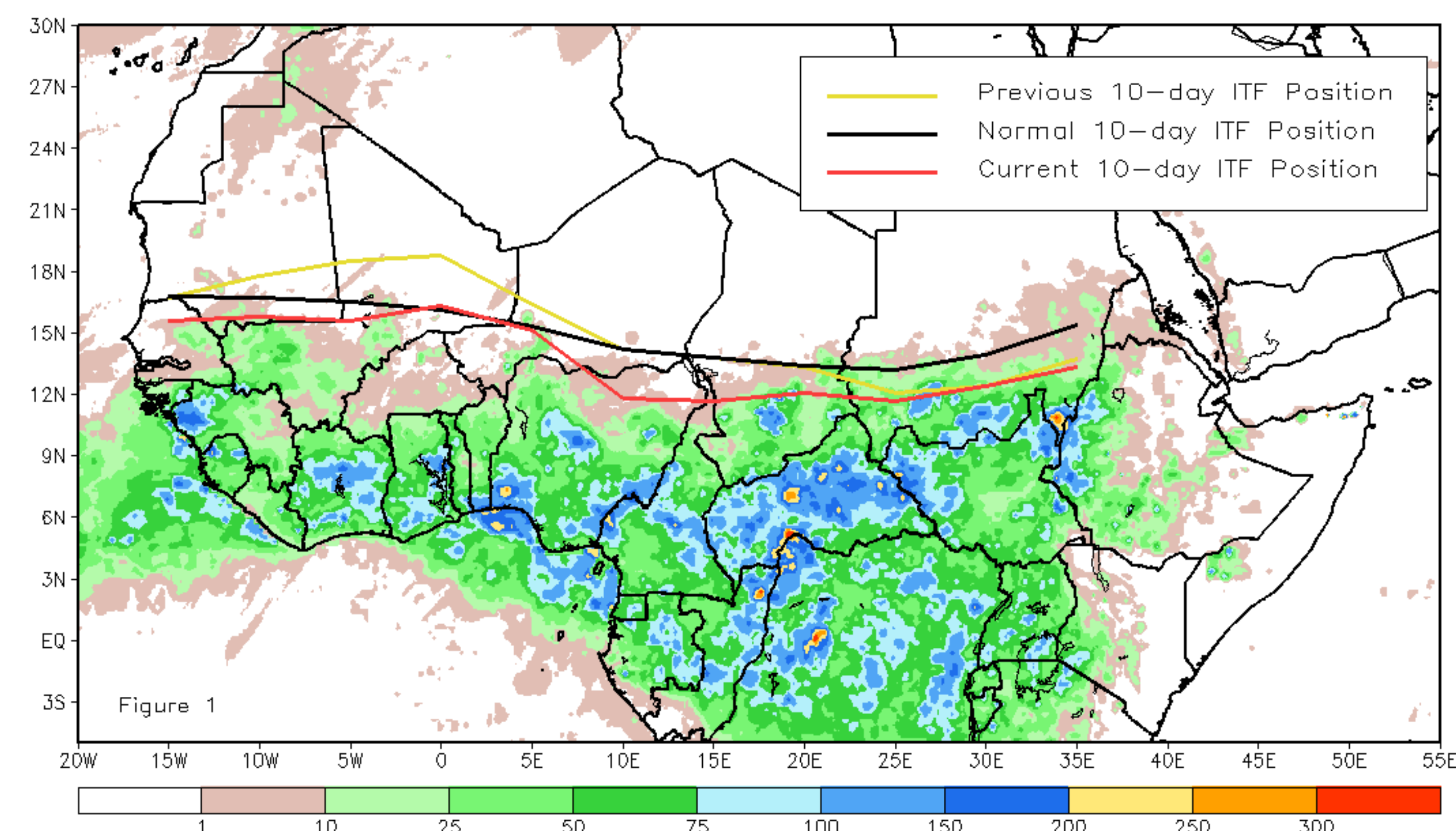
October 2016, Dekad 1

Discussion:

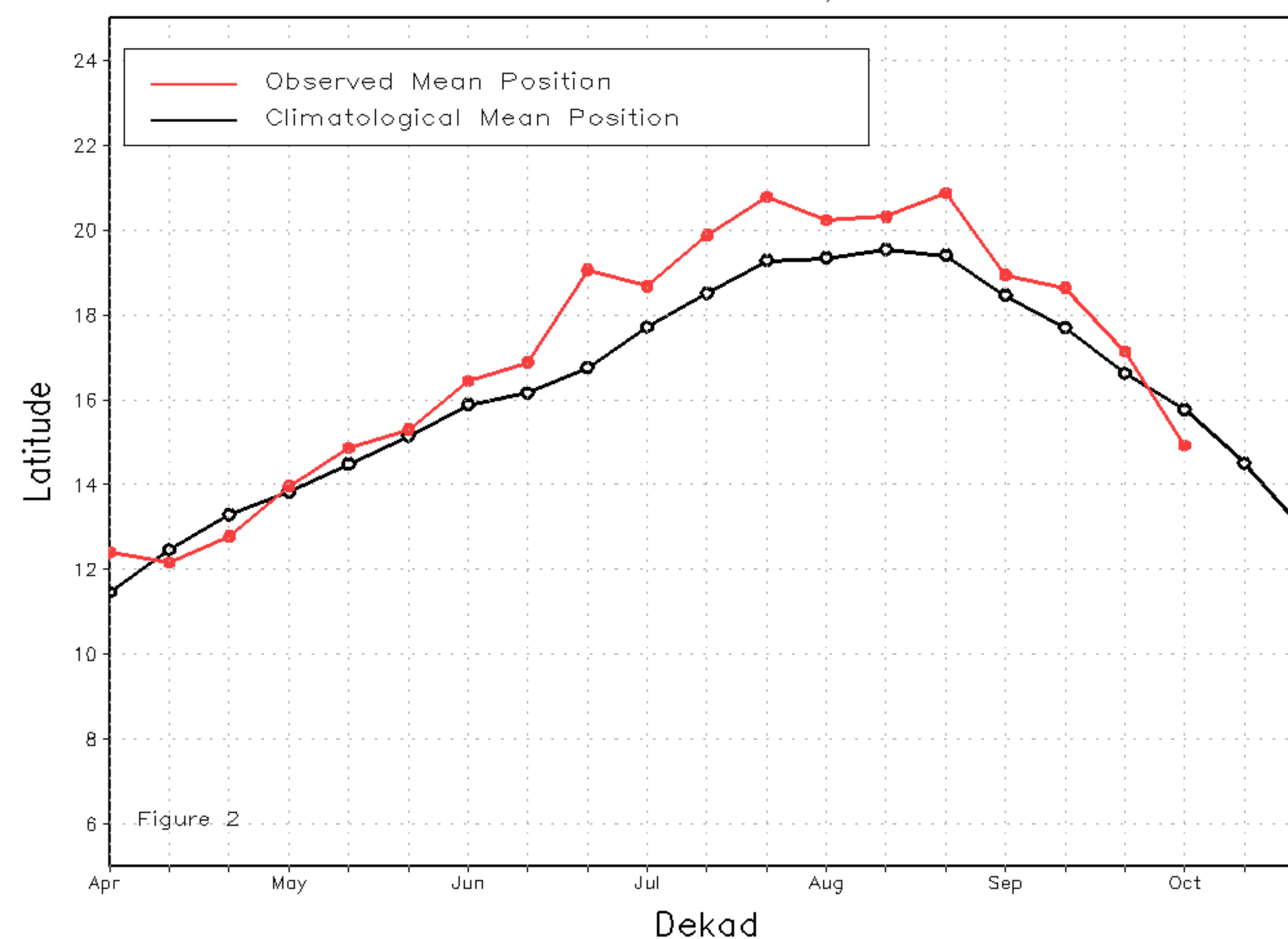
From October 1-10, the ITF continued its equatorward retreat. It is now located at or south of its climatological average position through its entire length. From 10W-10E, the mean western position of the ITF was located at approximately 14.9N, well south of its previous mean position (17.1N) during the last dekad of September. The mean position was almost 1 degree south of the climatological normal position (15.8N) for early October. This is the first mean position south of climatology since April for the western ITF. From 20E-35E, the mean eastern position of the ITF was located at approximately 12.4N, and was well below the climatological normal position (14.0N), making for 7 consecutive dekads below normal dating back to early August. Figure 1 shows the current position of the ITF relative to its climatological normal position during the 1st dekad of October, and its previous location during the 3rd dekad of September. Figures 2 and 3 are time series, illustrating the mean latitudinal values of the western and eastern portions of the ITF, respectively, and their evolutions since April, 2016.

Current vs. Normal Dekadal ITF Position
and RFE Accumulated Precipitation (mm)

October 2016, Dekad 1



Mean Western Portion of the ITF: Averaged 10W to 10E
As of: October 2016, Dekad 1



Mean Eastern Portion of the ITF: Averaged 20E to 35E
As of: October 2016, Dekad 1

