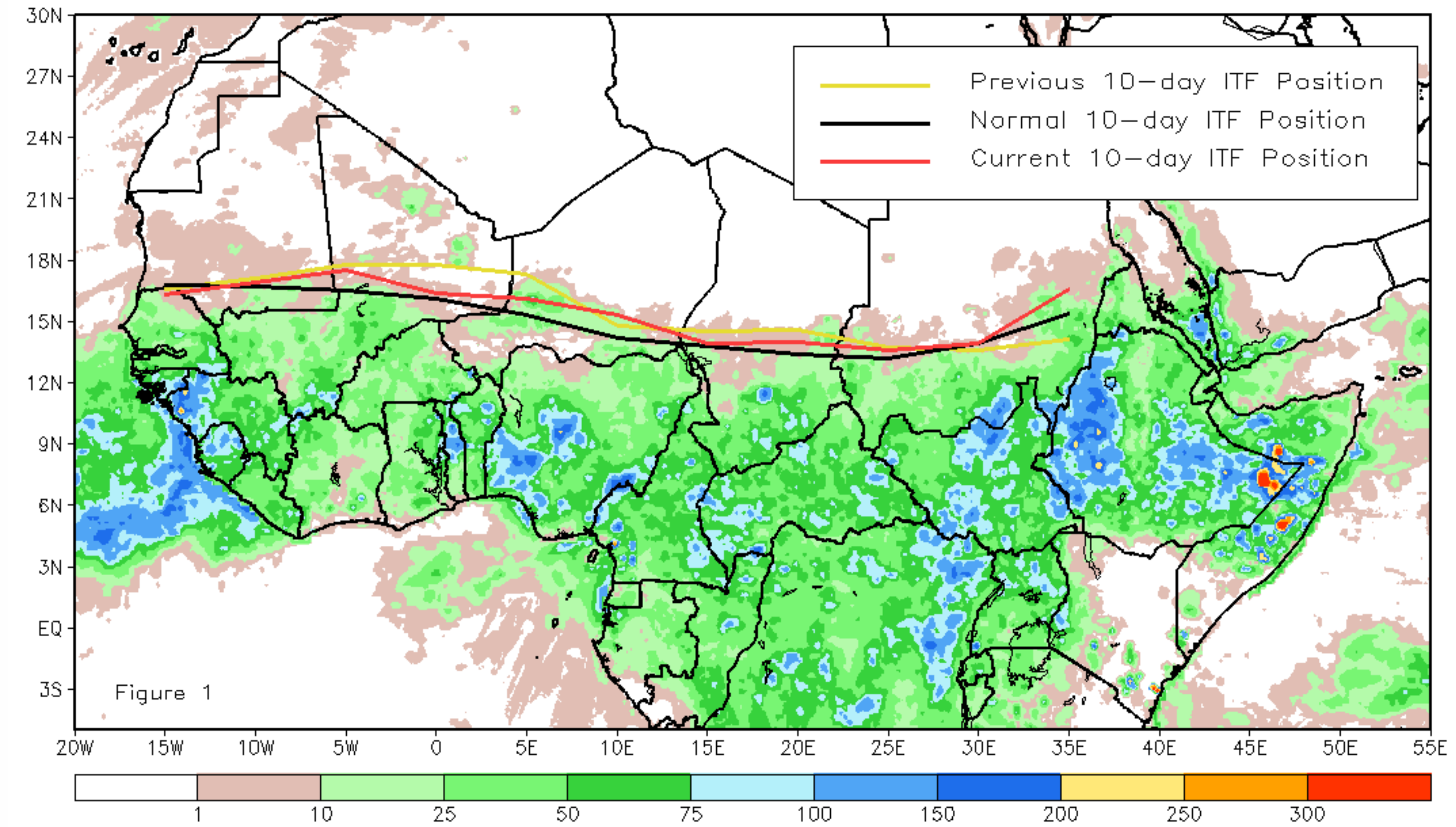


CPC Africa Desk InterTropical (ITF) Front Analysis October 2014, Dekad 1

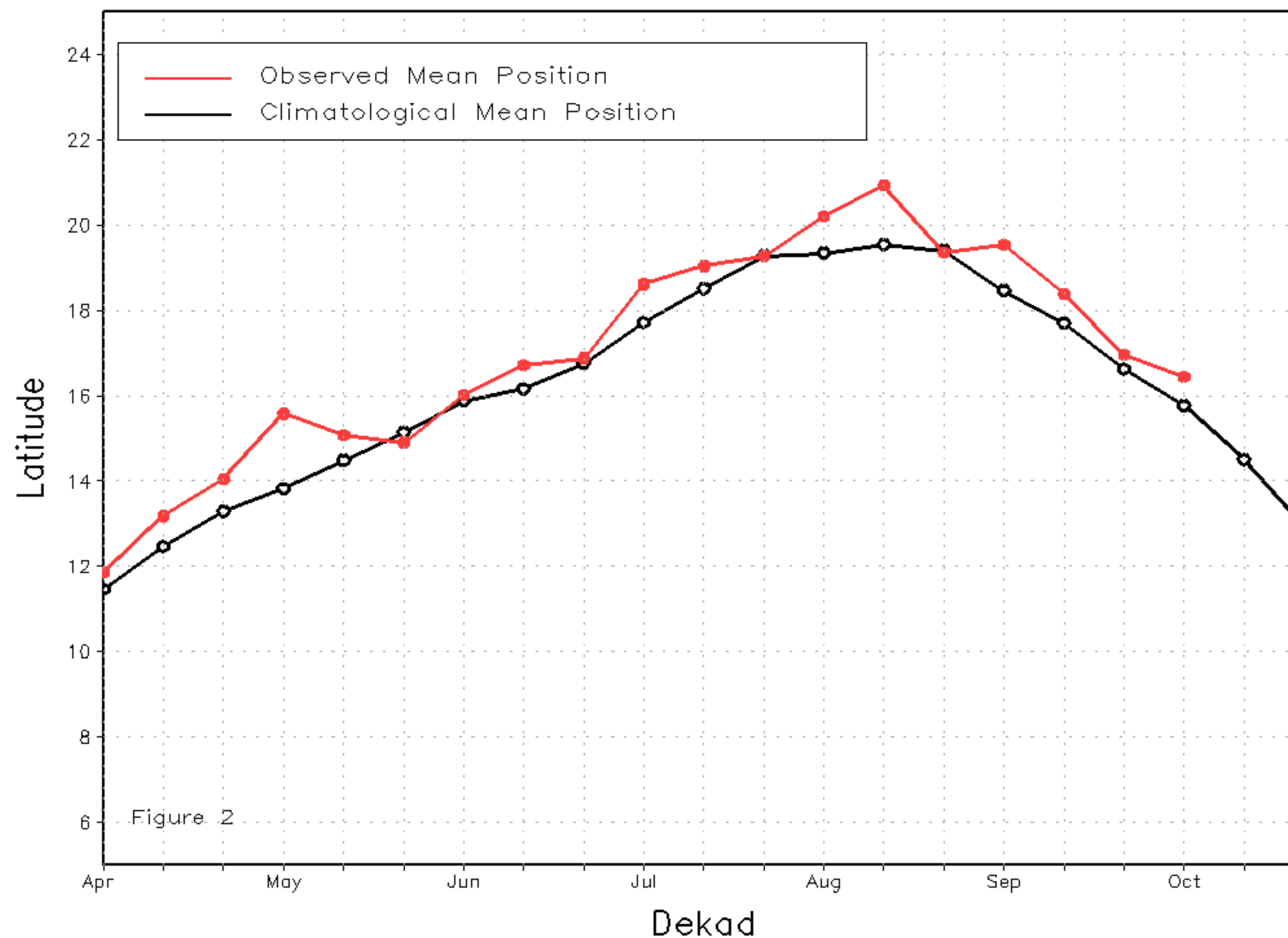
Discussion:

From October 1-10, 2014, the ITF remained nearly stationary relative to its position during the previous period and thus positioned itself slightly to the north of the climatology. This anomalous position was partially attributed to continued vigorous southerly winds across portions of West Africa and Eastern Africa. The mean western (10W-10E) portion of the ITF was approximated at 16.4N, which was to the north of the average position by 0.8 degree. As a result, above-average rainfall was observed across much of the Sahel, including central Mali and central Niger. To the east, the mean eastern (20E-35E) was located at 14.5N, which was also to the north of the long-term average position by 0.5 degree. This brought above-average rainfall across much of southern and eastern Sudan. Figure 1 shows the current ITF position relative to the long-term average position for the first dekad of October, and its previous position during the third dekad of September. Figures 2 and 3 are time series illustrating the mean latitudinal values of the western and eastern portions of the ITF, respectively, and their evolutions since April, 2014.

Current vs. Normal Dekadal ITF Position
and RFE Accumulated Precipitation (mm)
October 2014, Dekad 1



Mean Western Portion of the ITF: Averaged 10W to 10E
As of: October 2014, Dekad 1



Mean Eastern Portion of the ITF: Averaged 20E to 35E
As of: October 2014, Dekad 1

