



CPC Africa Desk InterTropical (ITF) Front Analysis

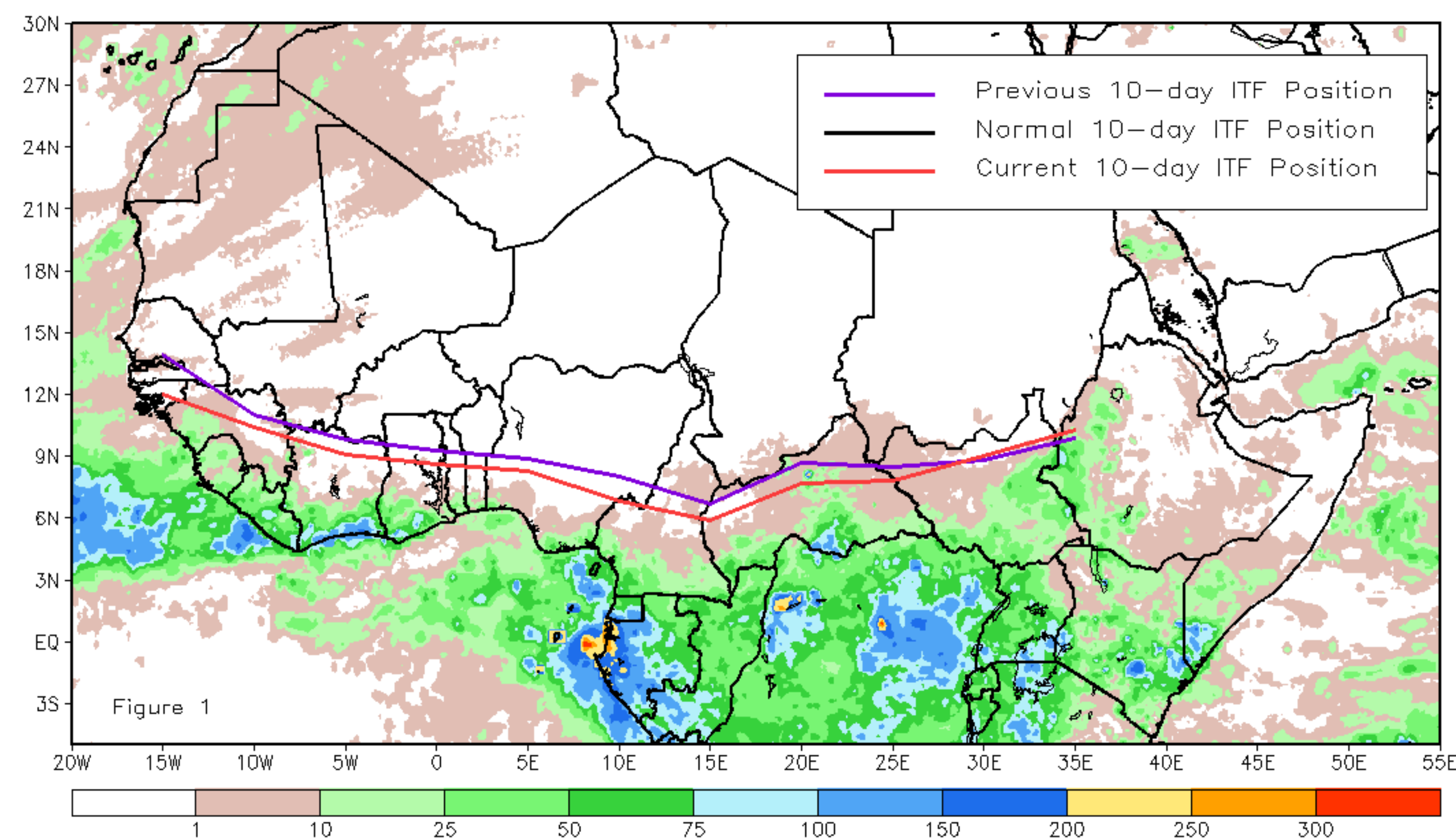
November 2024, Dekad 2

Discussion:

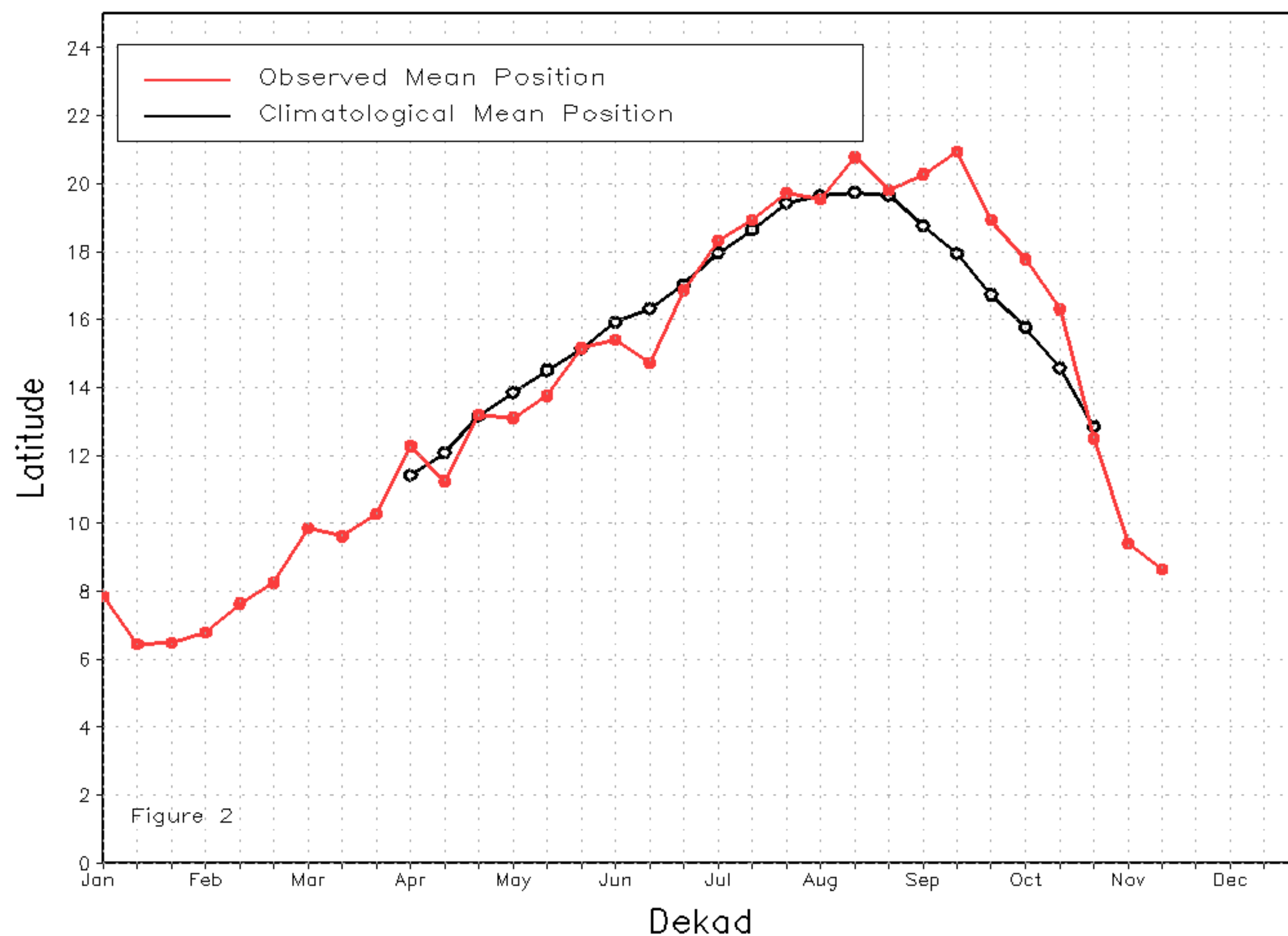
From November 11-20, the Inter-Tropical Front (ITF) moved southward along most of its length compared to its previous position, except at South Sudan, where it moved northward. Specifically, the current ITF was located at approximately 8.6N in the western portion, which is south of its previous position at 9.4N. In the eastern part, the current location of the ITF is around 8.7N compared to 9.0N in the previous position. The decline in the position of the ITF may have contributed to recent heavy rainfall in Central Africa. Figure 1 displays the current position of the ITF during the 2nd dekad of November and its previous position during the 1st dekad of November. Figures 2 and 3 are time series, illustrating the latitudinal positions for the western and eastern portions of the ITF, respectively, and their seasonal evolutions since the beginning of April 2024.

Current vs. Normal Dekadal ITF Position
and RFE Accumulated Precipitation (mm)

November 2024, Dekad 2



Mean Western Portion of the ITF: Averaged 10W to 10E
As of: November 2024, Dekad 2



Mean Eastern Portion of the ITF: Averaged 20E to 35E
As of: November 2024, Dekad 2

