



# CPC Africa Desk InterTropical (ITF) Front Analysis

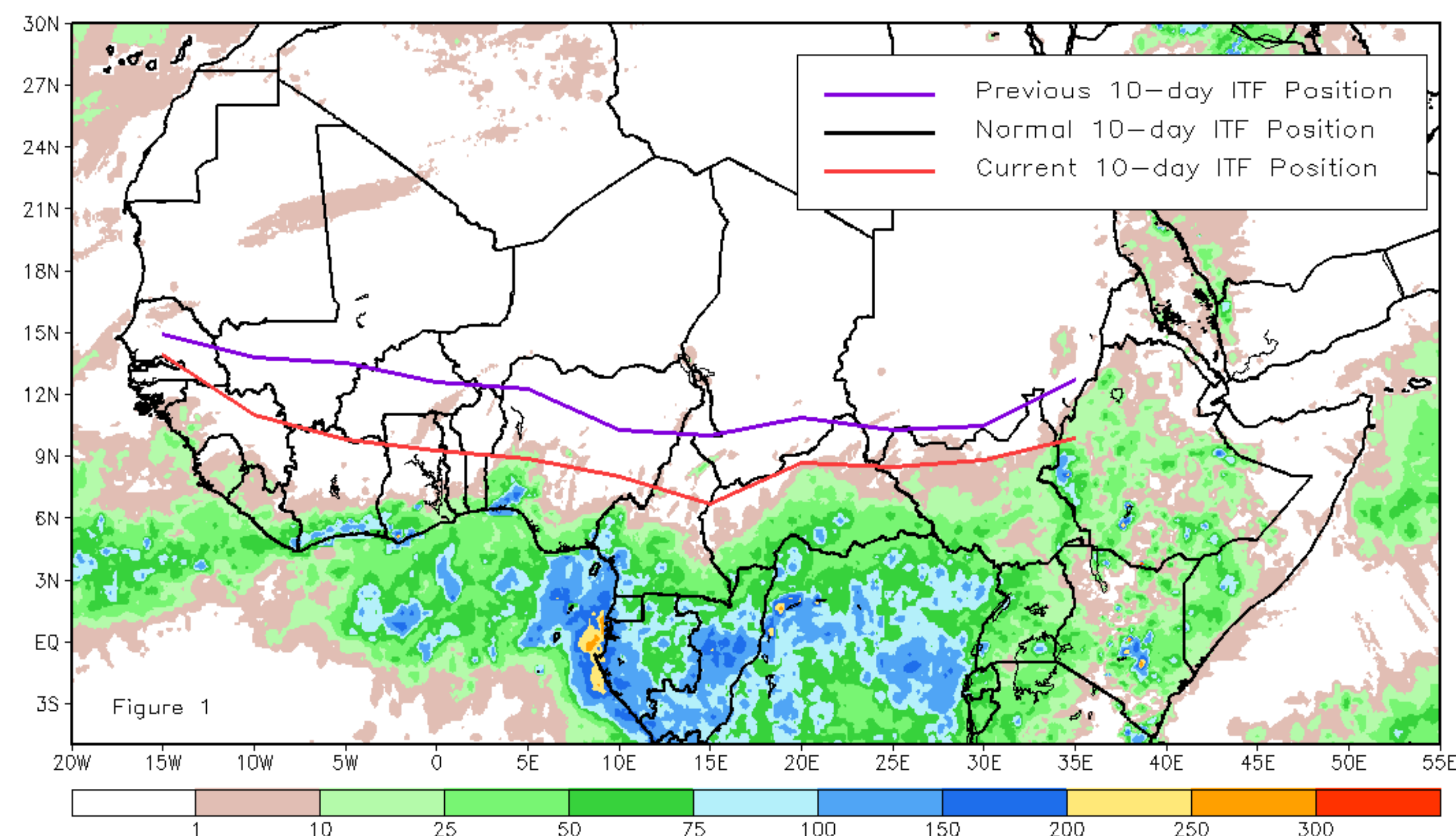
## November 2024, Dekad 1

### Discussion:

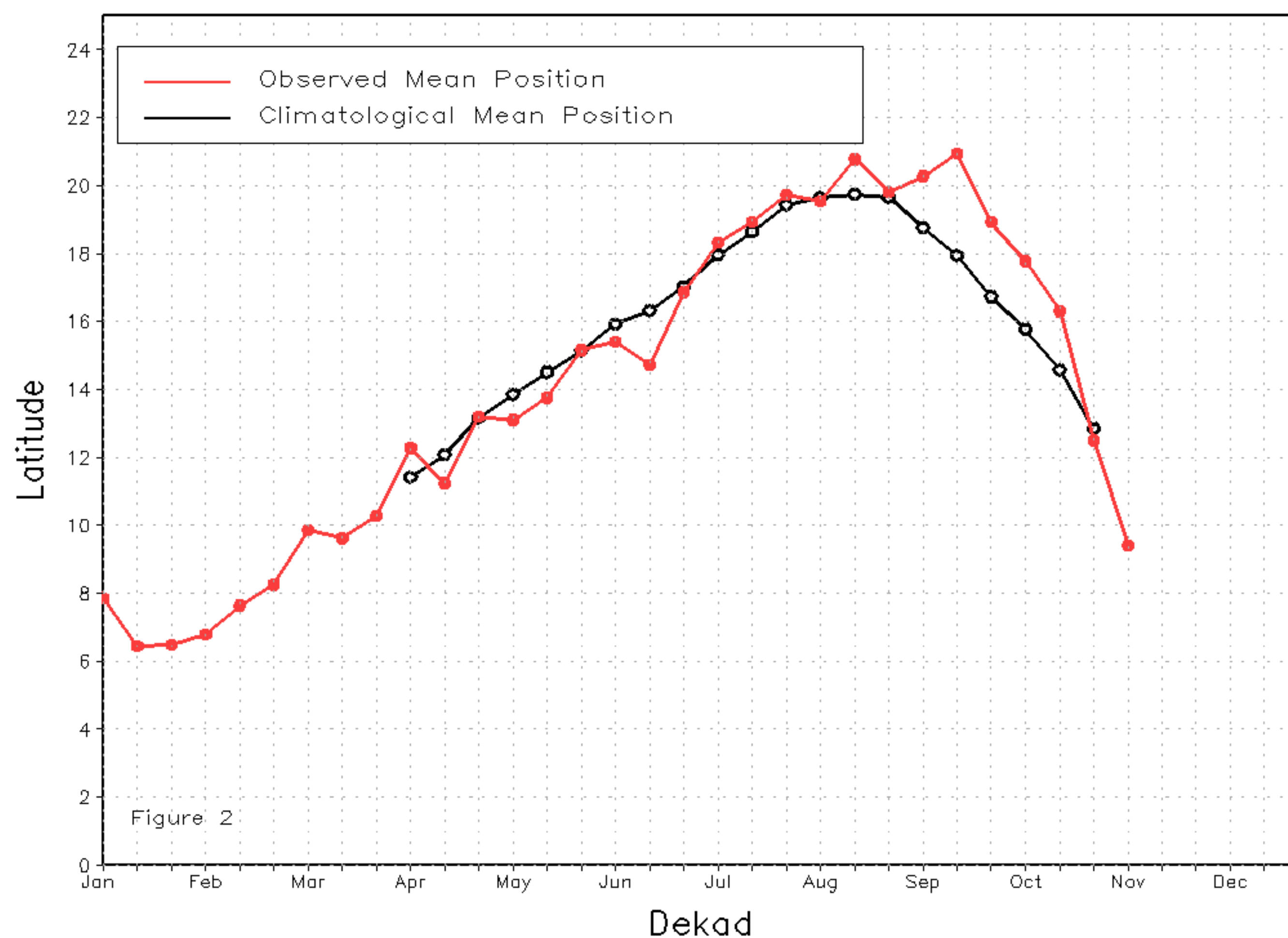
From November 1-10, the Inter-Tropical Front (ITF) moved southward along its entire length compared to its previous position. Specifically, the current ITF was located at approximately 9.4N in the western portion, which is south of its previous position at 12.5N. In the eastern part, the current location of the ITF is around 9.0N compared to 11.1N in the previous position. Evidence suggests that this decline in the position of the ITF may have contributed to the recent heavy rainfall over Central Africa. Figure 1 displays the current position of the ITF during the 1st dekad of November and its previous position during the 3rd dekad of October. Figures 2 and 3 are time series, illustrating the latitudinal positions for the western and eastern portions of the ITF, respectively, and their seasonal evolutions since the beginning of April 2024.

Current vs. Normal Dekadal ITF Position  
and RFE Accumulated Precipitation (mm)

November 2024, Dekad 1



Mean Western Portion of the ITF: Averaged 10W to 10E  
As of: November 2024, Dekad 1



Mean Eastern Portion of the ITF: Averaged 20E to 35E  
As of: November 2024, Dekad 1

