



# CPC Africa Desk InterTropical (ITF) Front Analysis

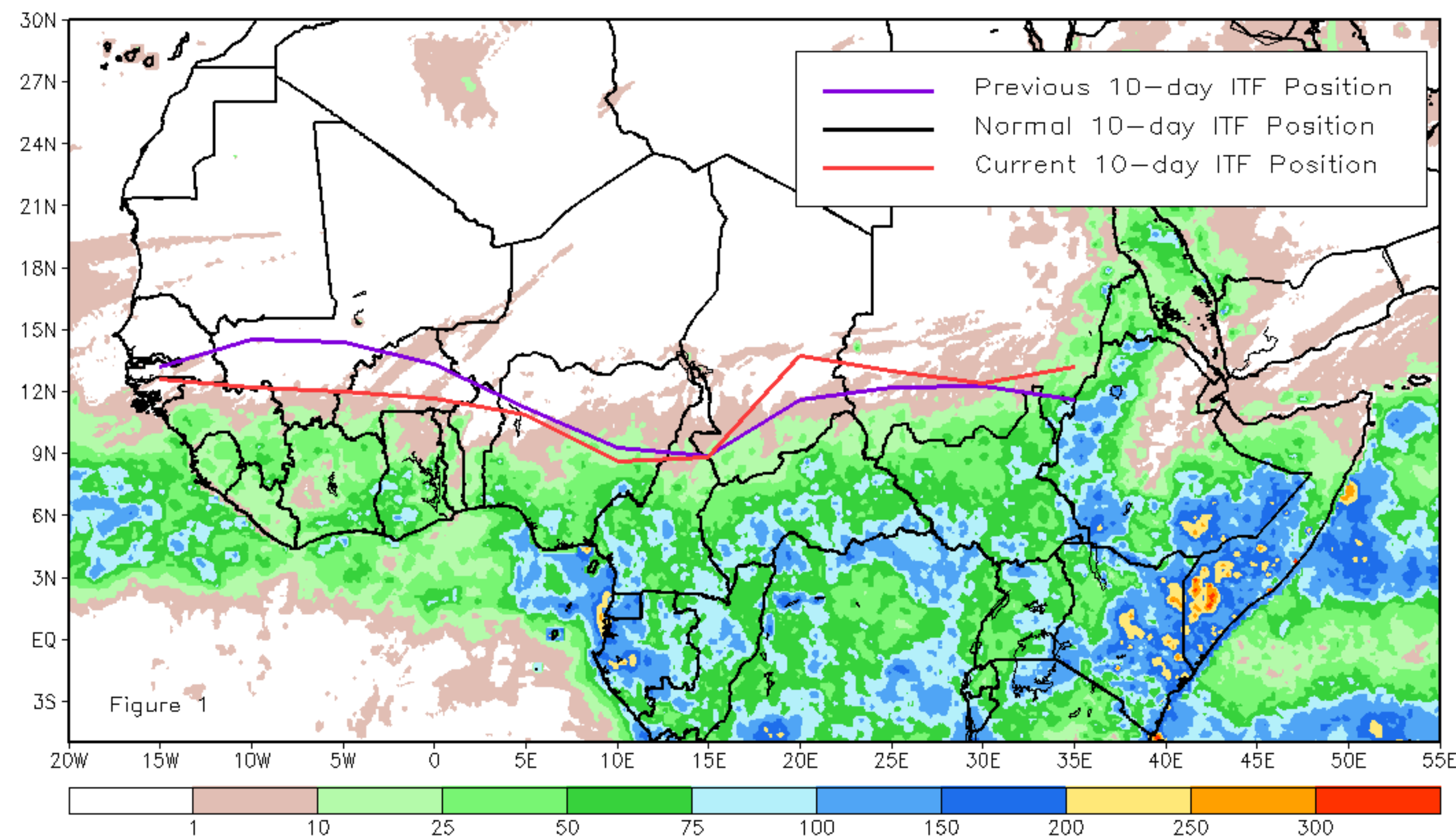
## November 2023, Dekad 1

### Discussion:

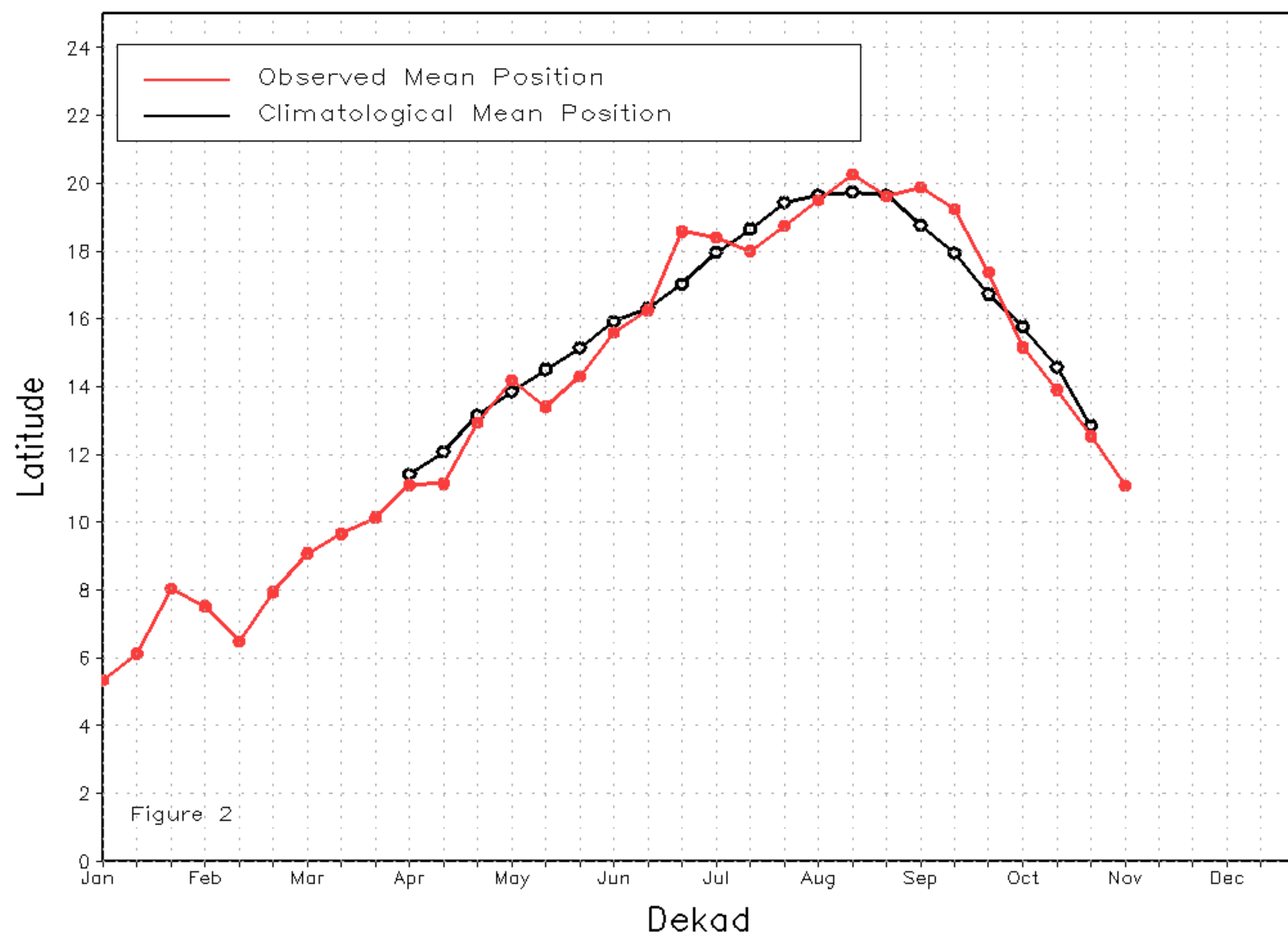
Between 1-10 November, the Inter-Tropical Front (ITF) moved south in the western portion (10W-10E) from its previous position. Meanwhile, in the eastern portion (20E-35E), the current ITF moved north compared to its previous position. Specifically, the current ITF was located at approximately 11.1N in the western portion, which is slightly south of its previous position at 12.5N. In the eastern part, the current ITF location is around 13.1N compared to 11.9N in the previous position. Based on the available evidence, it is likely that the rise in the ITF position in the eastern portion has played a role in the recent heavy rainfall over Central and Eastern Africa. Figure 1 displays the current position of the ITF during the 1st dekad of November and its previous position during the 3rd dekad of October. Figures 2 and 3 are time series, illustrating the latitudinal positions for the western and eastern portions of the ITF, respectively, and their seasonal evolutions since the beginning of April 2023.

Current vs. Normal Dekadal ITF Position  
and RFE Accumulated Precipitation (mm)

November 2023, Dekad 1



Mean Western Portion of the ITF: Averaged 10W to 10E  
As of: November 2023, Dekad 1



Mean Eastern Portion of the ITF: Averaged 20E to 35E  
As of: November 2023, Dekad 1

