



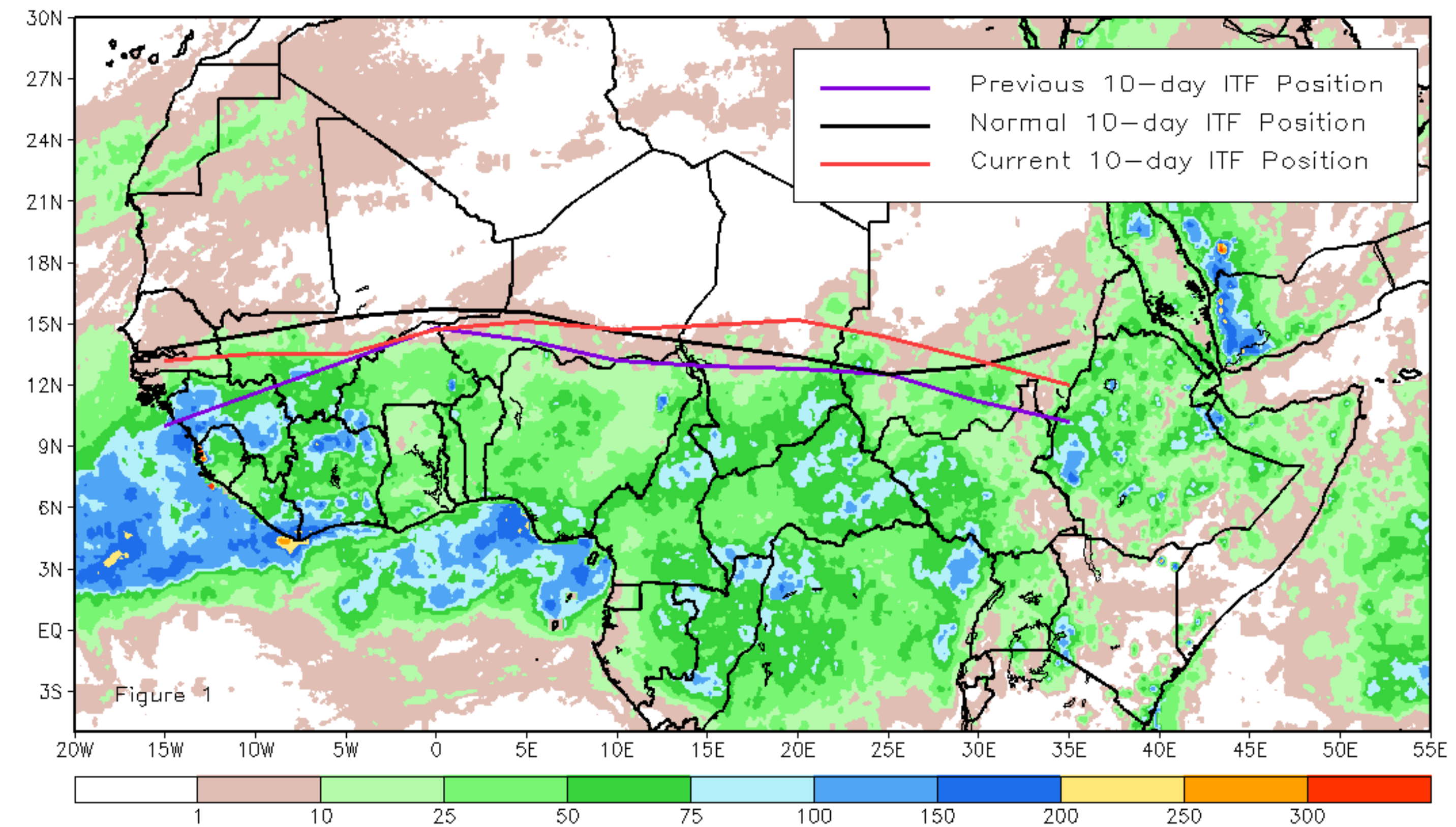
# CPC Africa Desk InterTropical (ITF) Front Analysis

## May 2023, Dekad 3

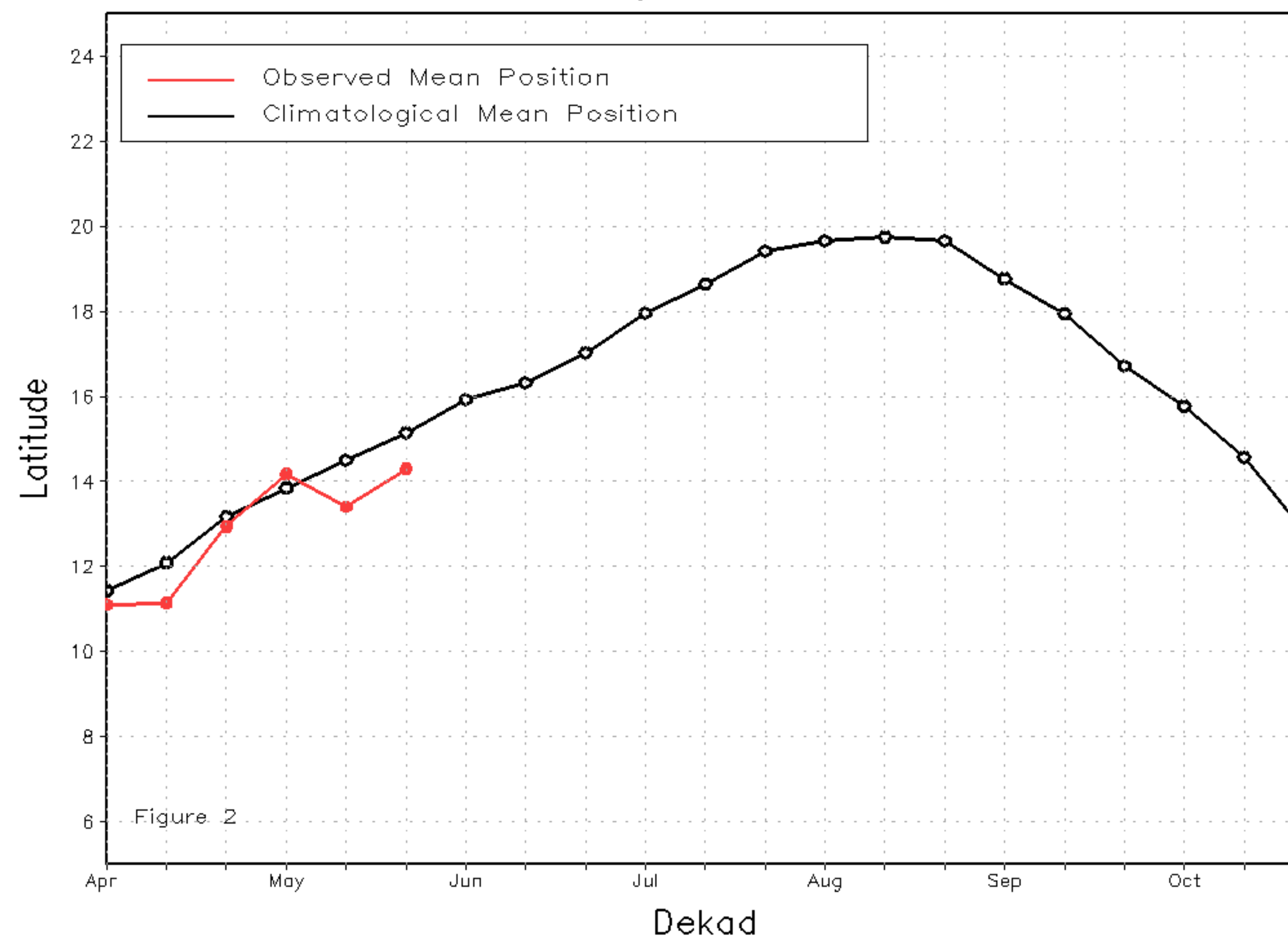
### Discussion:

From 21-31 May, the ITF propagated farther north relative to its previous position. The western (10W-10E) portion of the ITF was located approximately at 14.3N, which was below the climatological position by 0.8 degree. Also, at the eastern (20E-35E) portion, the ITF was approximated at 13.7N, which was above the long-term average position by 0.5 degree. Figure 1 displays the current position of the ITF relative to the climatological position during the 3rd dekad of May and its previous position during the 2nd dekad of May. Figures 2 and 3 are time series, illustrating the latitudinal positions for the western and eastern portions of the ITF, respectively, and their seasonal evolutions since the beginning of April 2023.

Current vs. Normal Dekadal ITF Position  
and RFE Accumulated Precipitation (mm)  
May 2023, Dekad 3



Mean Western Portion of the ITF: Averaged 10W to 10E  
As of: May 2023, Dekad 3



Mean Eastern Portion of the ITF: Averaged 20E to 35E  
As of: May 2023, Dekad 3

