



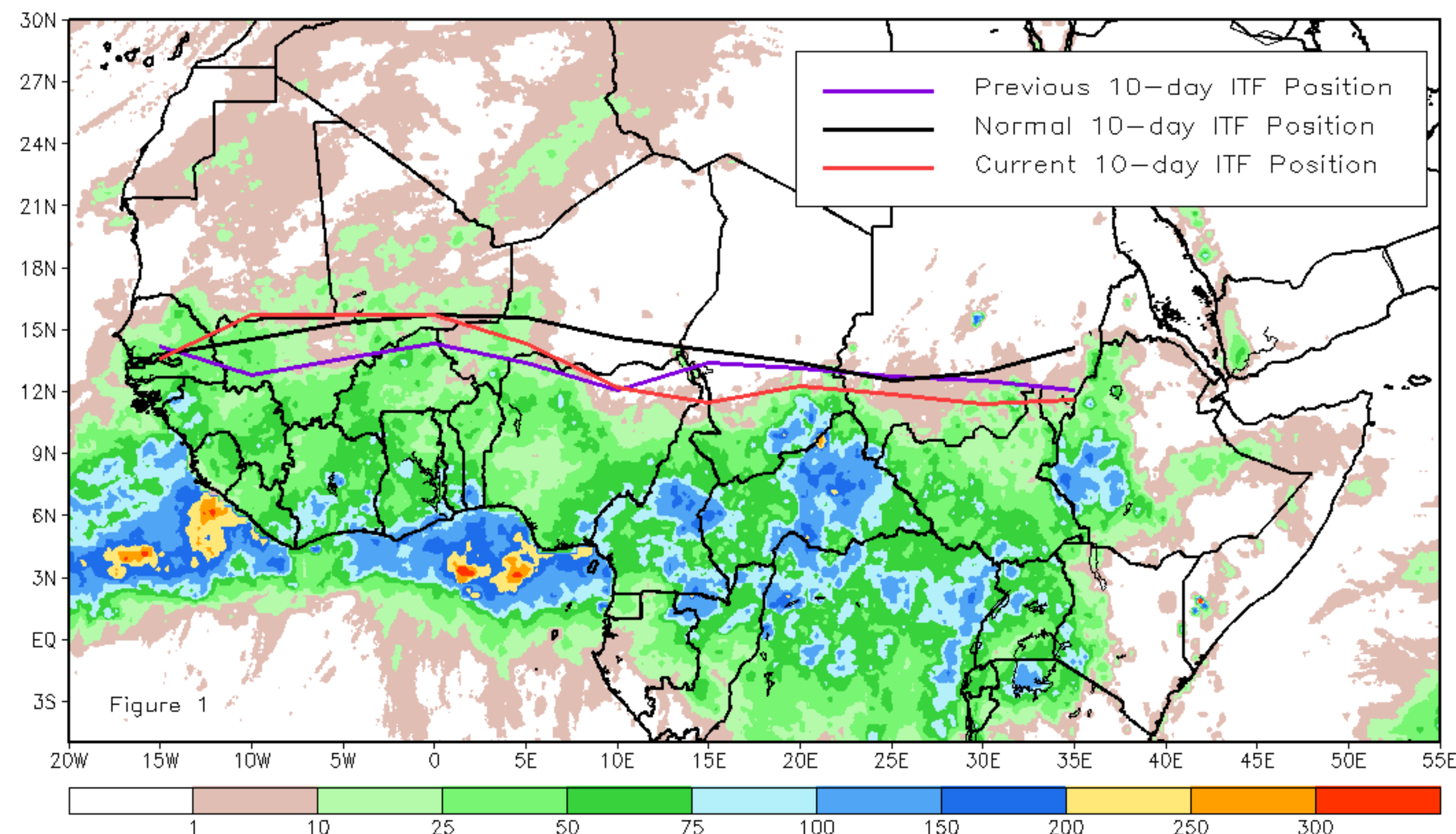
CPC Africa Desk InterTropical (ITF) Front Analysis

May 2022, Dekad 3

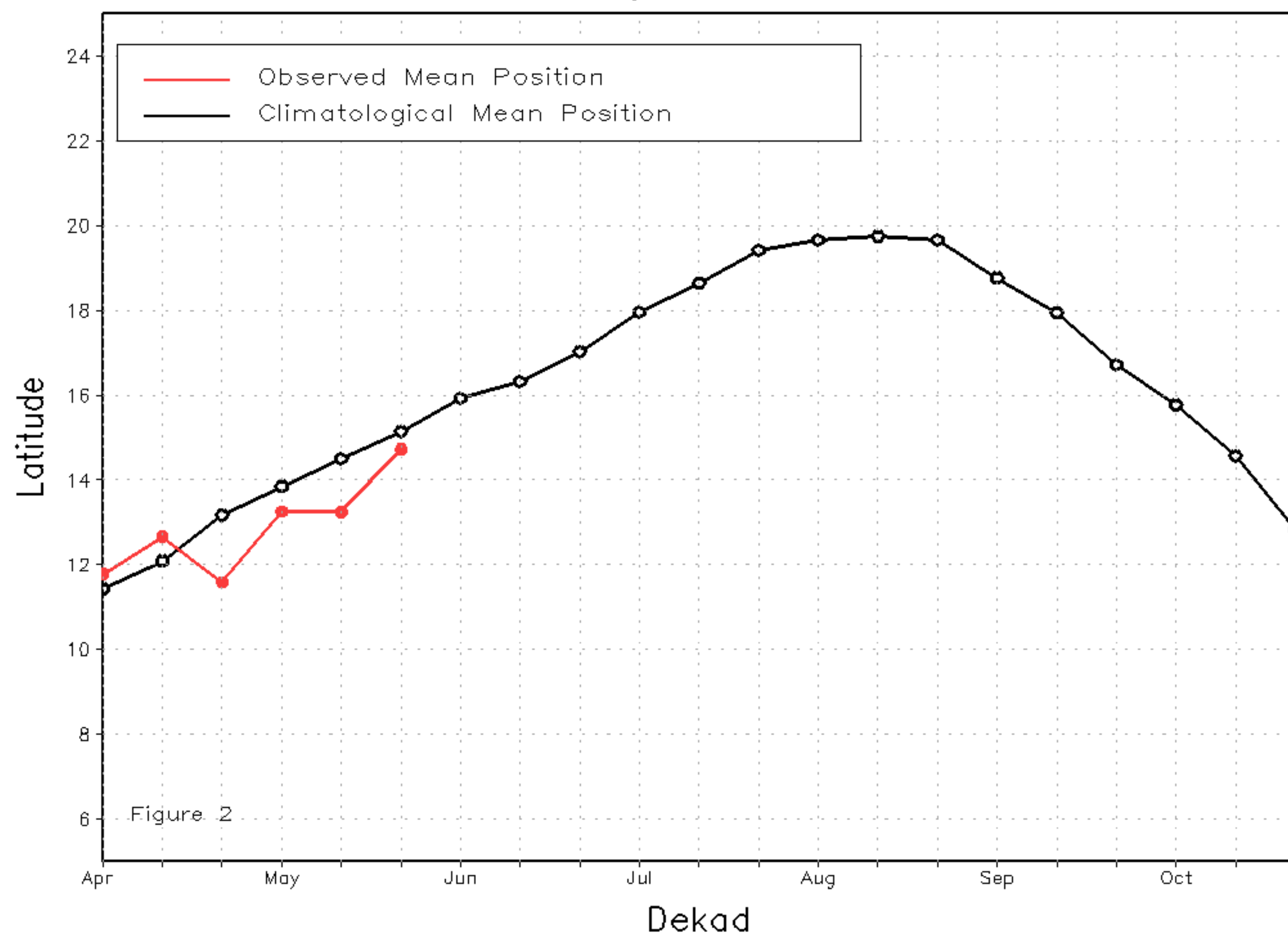
Discussion:

From 21-31 May, the ITF moved north and south, comparable to its previous position over the western and eastern portions, respectively. This resulted in an overall anomalous northerly and anomalous southerly position over the western and eastern portions, respectively. The western (10W-10E) portion of the ITF was located approximately at 14.7N, which was below the climatology position by 0.4 degree. The eastern (20E-35E) portion of the ITF was approximated at 11.8N, which was below the climatological position by 1.4 degree. Figure 1 displays the current position of the ITF relative to the long-term average position during the 3rd dekad of May and its previous position during the 2nd dekad of May. Figures 2 and 3 are time series, illustrating the latitudinal values of the western and eastern portions of the ITF, respectively, and their seasonal evolutions since the beginning of April 2022.

Current vs. Normal Dekadal ITF Position
and RFE Accumulated Precipitation (mm)
May 2022, Dekad 3



Mean Western Portion of the ITF: Averaged 10W to 10E
As of: May 2022, Dekad 3



Mean Eastern Portion of the ITF: Averaged 20E to 35E
As of: May 2022, Dekad 3

