



# CPC Africa Desk InterTropical (ITF) Front Analysis

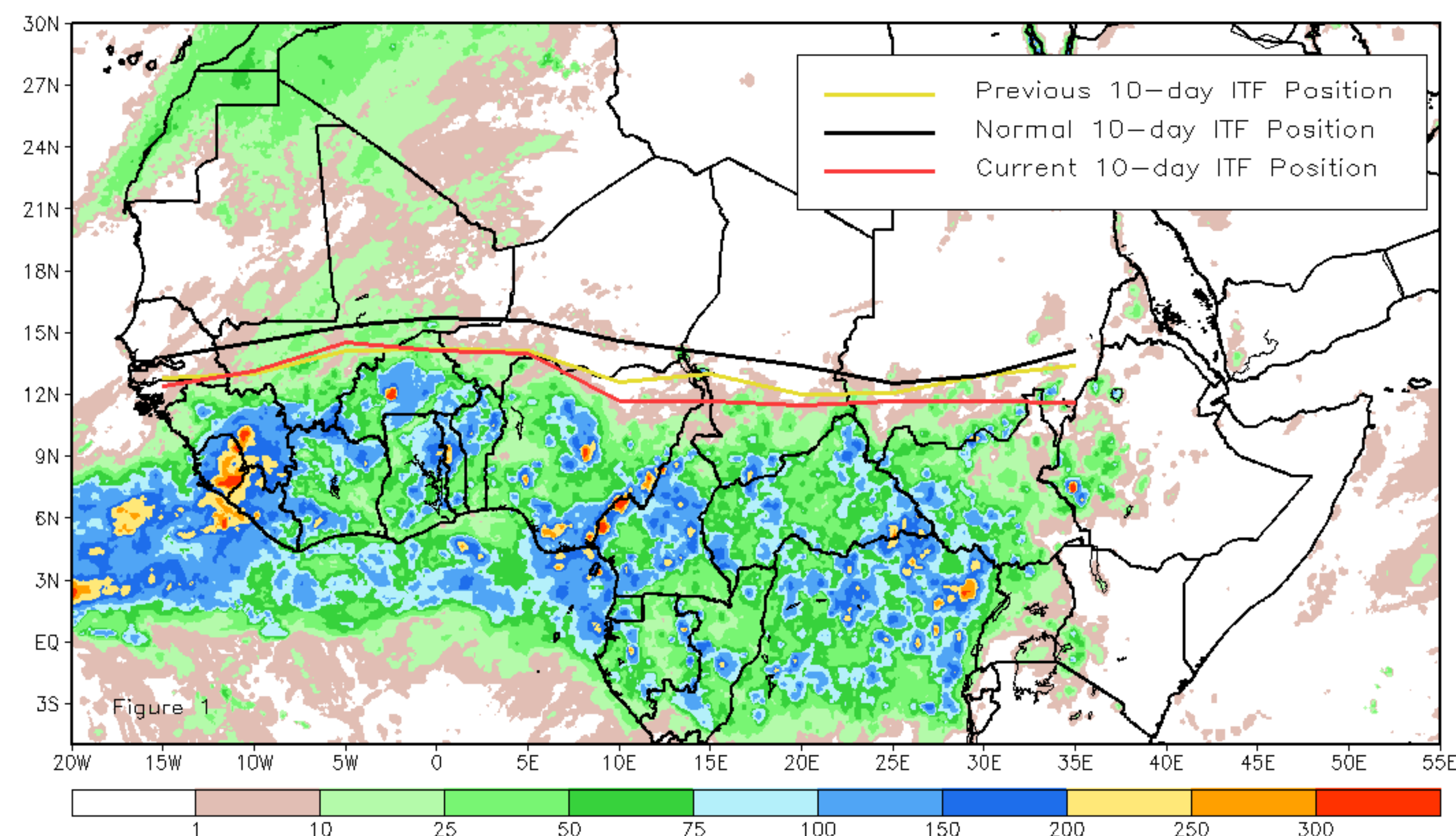
## May 2021, Dekad 3

### Discussion:

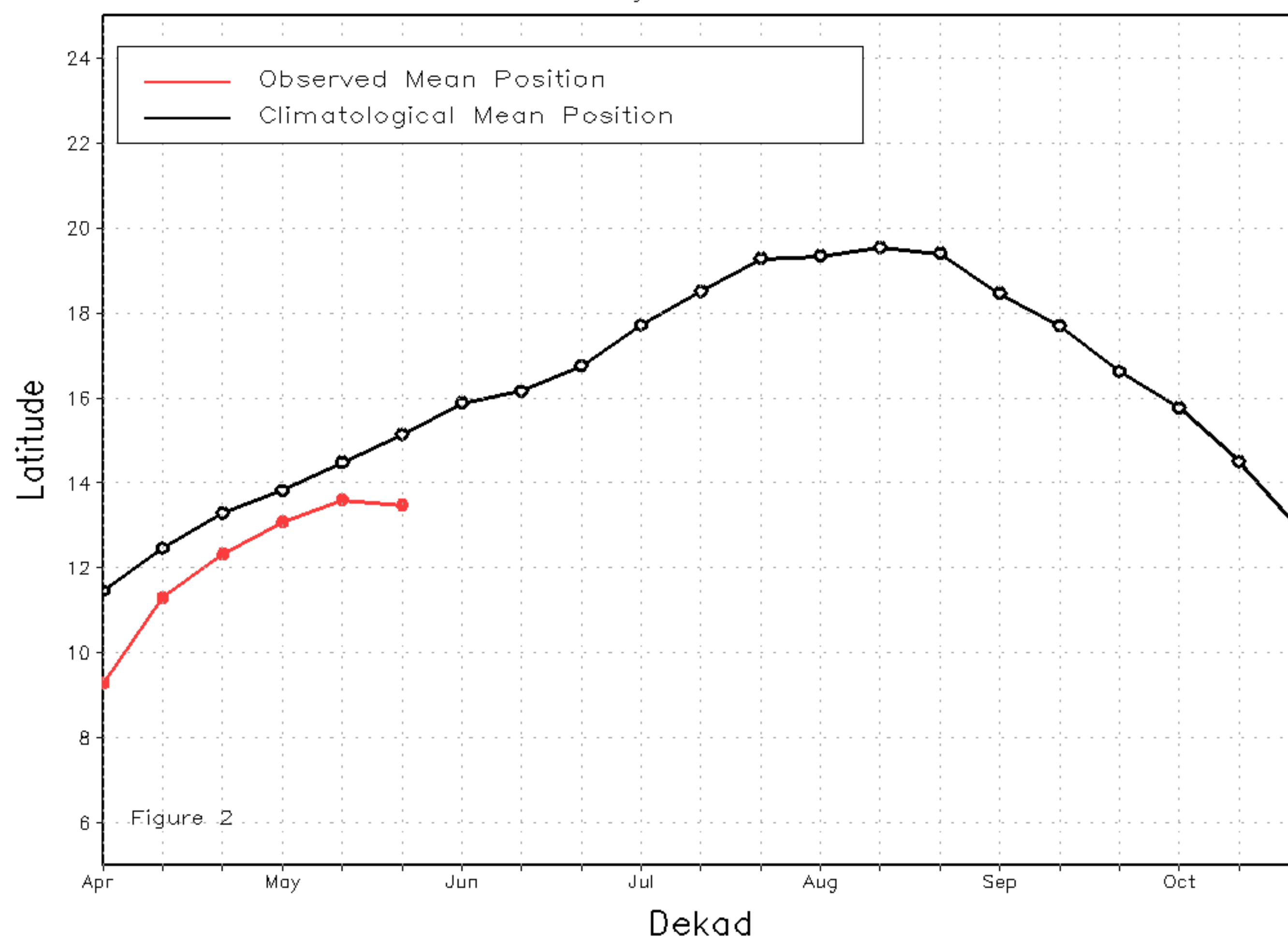
From 21-31 May, the ITF was at the same position as during the previous dekad between 15W-5E while it slightly move southward between 10E-35E. The western (10W-10E) portion of the ITF was located approximately at 13.5N, whereas the average position was centered at 15.1N. This abnormal position since the previous dekad explains the below normal rainfall prevailing across the Gulf of Guinea countries. The eastern (20E-35E) portion of the ITF was located at 11.6N, which was to the south of the climatological position that was centered at 13.2N. This shift has led to below normal rainfall across central and further northern Nigeria, southern Chad and southern Sudan. Figure 1 shows the current position of the ITF relative to the long-term average position during the 3rd dekad of May and its previous position during the 2nd dekad of May. Figures 2 and 3 are time series, illustrating the latitudinal values of the western and eastern portions of the ITF, respectively, and their seasonal evolutions since the beginning of April, 2021.

Current vs. Normal Dekadal ITF Position  
and RFE Accumulated Precipitation (mm)

May 2021, Dekad 3



Mean Western Portion of the ITF: Averaged 10W to 10E  
As of: May 2021, Dekad 3



Mean Eastern Portion of the ITF: Averaged 20E to 35E  
As of: May 2021, Dekad 3

