



CPC Africa Desk InterTropical (ITF) Front Analysis

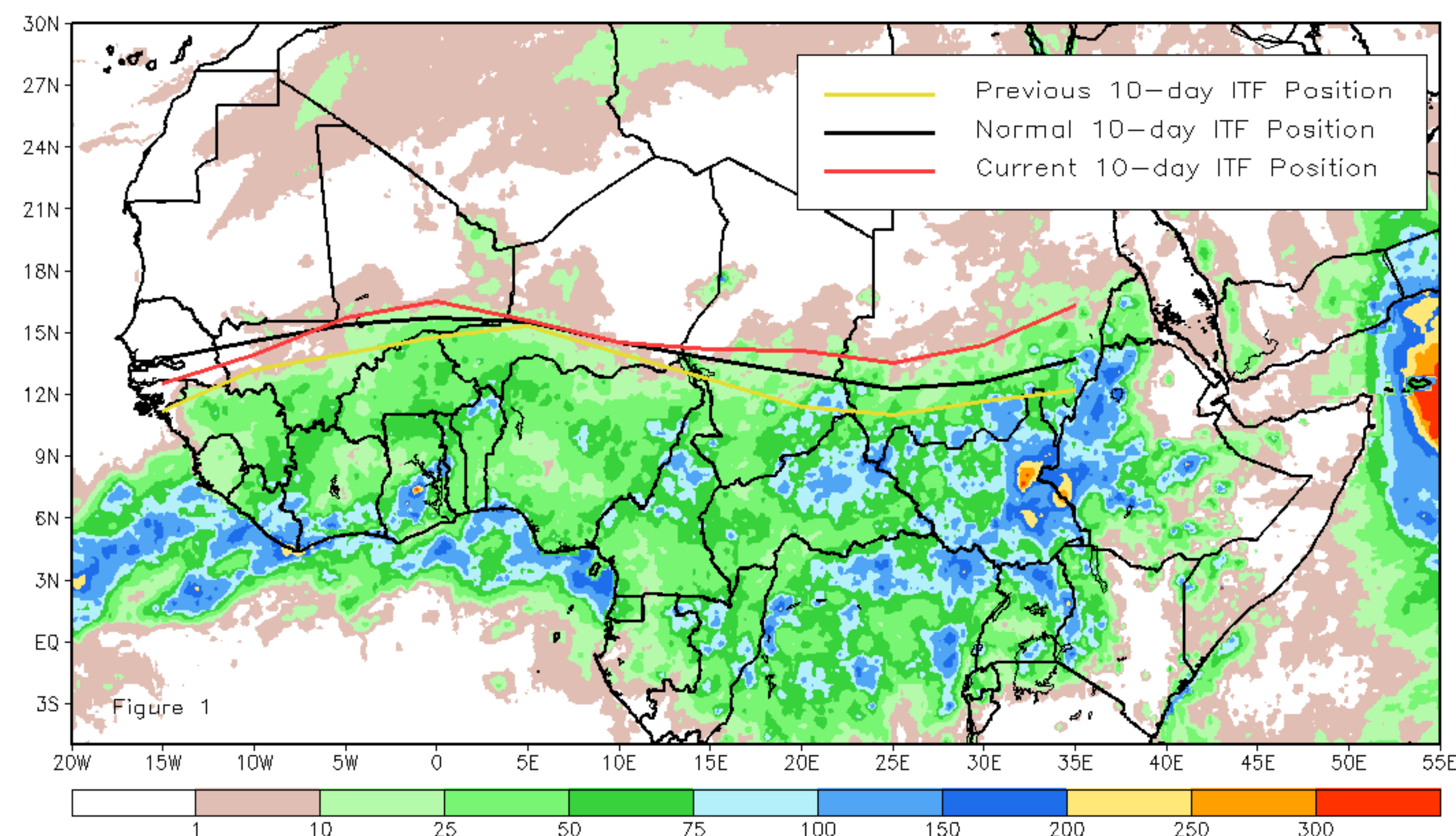
May 2018, Dekad 3

Discussion:

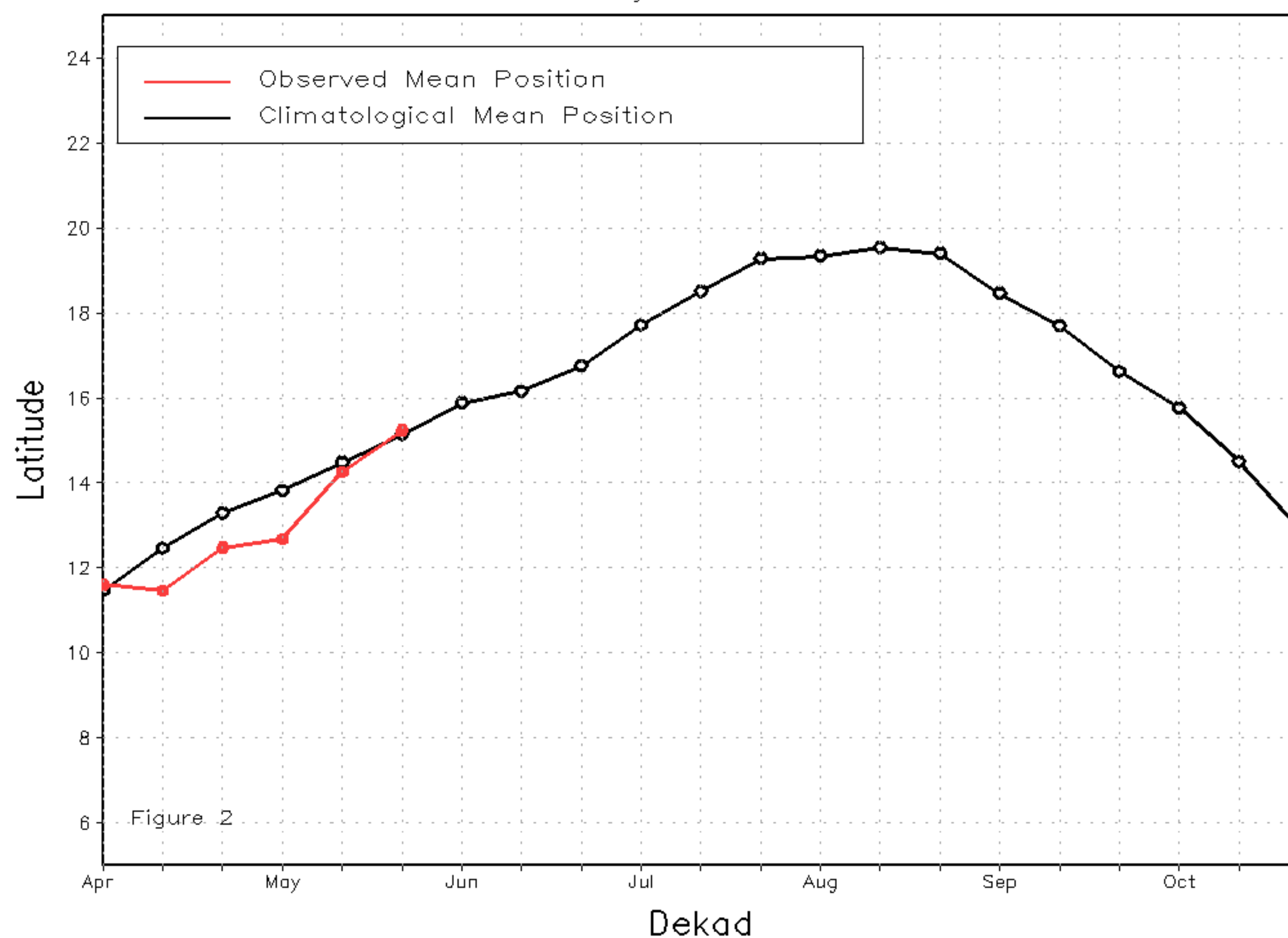
From May 21-31, the ITF continued its northward movement across Africa and, in general, placed itself to the north of the long-term average position during this time of the year. The mean western (10W-10E) portion of the ITF was located at 15.3N, which was anomalously north of the mean position by 0.2 degree. This near-normal position of the ITF could be responsible for the near-average rainfall over many areas during the period. Meanwhile, the mean eastern (20E-35E) portion of the ITF was approximated at 14.5N and was located farther north of the average by 1.6 degrees. This resulted in well above-average rain over many areas of Sudan and South Sudan. Figure 1 shows the current position of the ITF relative to the mean climatological (black) position during the 3rd dekad of May and its previous (yellow) position during the 2nd dekad of May. Figures 2 and 3 are time series, illustrating the mean latitudinal values of the western and eastern portion of the ITF, respectively, and their seasonal evolutions, compared to climatology, since April, 2018.

Current vs. Normal Dekadal ITF Position
and RFE Accumulated Precipitation (mm)

May 2018, Dekad 3



Mean Western Portion of the ITF: Averaged 10W to 10E
As of: May 2018, Dekad 3



Mean Eastern Portion of the ITF: Averaged 20E to 35E
As of: May 2018, Dekad 3

