



CPC Africa Desk InterTropical (ITF) Front Analysis

May 2017, Dekad 3

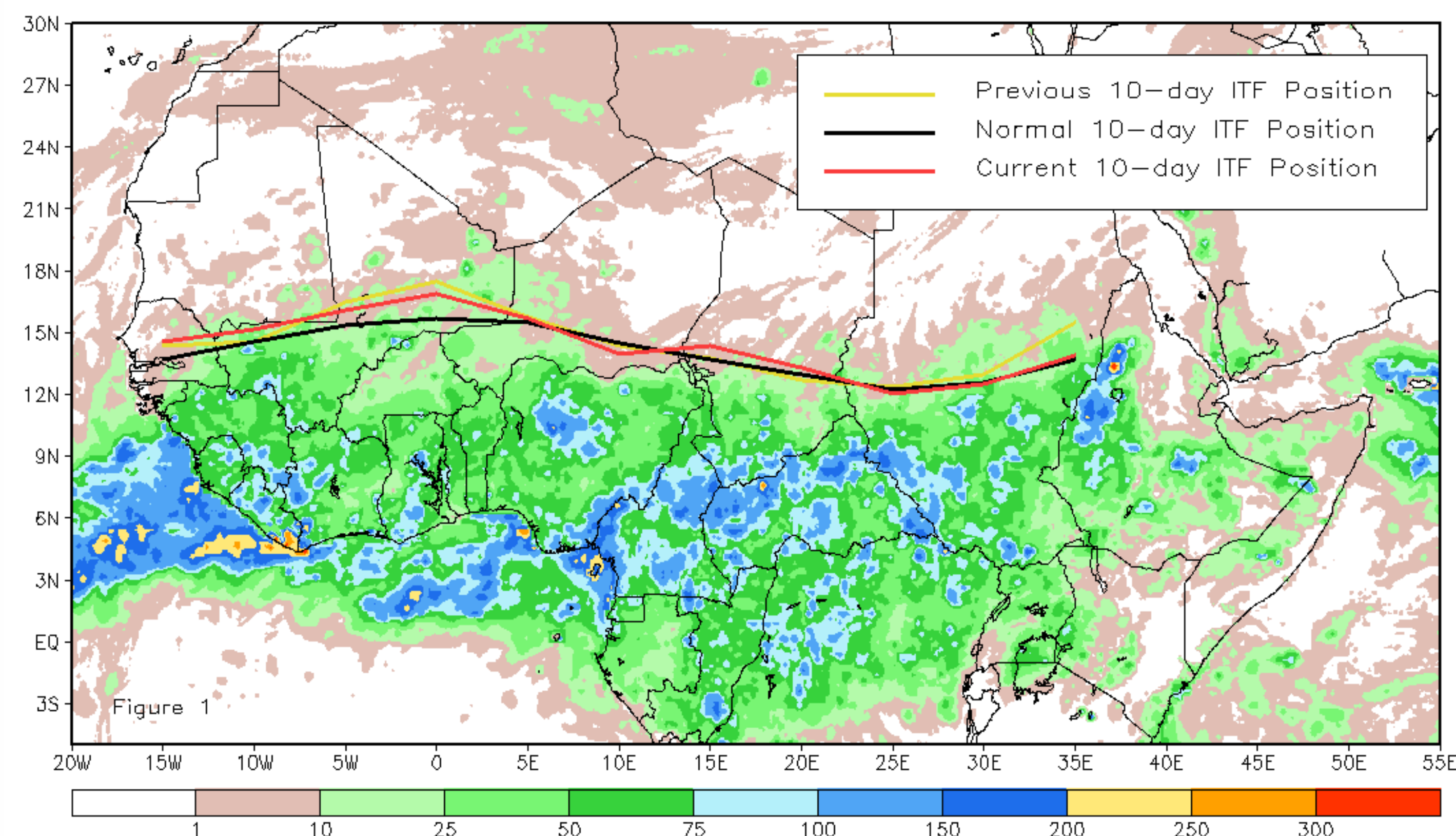
Discussion:

During the last dekad of May (May 21-31), the ITF experienced slight southward movement since the previous dekad. The mean western portion of the ITF (10W-10E) was approximated at 15.6N, located above the climatological normal position (15.1N) for the end of May despite being .2 degrees south of its previous mean position (15.8). Accordingly, some above-normal rains still reached into the Sahel. The mean eastern portion of the ITF (20E-35E) was approximated at 13.0N, 4 tenths of a degree south of its position last dekad. It

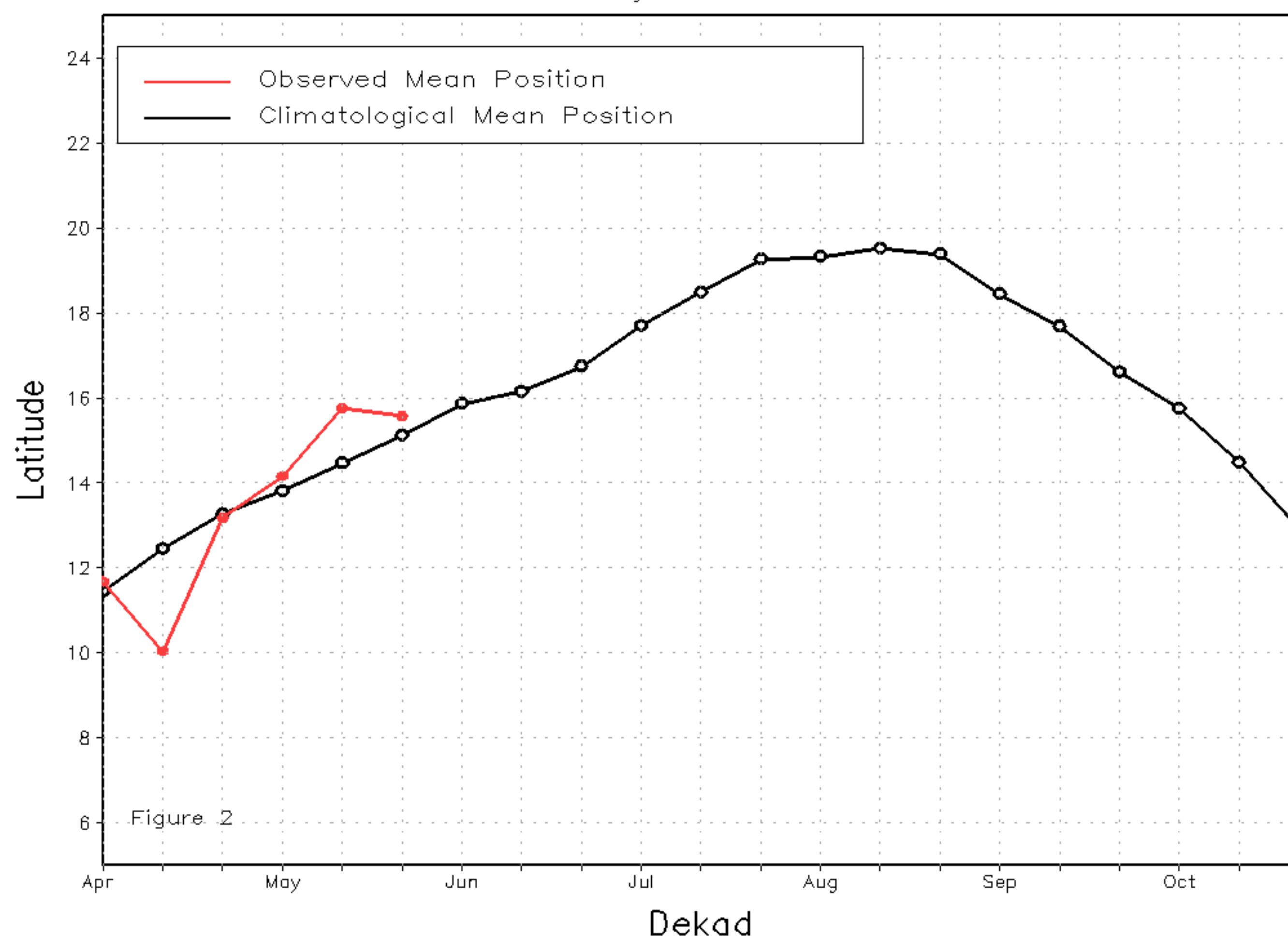
dekad of May meant that monsoonal convergence was more normally located in a location farther south than last dekad. Figures 2 and 3 are time series illustrating the mean latitudinal values of the western and eastern portions of the ITF, respectively, and their seasonal evolutions since the start of April, 2017.

Current vs. Normal Dekadal ITF Position
and RFE Accumulated Precipitation (mm)

May 2017, Dekad 3



Mean Western Portion of the ITF: Averaged 10W to 10E
As of: May 2017, Dekad 3



Mean Eastern Portion of the ITF: Averaged 20E to 35E
As of: May 2017, Dekad 3

