



# CPC Africa Desk InterTropical (ITF) Front Analysis

## May 2015, Dekad 3

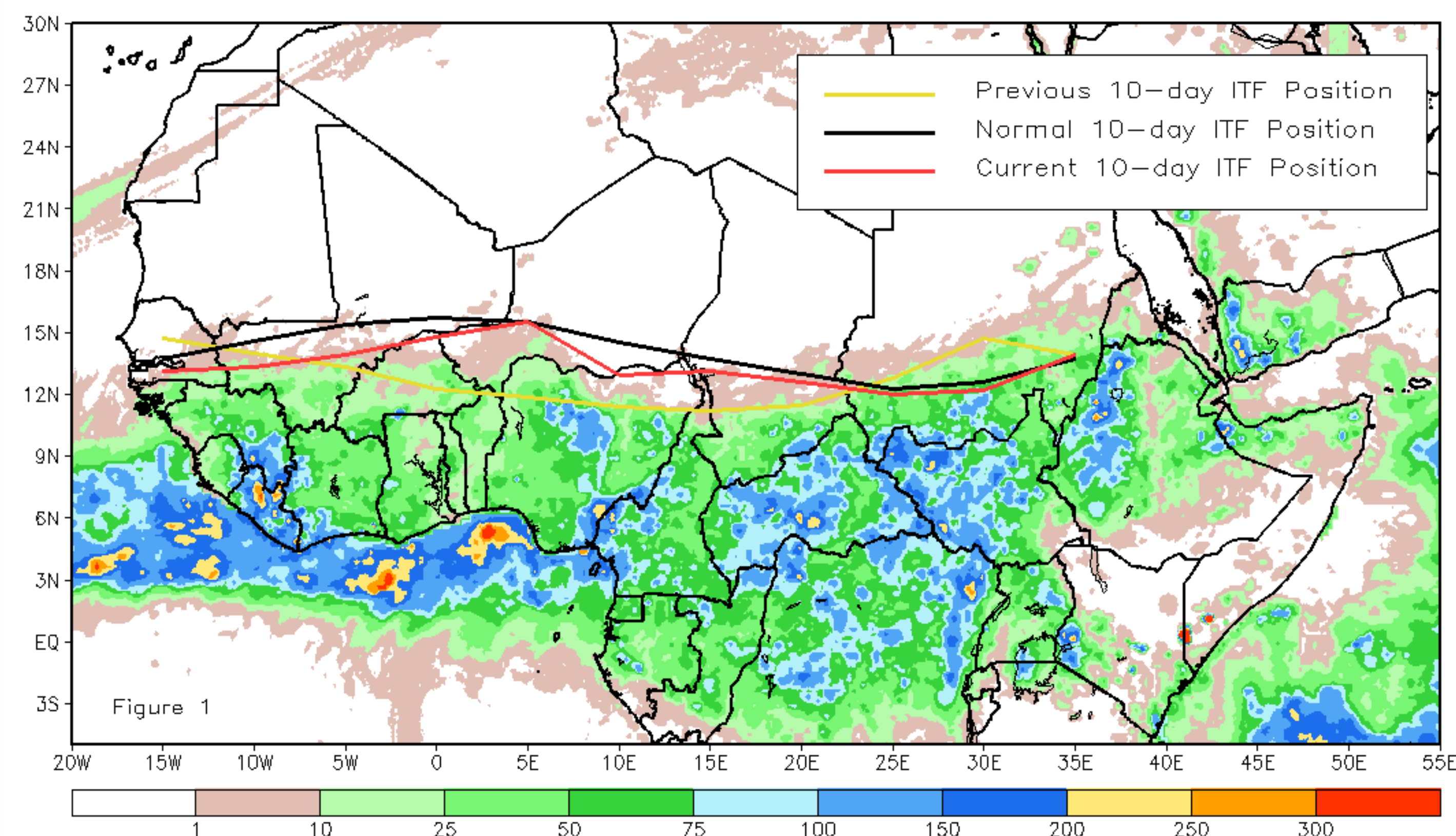
### Discussion:

During the 3rd dekad of May, the position of the ITF experienced much northward advancement in the west, and some equatorward retreat in the east compared to its previous position during the middle of May. The western averaged (10W-10E) position of the ITF was approximated at 14.1 degrees North, which has remained below the climatological normal position (15.5N) for the 2nd consecutive dekad.

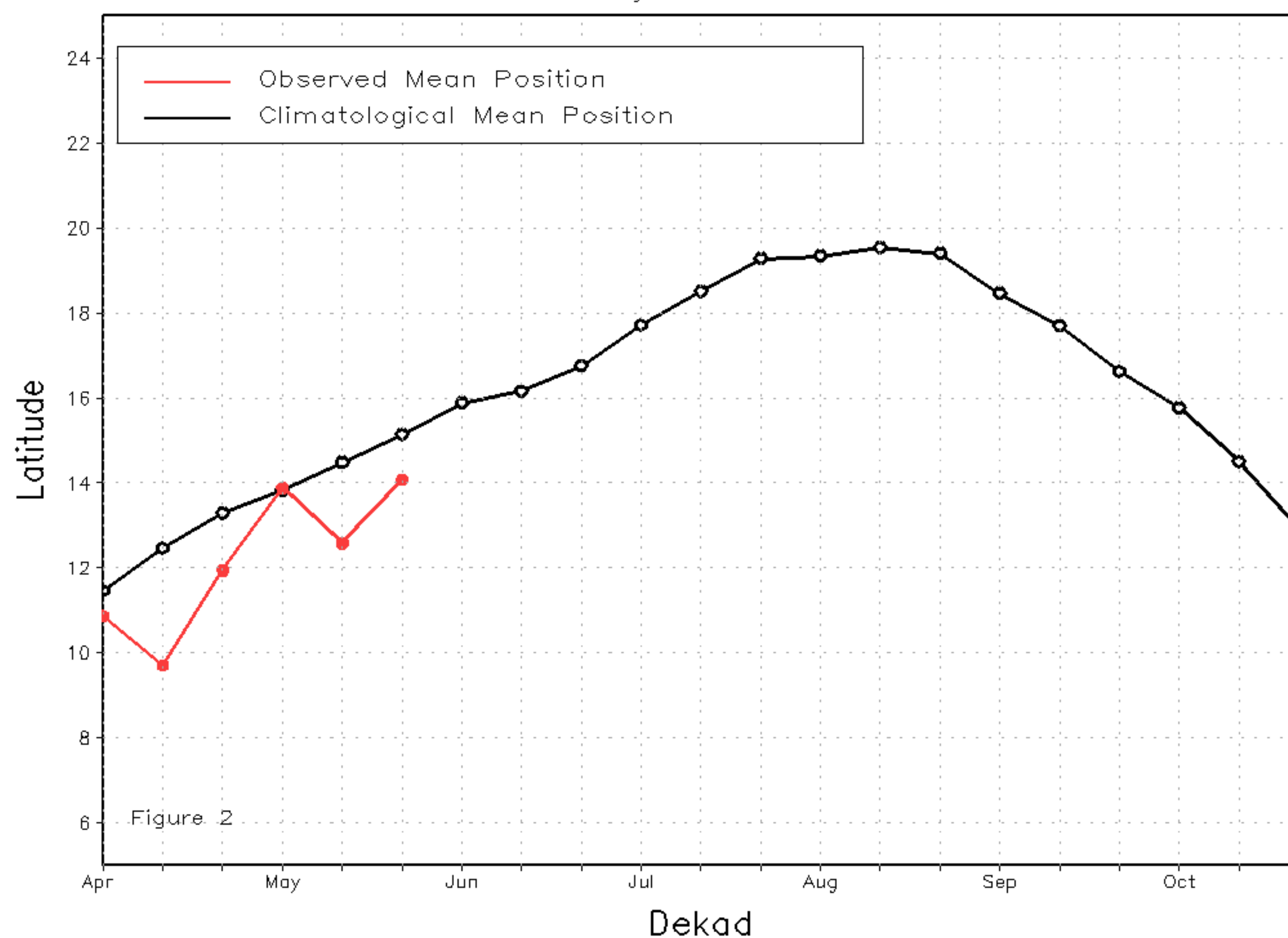
The mean eastern averaged (20E - 35E) position of the ITF was approximated at 12.7 degrees North, which fell slightly below the climatological normal position (12.9N) for late May. Figure 1 shows the current position of the ITF relative to its climatological position during the third dekad of May and its previous position during the second dekad of May. Figures 2 and 3 are time series, illustrating the mean latitudinal values of the western and eastern portion of the ITF, respectively, and their evolutions since April, 2015.

Current vs. Normal Dekadal ITF Position  
and RFE Accumulated Precipitation (mm)

May 2015, Dekad 3



Mean Western Portion of the ITF: Averaged 10W to 10E  
As of: May 2015, Dekad 3



Mean Eastern Portion of the ITF: Averaged 20E to 35E  
As of: May 2015, Dekad 3

