



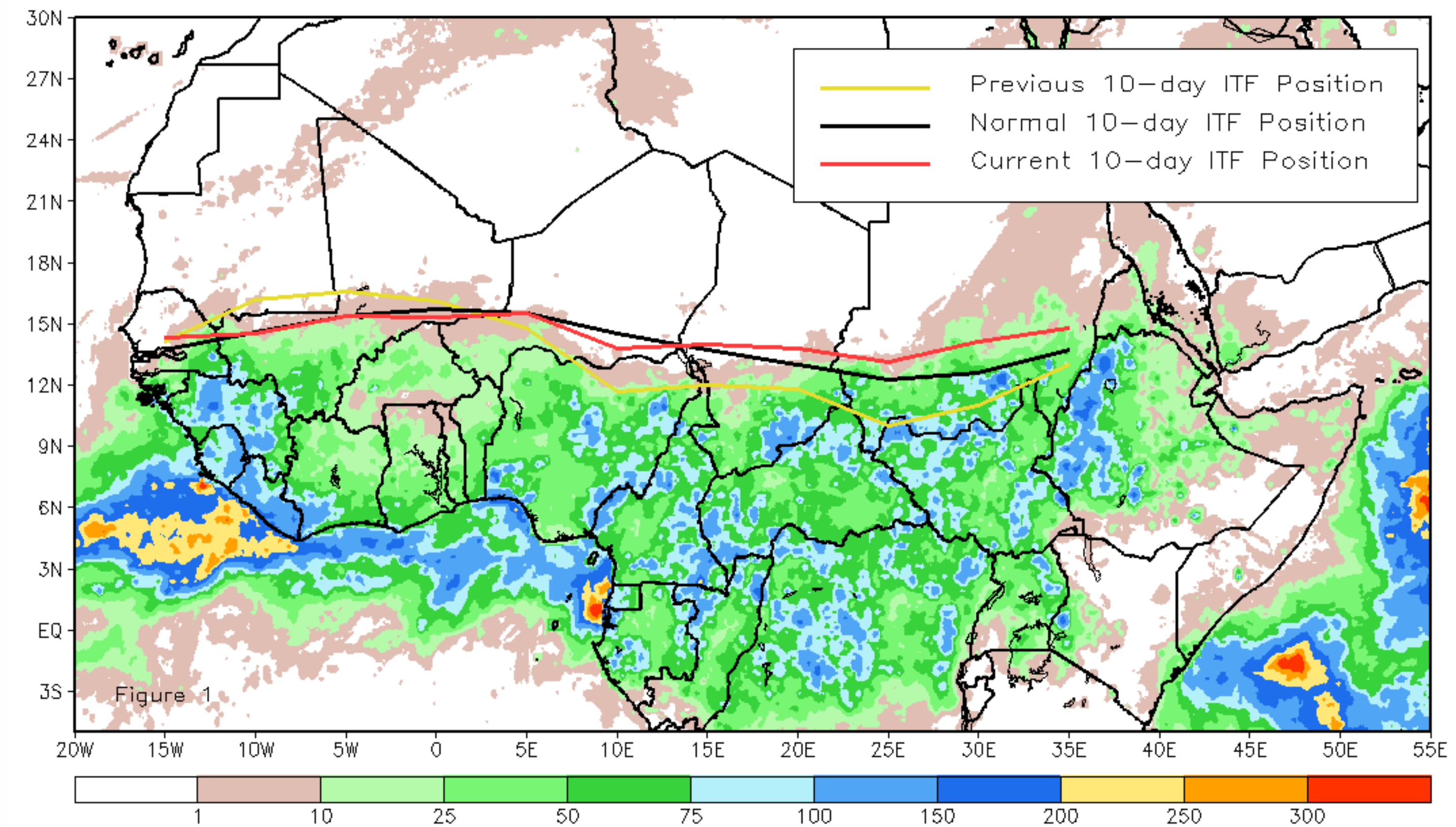
CPC Africa Desk InterTropical (ITF) Front Analysis

May 2014, Dekad 3

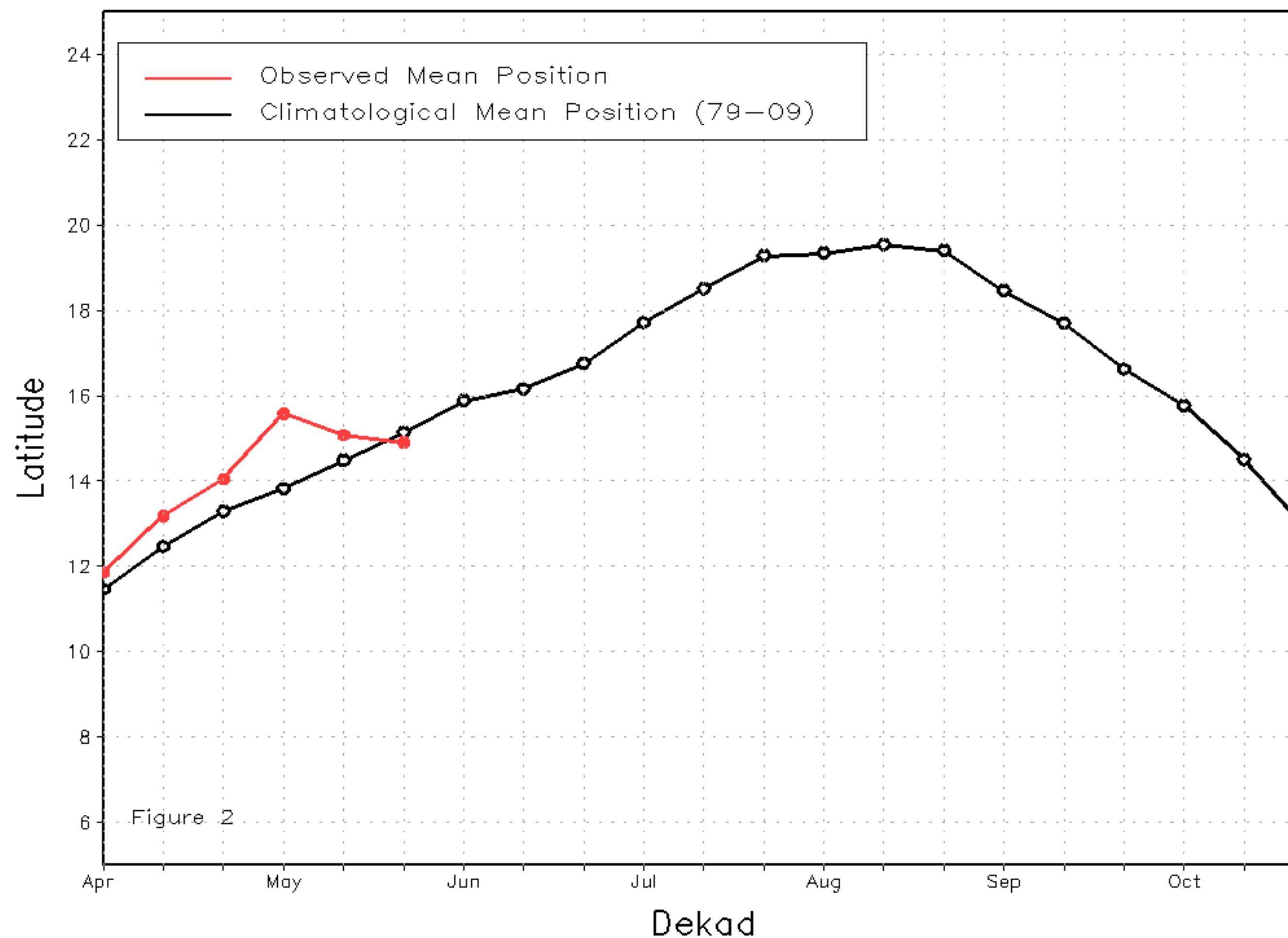
Discussion:

From May 21-31, 2014, the ITF continued to stall in its poleward progression across western Africa while it strongly progressed poleward across eastern portions. The mean western portion of the ITF (10W-10E) was located approximately at 14.9 degrees North, which is 0.2 degrees south of the mean climatological position and of the previous dekads position. This marked the second consecutive dekad that the ITF was equatorward of the previous dekads position. However, rain continued to be average to above-average across much of West Africa. The mean eastern portion of the ITF (20E-35E) was located approximately at 14.0 degrees North, which was 1.1 degrees north of the mean climatological position and 2.6 degrees north of the previous dekads position. After anomalous northerlies dominated the previous dekad, a return to southerly flow helped push the ITF north bringing anomalously heavy rain to South Sudan and Sudan. Figure 1 shows the current ITF position relative to its long-term average position during the third dekad of May and its previous position during the second dekad of May. Figures 2 and 3 are time series, illustrating the mean latitudinal values of the western and eastern portion of the ITF, respectively, and their evolutions since April, 2014.

Current vs. Normal Dekadal ITF Position
and RFE Accumulated Precipitation (mm)
May 2014, Dekad 3



Mean Western Portion of the ITF: Averaged 10W to 10E
As of: May 2014, Dekad 3



Mean Eastern Portion of the ITF: Averaged 20E to 35E
As of: May 2014, Dekad 3

