



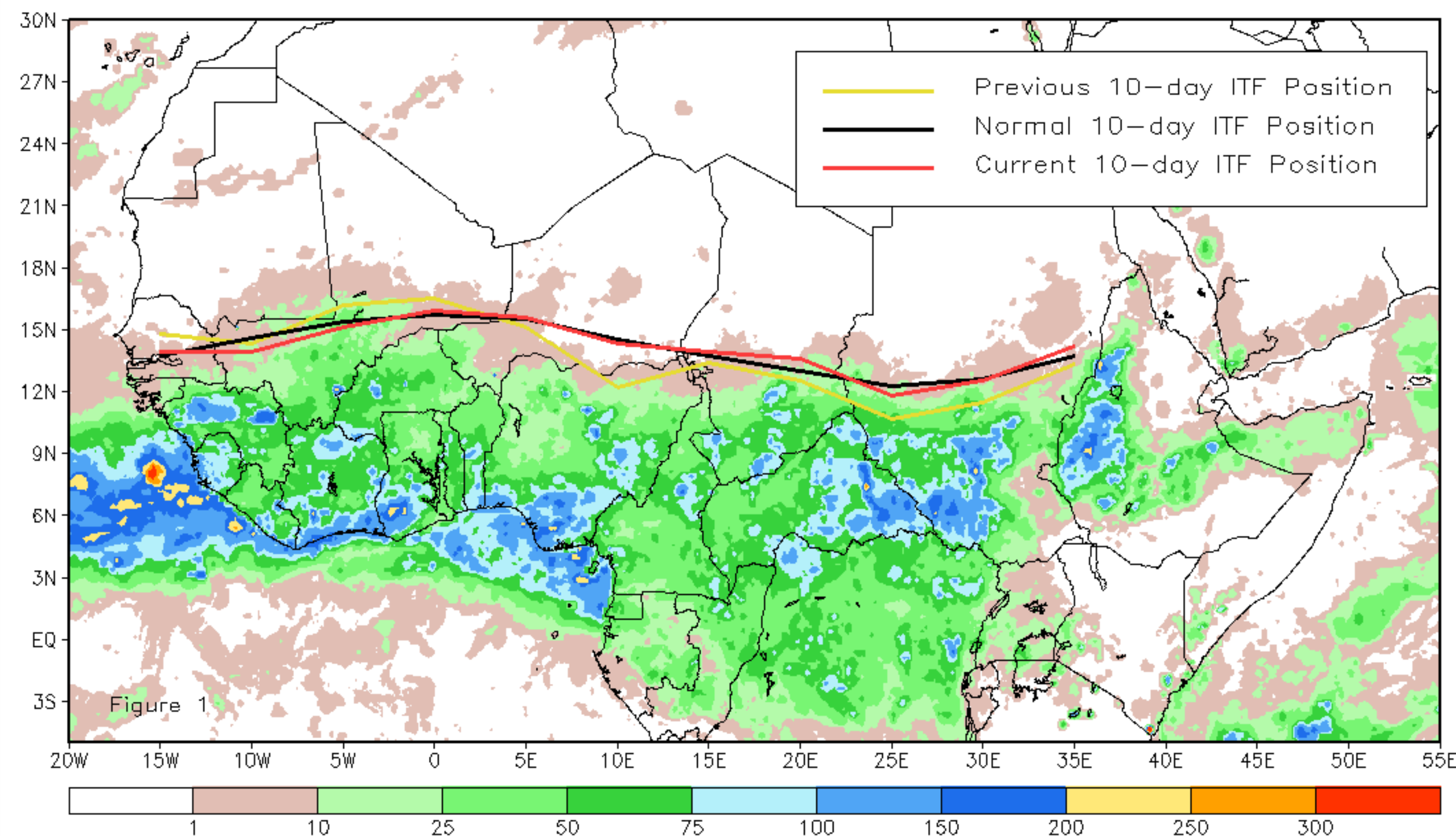
CPC Africa Desk InterTropical (ITF) Front Analysis

May 2013, Dekad 3

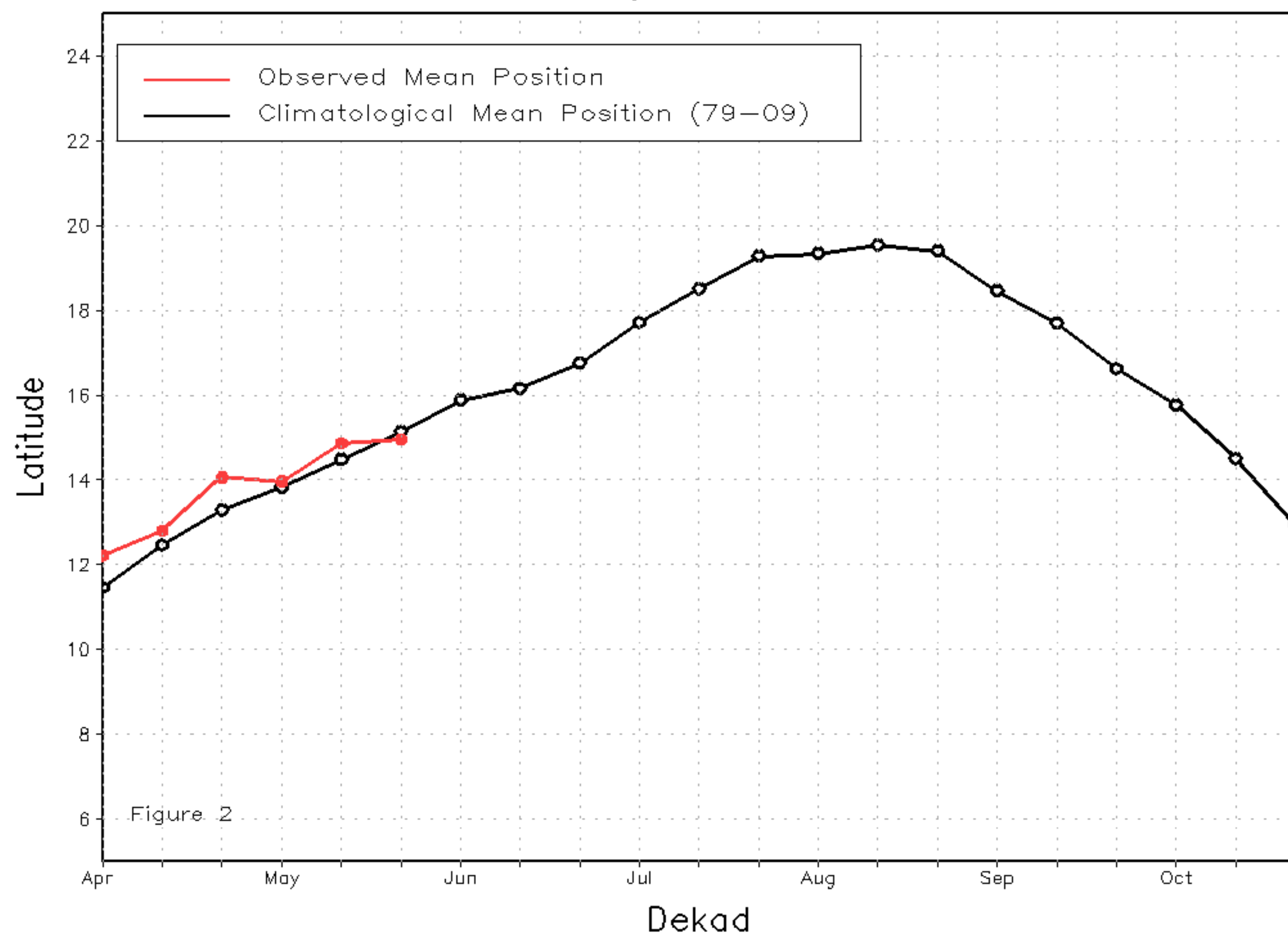
Discussion:

From May 21-31, 2013, the ITF remained generally close to its climatological position during the last dekad of May in both the east and west. The ITF progressed northward more so in the east than the west, though. The mean western portion of the ITF (10W-10E) was located approximately at 15.0 degrees North, which was only 0.1 degrees south of the mean climatological position. However, the ITF during the third dekad of May was only 0.1 degrees north of the previous dekads position, indicating little northward advancement. The mean eastern portion of the ITF (20E-35E) was located approximately at 13.0 degrees North, which was 0.1 degrees north of the mean climatological position, but represented a 0.5 degree northward advancement compared to the previous dekads position. Figure 1 shows the current ITF position relative to its long-term average position during the third dekad of May and its previous position during the second dekad of May. Figures 2 and 3 are time series, illustrating the mean latitudinal values of the western and eastern portion of the ITF, respectively, and their evolutions since April, 2013.

Current vs. Normal Dekadal ITF Position
and RFE Accumulated Precipitation (mm)
May 2013, Dekad 3



Mean Western Portion of the ITF: Averaged 10W to 10E
As of: May 2013, Dekad 3



Mean Eastern Portion of the ITF: Averaged 20E to 35E
As of: May 2013, Dekad 3

