



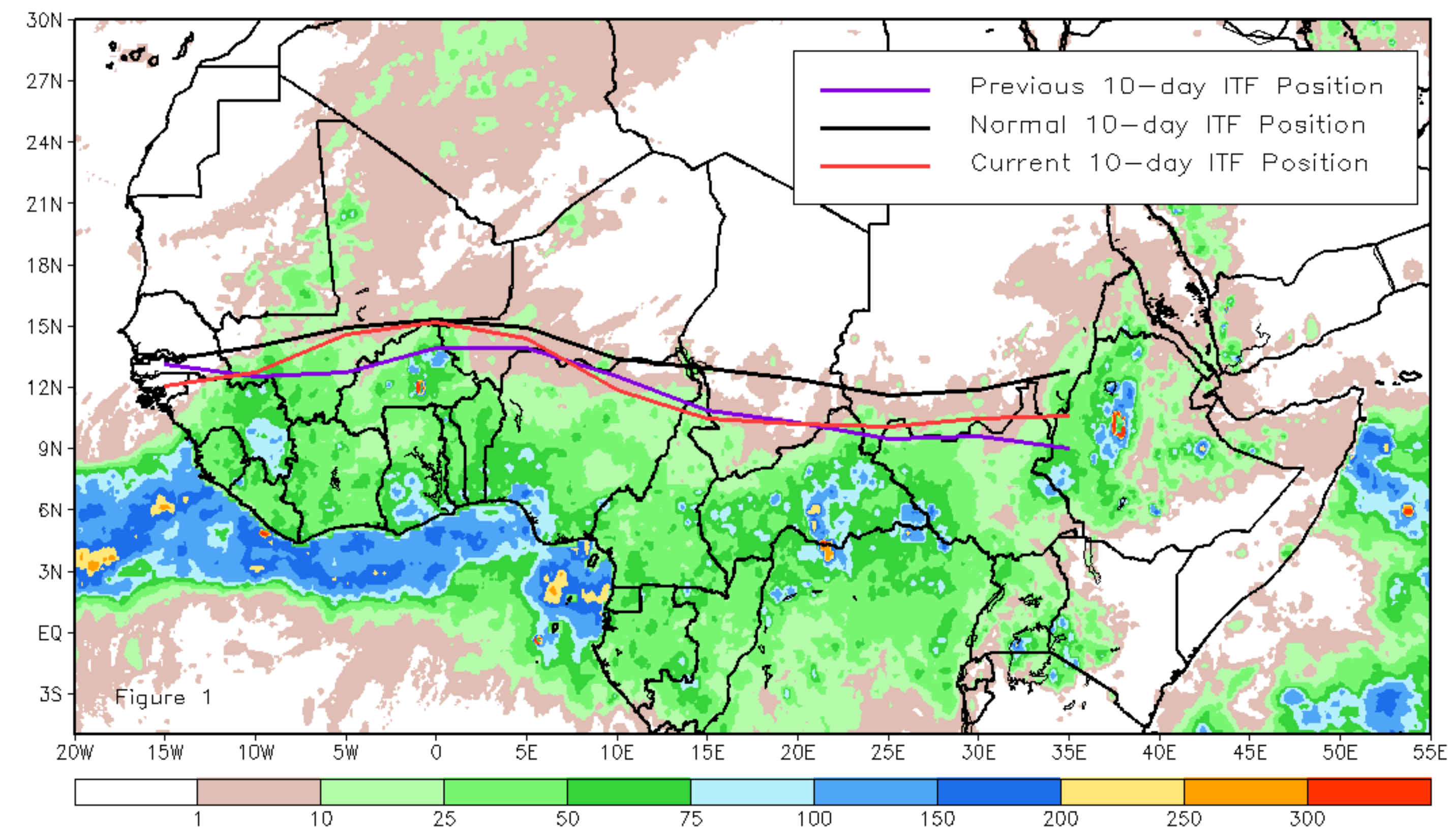
CPC Africa Desk InterTropical (ITF) Front Analysis

May 2024, Dekad 2

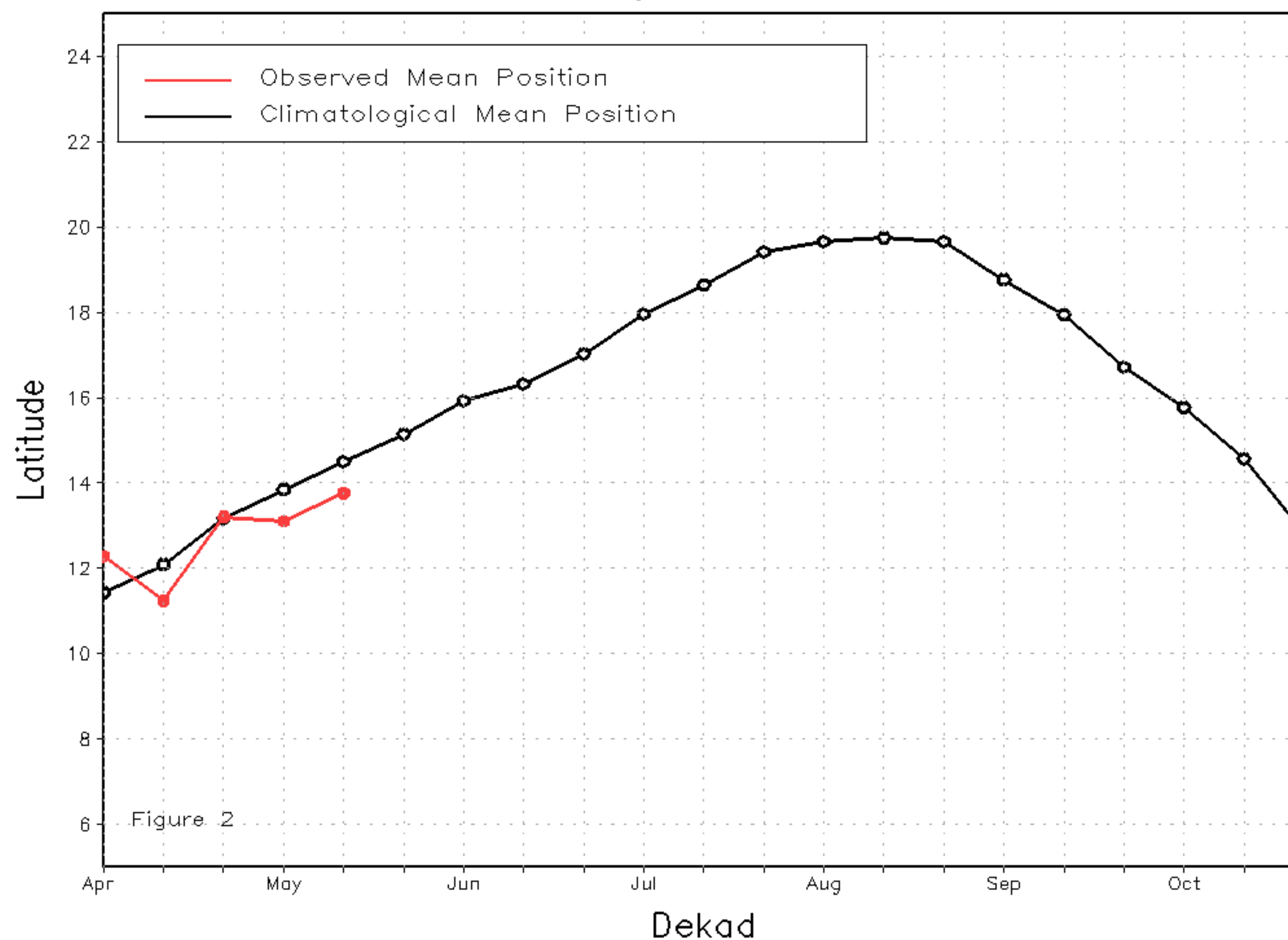
Discussion:

From May 11-20, the Inter-Tropical Front (ITF) moved northward, except in Guinea-Bissau, Nigeria, and northern Cameroon, where it moved southward relative to its previous position. The western (10W-10E) portion of the ITF was located approximately at 13.8N, which was below the climatological position by 0.7 degrees. Also, at the eastern (20E-35E) portion, the ITF was approximated at 10.4N, which was below the long-term average position by 1.8 degrees. Figure 1 displays the current position of the ITF relative to the climatological position during the 2nd dekad of May and its previous position during the 1st dekad of May. Figures 2 and 3 are time series, illustrating the latitudinal positions for the western and eastern portions of the ITF, respectively, and their seasonal evolutions since the beginning of April 2024.

Current vs. Normal Dekadal ITF Position
and RFE Accumulated Precipitation (mm)
May 2024, Dekad 2



Mean Western Portion of the ITF: Averaged 10W to 10E
As of: May 2024, Dekad 2



Mean Eastern Portion of the ITF: Averaged 20E to 35E
As of: May 2024, Dekad 2

