



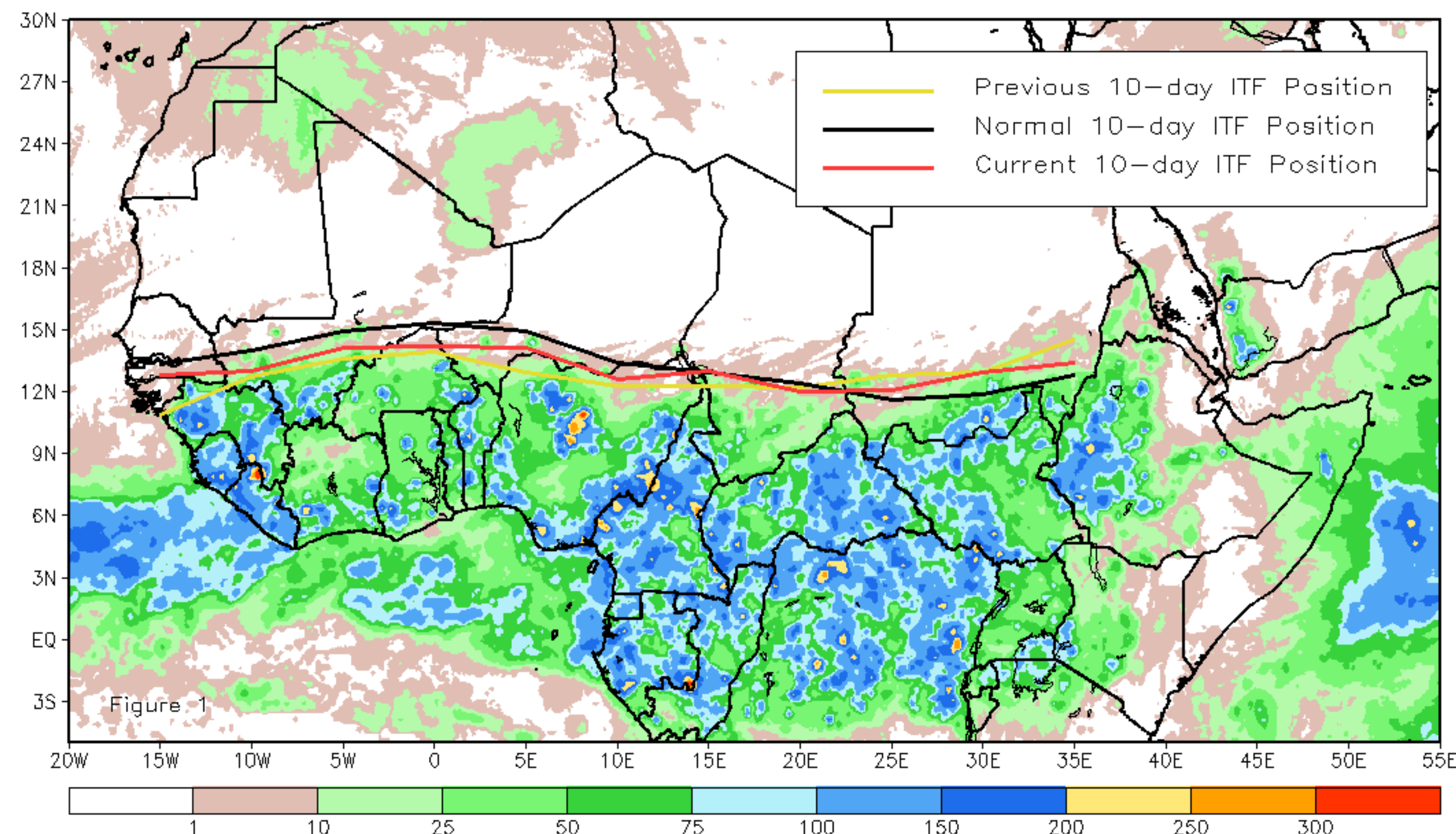
CPC Africa Desk InterTropical (ITF) Front Analysis

May 2021, Dekad 2

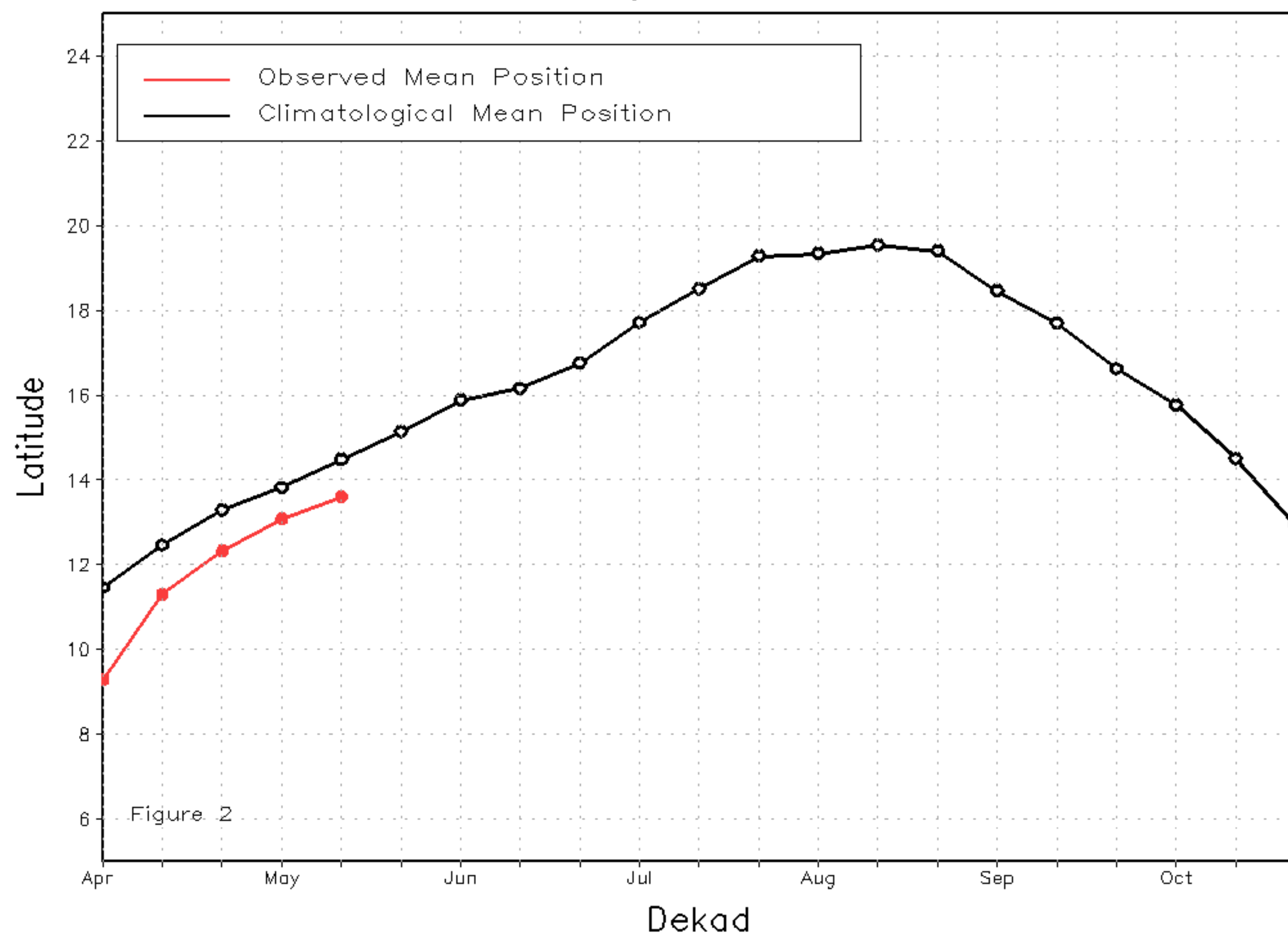
Discussion:

From 11-20 May, the ITF experienced a slight advancement northward relative to its position during the previous period. However, the ITF remained anomalously to the south of the mean position along its western segment, while maintaining an abnormal northerly position along its eastern portion. The western (10W-10E) portion of the ITF was located approximately at 13.6N, whereas the average position was centered at 14.5N. This below-average position might have contributed to continued below-average rainfall along parts of the Gulf of Guinea. In contrast, the eastern (20E-35E) portion of the ITF was located at 12.6N, which was to the north of the climatological position that was centered at 12.2N. This persistent above-average position partially explained above-average rainfall over areas of Sudan and South Sudan, particularly along the border. Figure 1 shows the current position of the ITF relative to the long-term average position during the 2nd dekad of May and its previous position during the 1st dekad of May. Figures 2 and 3 are time series, illustrating the latitudinal values of the western and eastern portions of the ITF, respectively, and their seasonal evolutions since the beginning of April, 2021.

Current vs. Normal Dekadal ITF Position
and RFE Accumulated Precipitation (mm)
May 2021, Dekad 2



Mean Western Portion of the ITF: Averaged 10W to 10E
As of: May 2021, Dekad 2



Mean Eastern Portion of the ITF: Averaged 20E to 35E
As of: May 2021, Dekad 2

