



CPC Africa Desk InterTropical (ITF) Front Analysis

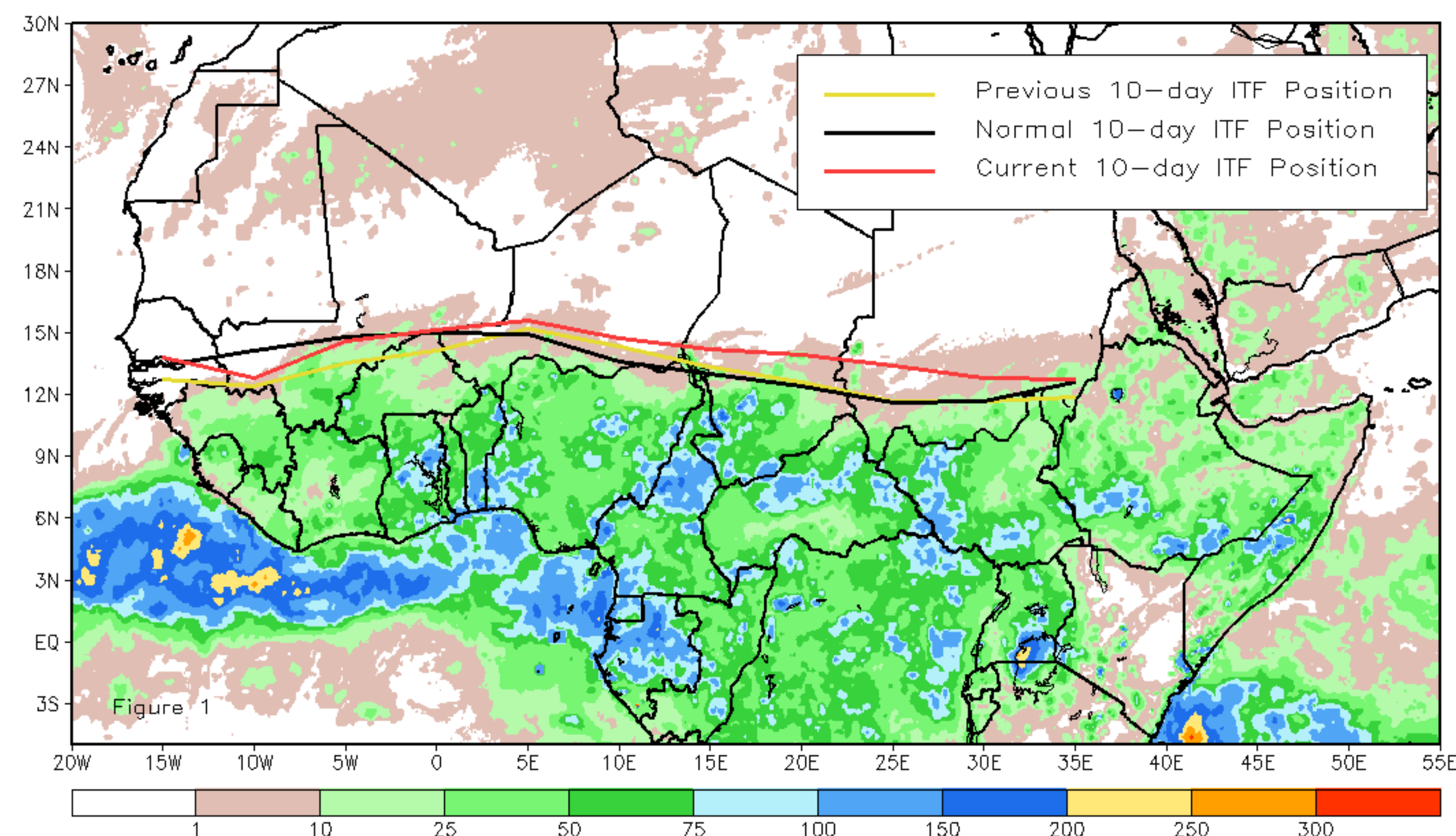
May 2019, Dekad 2

Discussion:

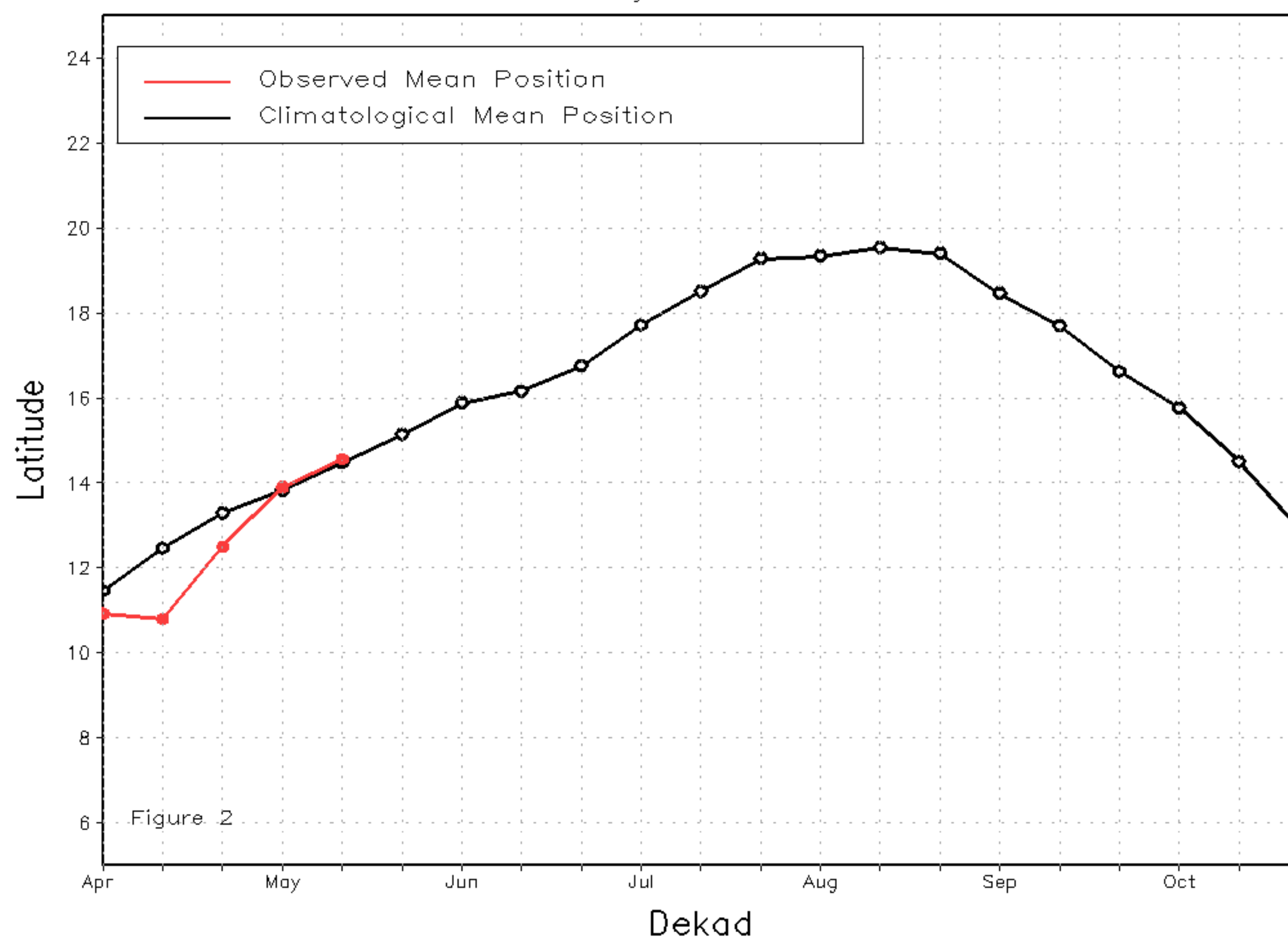
From May 11-20, the ITF advanced farther north across Africa. The mean western (10W-10E) portion of the ITF moved slightly north and was centered over 14.6 degrees N, which was, therefore, located to the north of the climatological average by 0.1 degree. This may have favored above-average rainfall over the central portions of the Gulf of Guinea and parts of the Sahel. The mean eastern (20E-35E) portion of the ITF propagated substantially to the north and was approximated at 13.2 degrees N, which to the north of the mean position by 1.1 degrees. This may be responsible for the observed above-average rainfall over southern Sudan and western South Sudan during the period. Figure 1 shows the current position of the ITF relative to the long-term average position during the 2nd dekad of May and its previous position during the 1st dekad of May. Figures 2 and 3 are time series, illustrating the latitudinal values of the western and eastern portions of the ITF, respectively, and their seasonal evolutions since April, 2019.

Current vs. Normal Dekadal ITF Position
and RFE Accumulated Precipitation (mm)

May 2019, Dekad 2



Mean Western Portion of the ITF: Averaged 10W to 10E
As of: May 2019, Dekad 2



Mean Eastern Portion of the ITF: Averaged 20E to 35E
As of: May 2019, Dekad 2

