



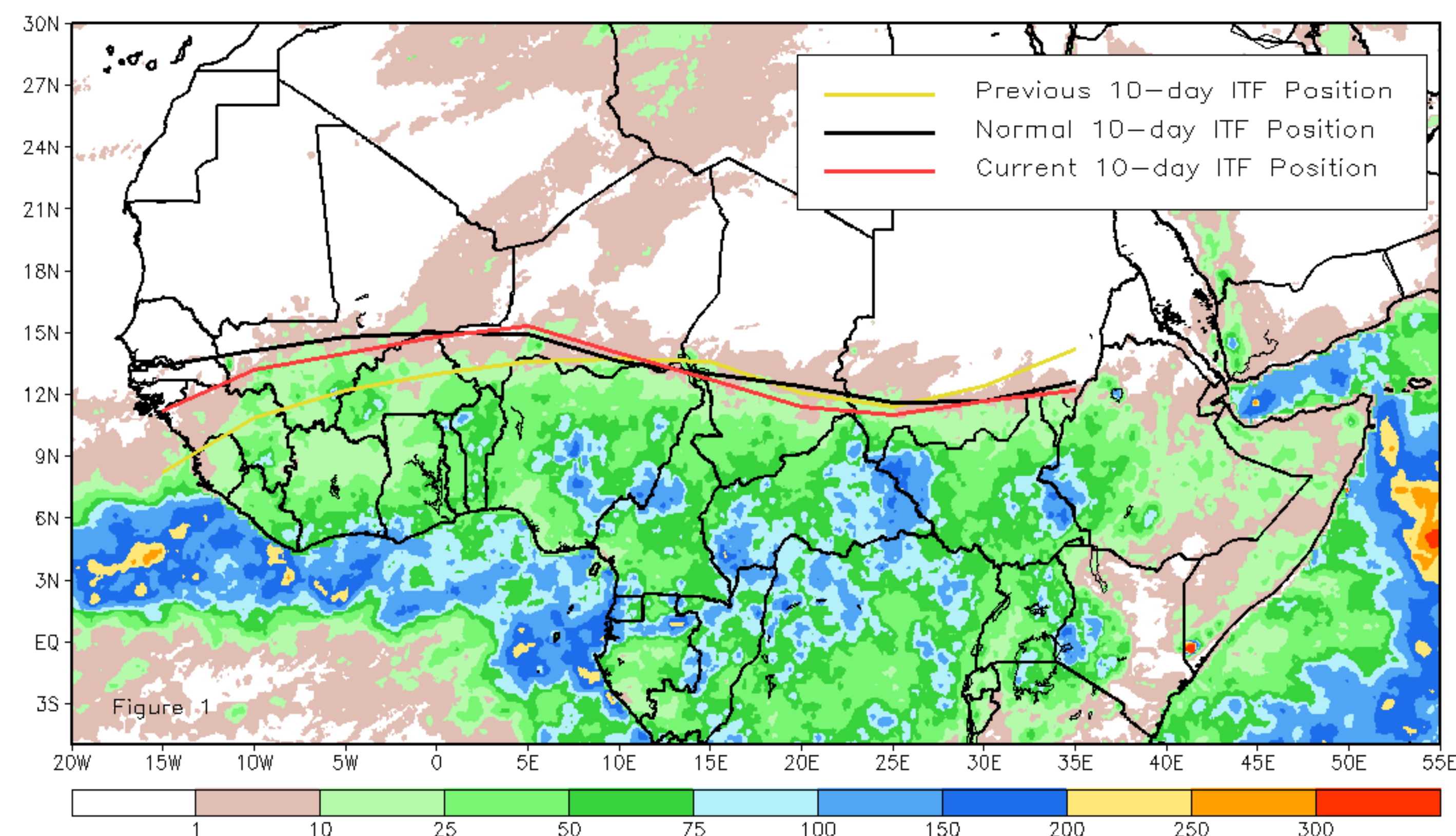
CPC Africa Desk InterTropical (ITF) Front Analysis

May 2018, Dekad 2

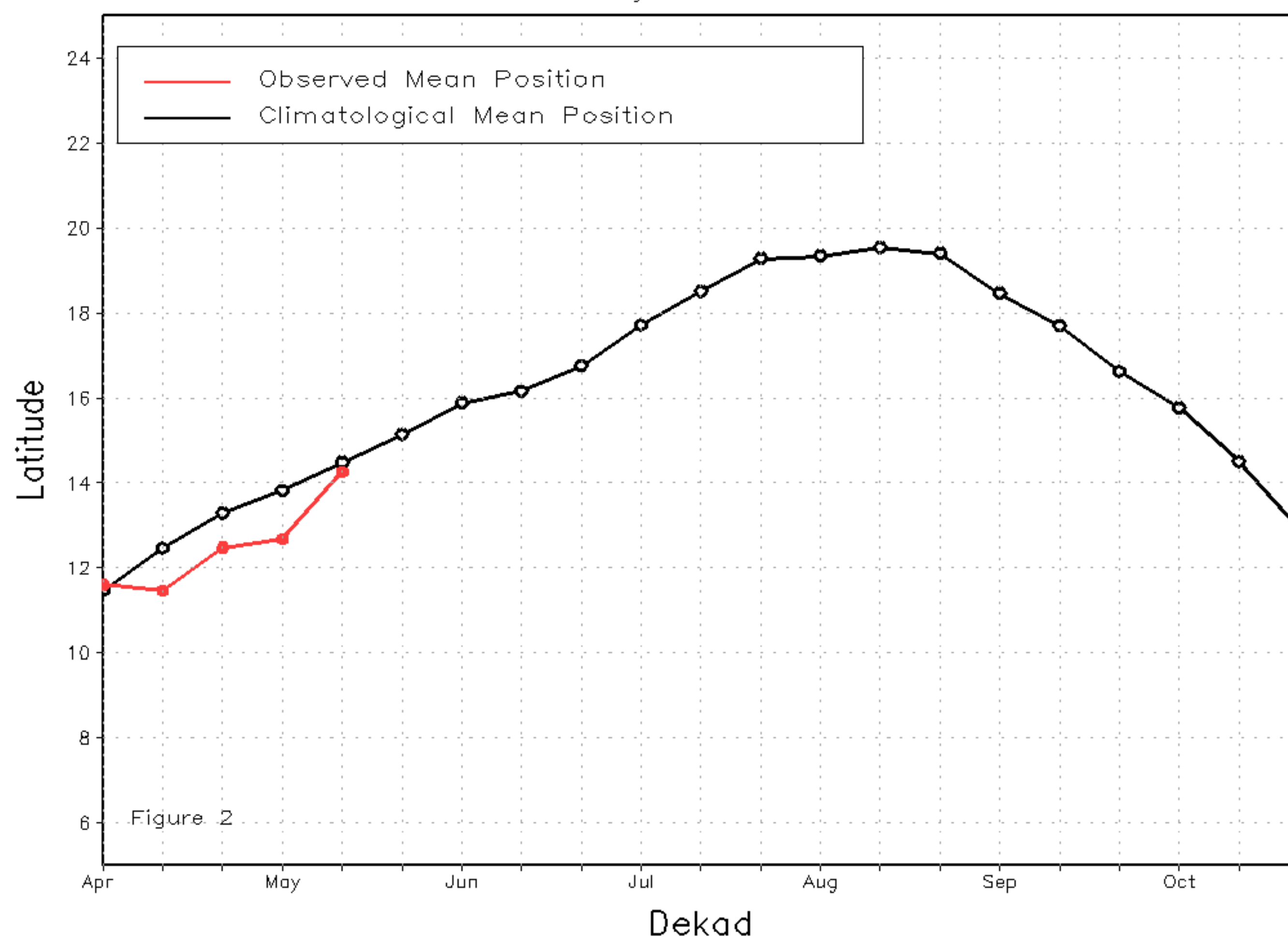
Discussion:

From May 11-20, the ITF experienced a northward advancement across West Africa, while it retreated slightly to the south across its eastern counterpart. The mean western (10W-10E) portion of the ITF was located at 14.3N and was to the south of both the mean (14.5N) position and last year (15.8N) location during this time of the year. The mean eastern (20E-35E) portion of the ITF was approximated at 11.6N, which also trailed both the long-term average (12.1N) and previous year (13.4N) positions. Figure 1 shows the current position of the ITF relative to the mean climatological position during the 2nd dekad of May and its previous position during the 1st dekad of May. Figures 2 and 3 are time series, illustrating the mean latitudinal values of the western and eastern portion of the ITF, respectively, and their seasonal evolutions compared to climatology since April, 2018.

Current vs. Normal Dekadal ITF Position
and RFE Accumulated Precipitation (mm)
May 2018, Dekad 2



Mean Western Portion of the ITF: Averaged 10W to 10E
As of: May 2018, Dekad 2



Mean Eastern Portion of the ITF: Averaged 20E to 35E
As of: May 2018, Dekad 2

