



CPC Africa Desk InterTropical (ITF) Front Analysis

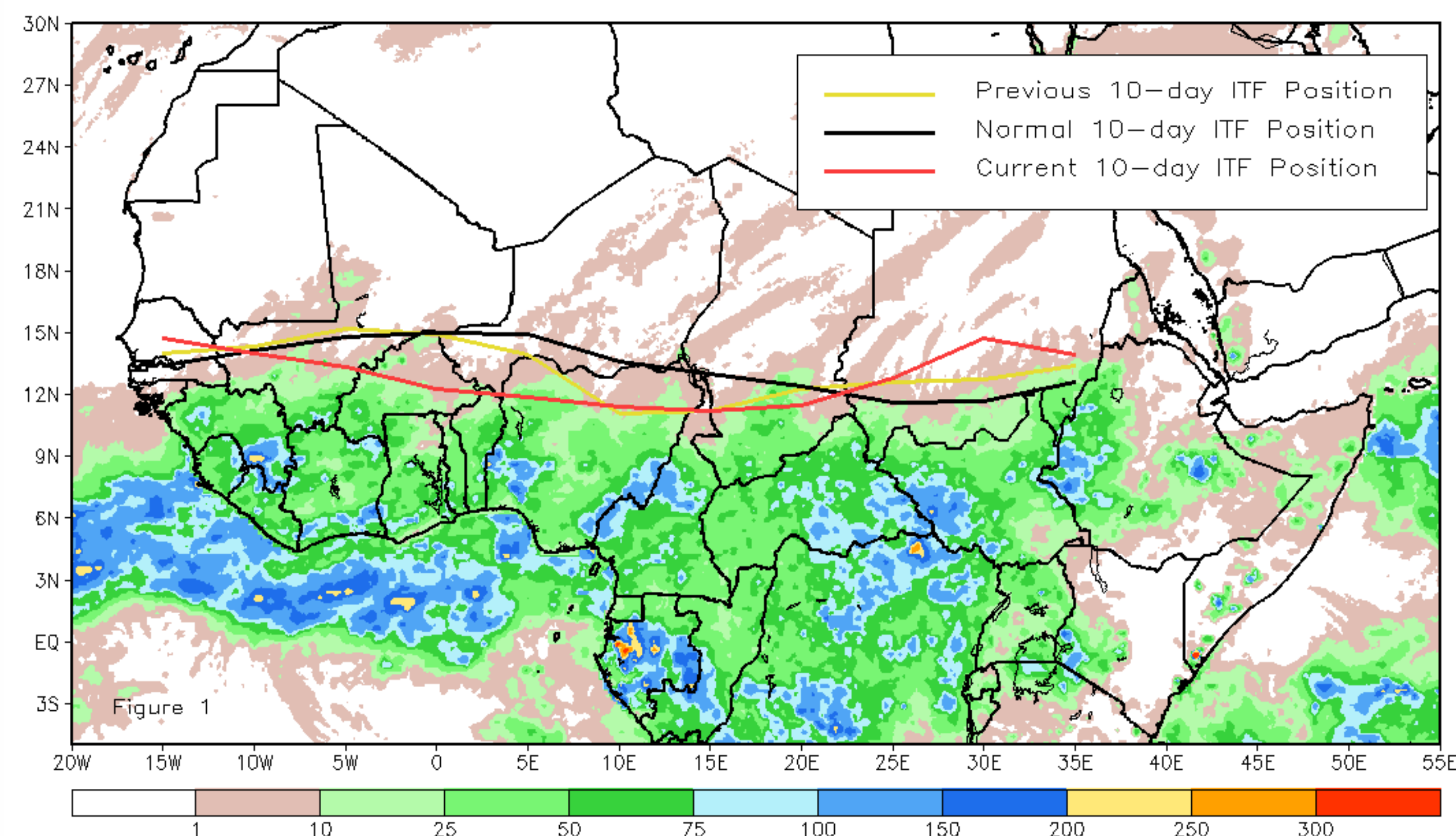
May 2015, Dekad 2

Discussion:

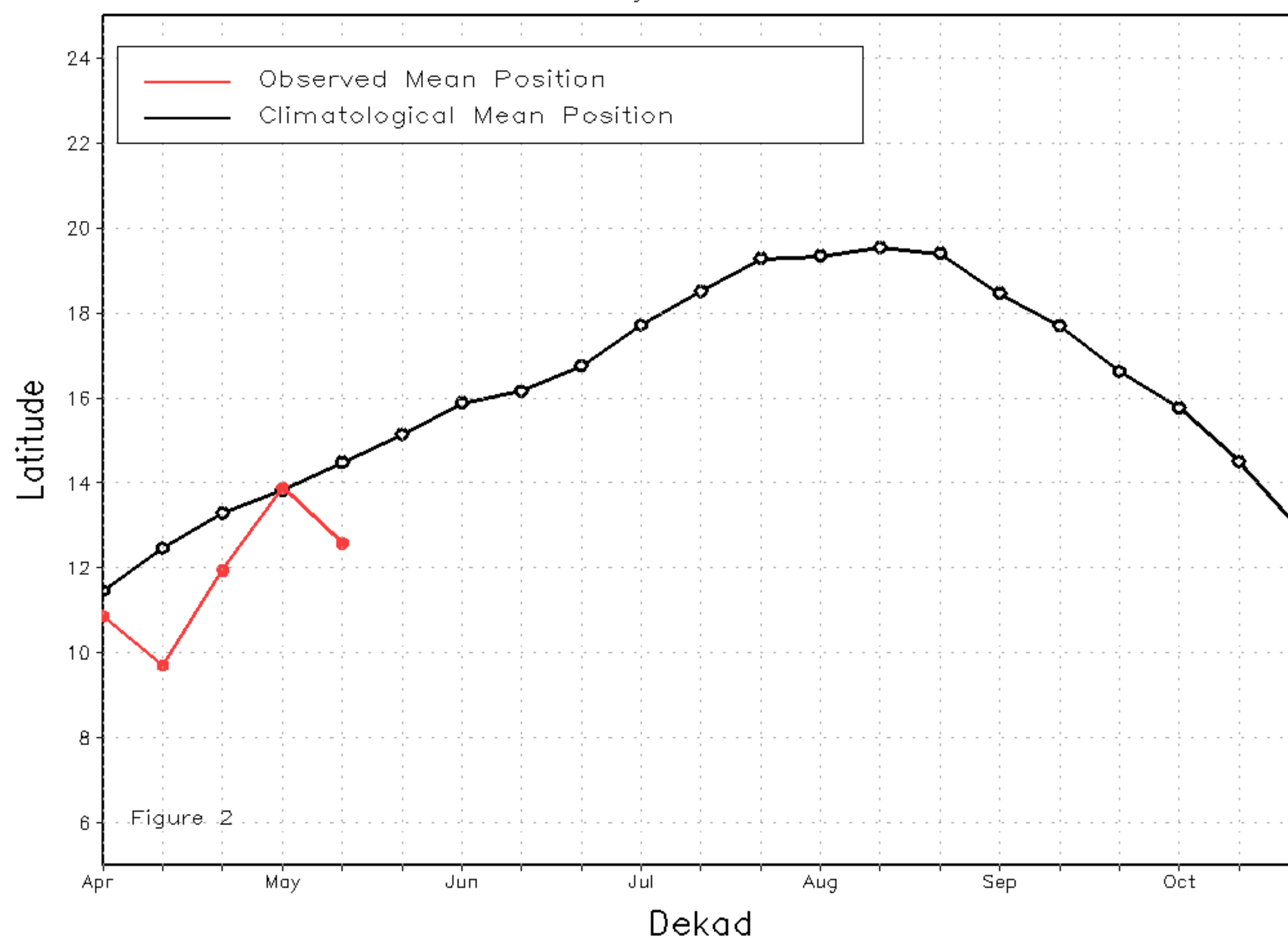
During the 2nd dekad of May, the ITF experienced little to no northward movement with much retreat towards eastern Africa compared to its position during early May. The western averaged (10W - 10E) latitudinal position of the ITF was approximated at 13.5 degrees North, nearly 1 degree below the climatological normal position during this time of year. The ITF was most lagged over portions of northern Nigeria and southern Niger where suppressed rainfall continues to persist. The mean eastern portion of the ITF was approximated at 11.4 degree North, and was much lower in latitude compared to both climatology and the previous dekadal position. Figure 1 shows the current position of the ITF relative to its climatological position during the second dekad of May and its previous position during the first dekad of May. Figures 2 and 3 are time series, illustrating the mean latitudinal values of the western and eastern portion of the ITF, respectively, and their evolutions since April, 2015.

Current vs. Normal Dekadal ITF Position
and RFE Accumulated Precipitation (mm)

May 2015, Dekad 2



Mean Western Portion of the ITF: Averaged 10W to 10E
As of: May 2015, Dekad 2



Mean Eastern Portion of the ITF: Averaged 20E to 35E
As of: May 2015, Dekad 2

