

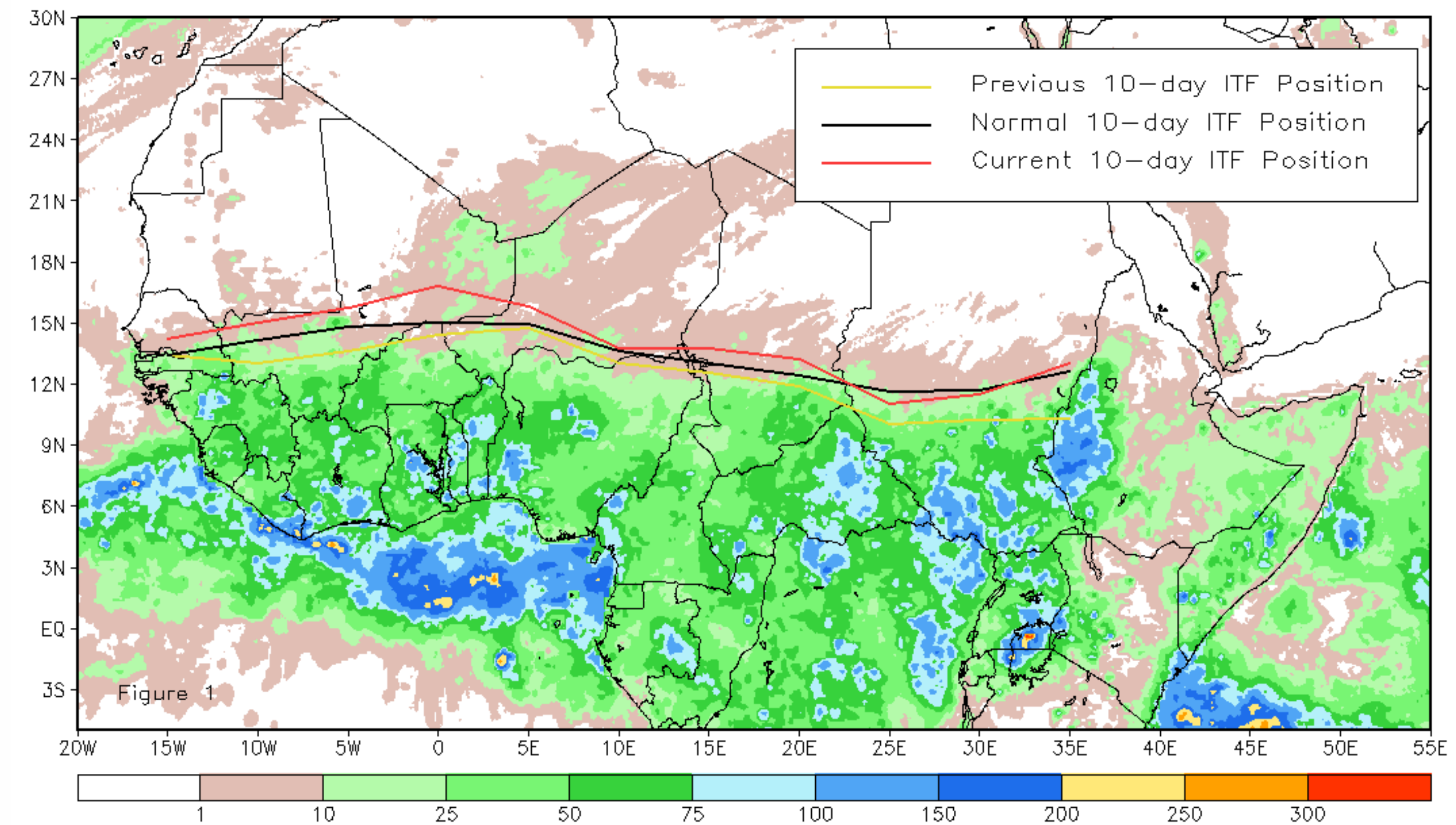


CPC Africa Desk InterTropical (ITF) Front Analysis May 2012, Dekad 2

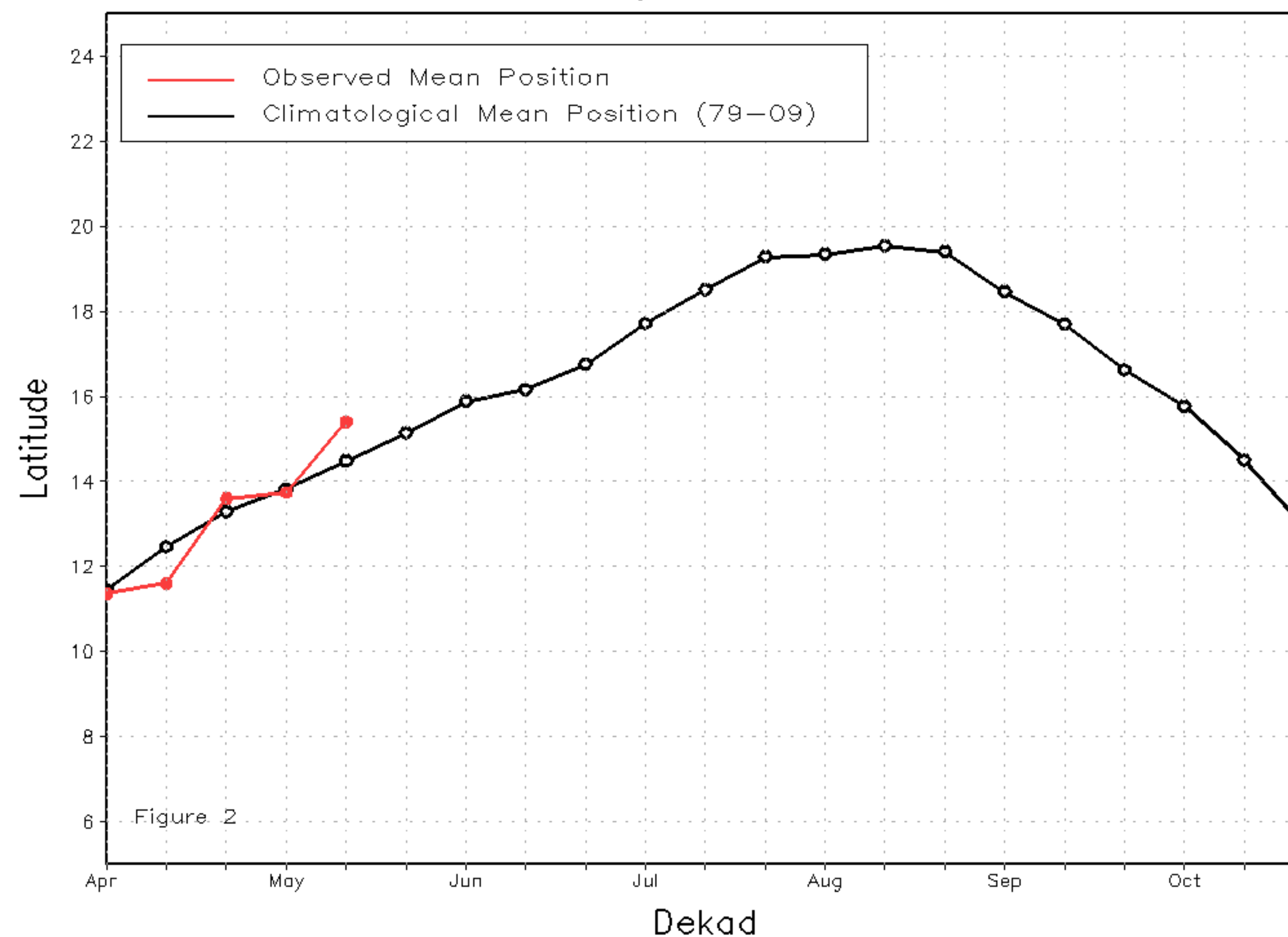
Discussion:

From May 11-20, 2012, the ITF shifted considerably northward across many portions West Africa, while returning towards a more normal position throughout the east. The mean western portion of the ITF was located at 15.4 degrees North, which is approximately 1 degree above its normal climatological position (14.5) for the middle of April. The anomalous position was associated with several days of strong, southerly flow extending from the Gulf of Guinea region to southern Algeria, resulting in moderate showers across parts of northern Mali and Niger. The mean eastern portion of the ITF was located at 12.2 during the second dekad of May, and showed much advancement compared to its previous position earlier in May. Its current near-normal position has resulted in increased, more seasonable rainfall across parts of South Sudan, Sudan and western Ethiopia. Figure 1 shows the current ITF position relative to the climatological average position for the second dekad of May and its previous position during the first dekad of May. Figures 2 and 3 are time series illustrating the latitudinal means of the western and eastern portions of the ITF, respectively, and their evolutions since the start of April, 2012.

Current vs. Normal Dekadal ITF Position
and RFE Accumulated Precipitation (mm)
May 2012, Dekad 2



Mean Western Portion of the ITF: Averaged 10W to 10E
As of: May 2012, Dekad 2



Mean Eastern Portion of the ITF: Averaged 20E to 35E
As of: May 2012, Dekad 2

