



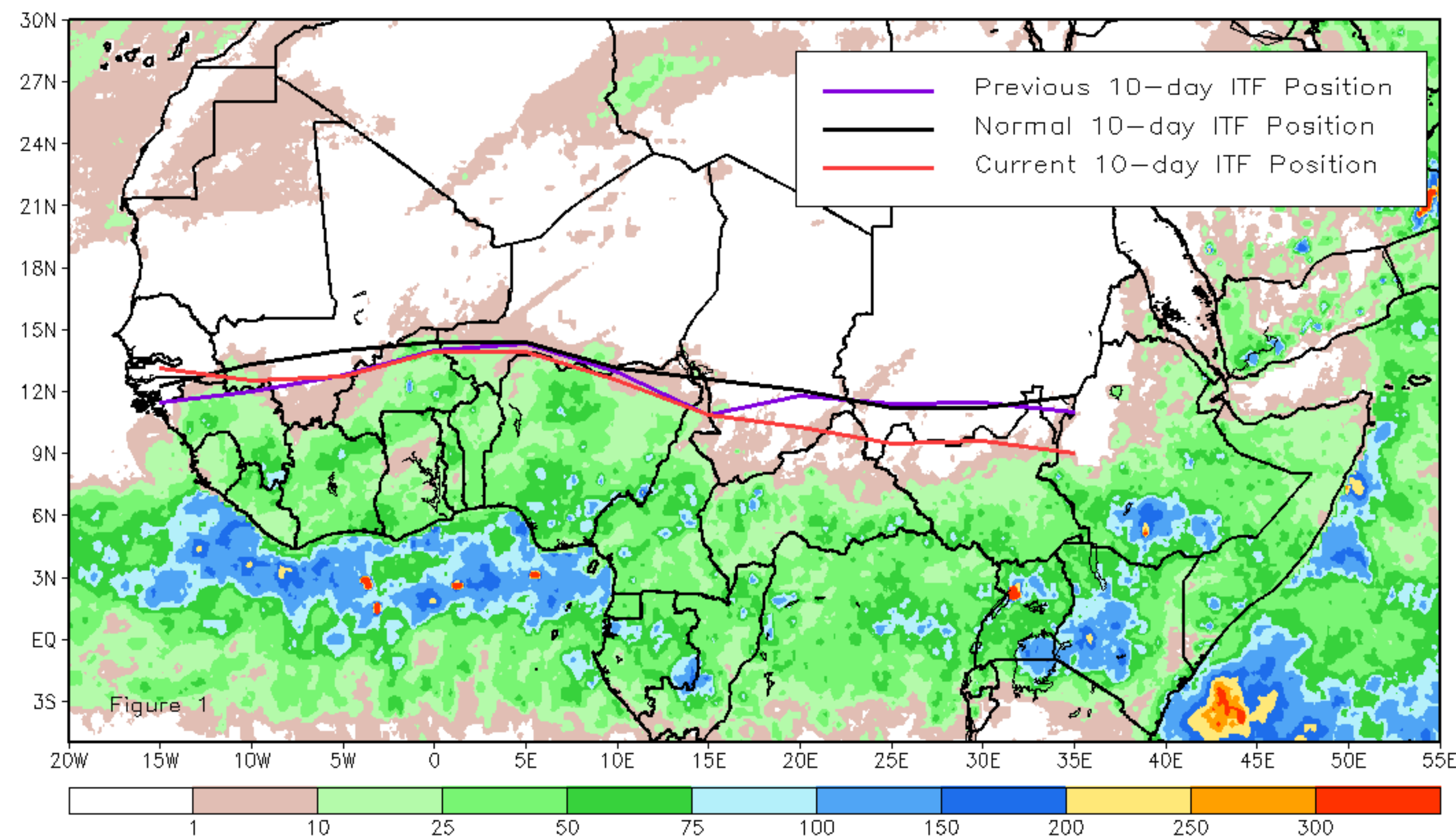
# CPC Africa Desk InterTropical (ITF) Front Analysis

## May 2024, Dekad 1

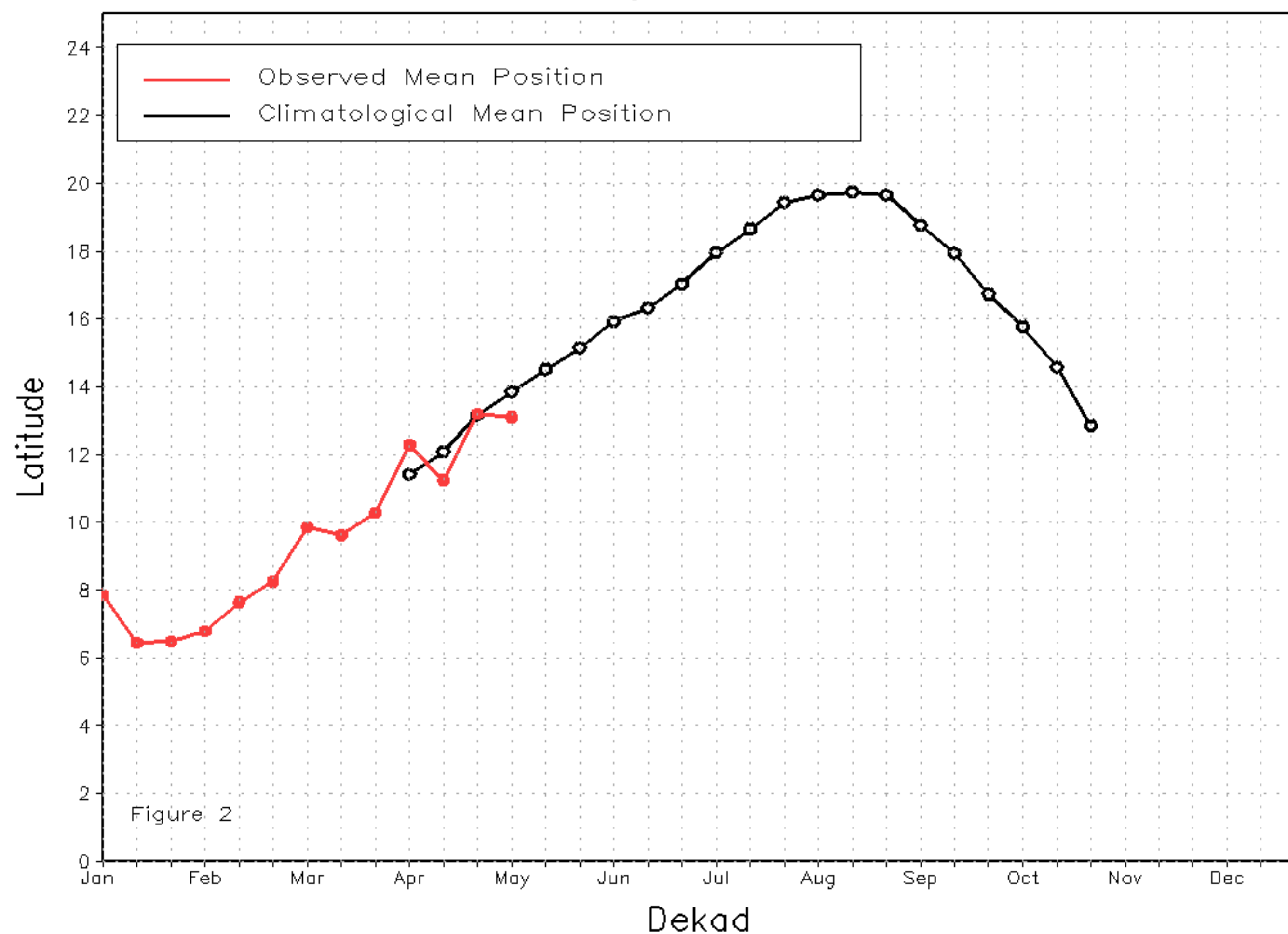
### Discussion:

From May 1-10, the Inter-Tropical Front (ITF) moved southward for most of its length, except at the western tip where it moved northward around Guinea. The western (10W-10E) portion of the ITF was located approximately at 13.1N, which was below the climatological position by 0.7 degree. Also, at the eastern (20E-35E) portion, the ITF was approximated at 9.6N, which was below the long-term average position by 2.0 degrees. Figure 1 displays the current position of the ITF relative to the climatological position during the 1st dekad of May and its previous position during the 3rd dekad of April. Figures 2 and 3 are time series, illustrating the latitudinal positions for the western and eastern portions of the ITF, respectively, and their seasonal evolutions since the beginning of April 2024.

Current vs. Normal Dekadal ITF Position  
and RFE Accumulated Precipitation (mm)  
May 2024, Dekad 1



Mean Western Portion of the ITF: Averaged 10W to 10E  
As of: May 2024, Dekad 1



Mean Eastern Portion of the ITF: Averaged 20E to 35E  
As of: May 2024, Dekad 1

