



CPC Africa Desk InterTropical (ITF) Front Analysis

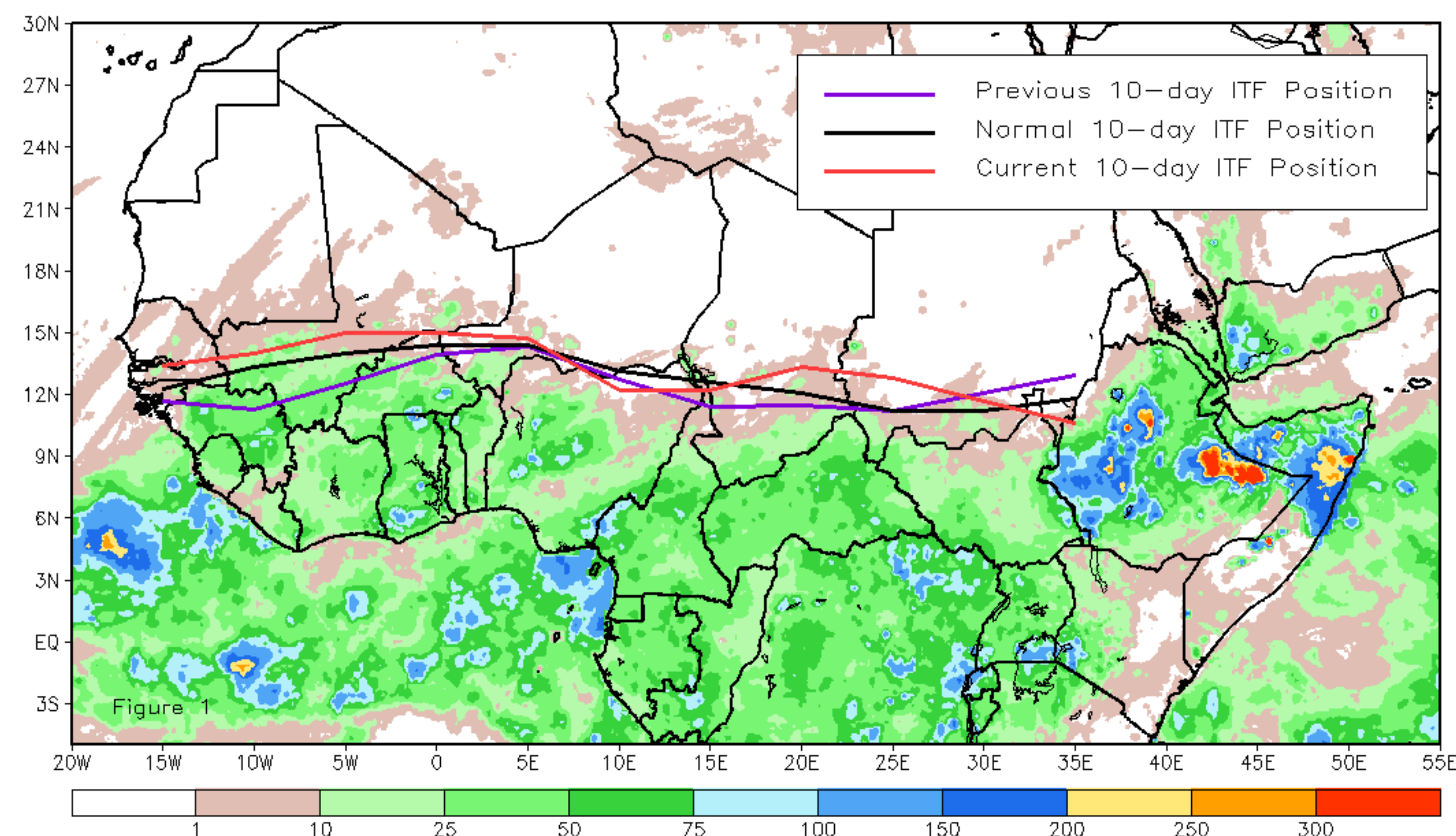
May 2023, Dekad 1

Discussion:

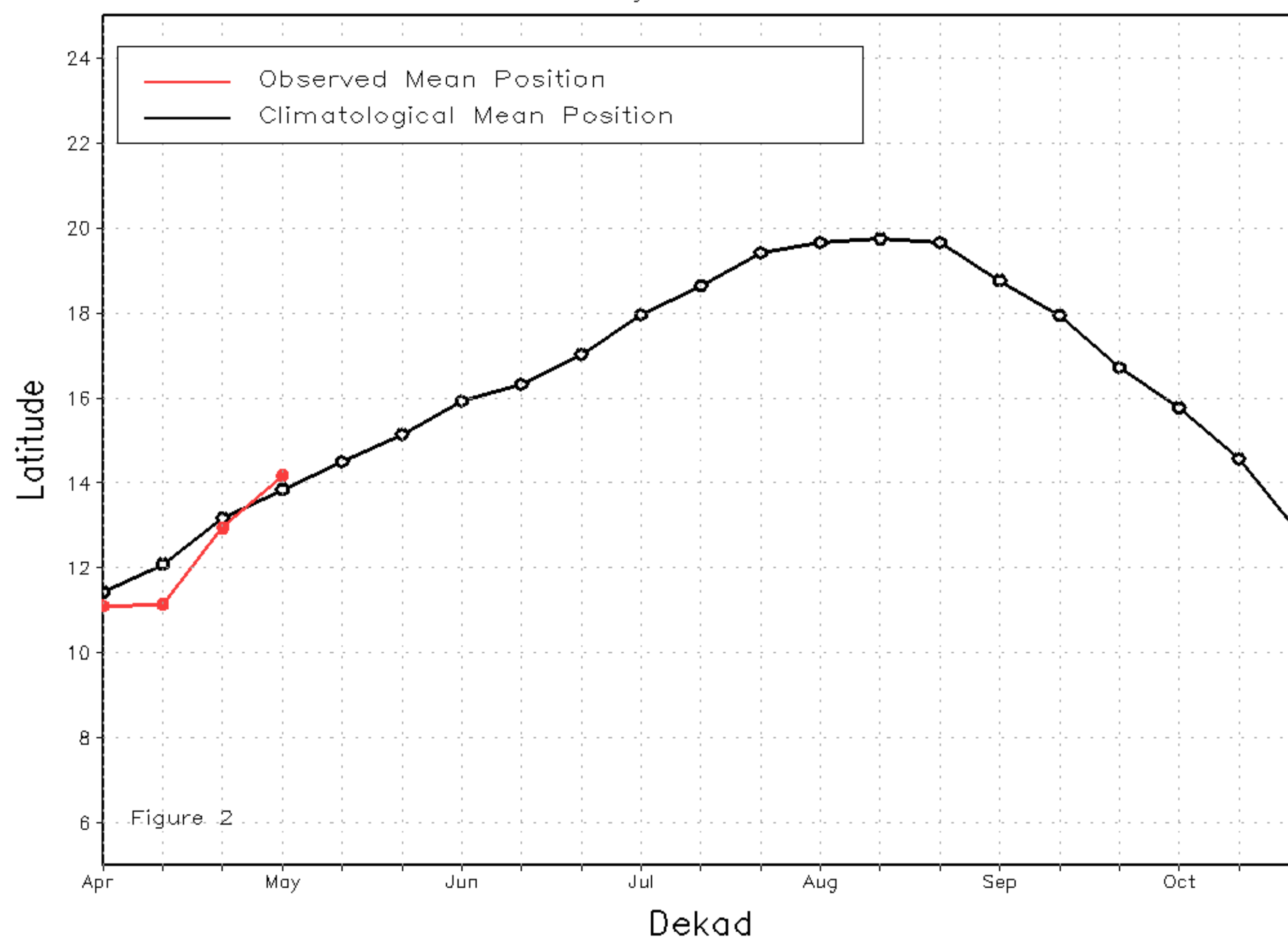
From 1-10 May, the ITF propagated farther north relative to its previous position. However, the ITF lagged slightly behind the long-term average between longitude 5E-15E. The western (10W-10E) portion of the ITF was located approximately at 14.2N, which was above the climatological position by 0.4 degree. Also, at the eastern (20E-35E) portion, the ITF was approximated at 12.1N, which was above the long-term average position by 0.5 degree. Figure 1 displays the current position of the ITF relative to the climatological position during the 1st dekad of May and its previous position during the 3rd dekad of April. Figures 2 and 3 are time series, illustrating the latitudinal positions for the western and eastern portions of the ITF, respectively, and their seasonal evolutions since the beginning of April 2023.

Current vs. Normal Dekadal ITF Position
and RFE Accumulated Precipitation (mm)

May 2023, Dekad 1



Mean Western Portion of the ITF: Averaged 10W to 10E
As of: May 2023, Dekad 1



Mean Eastern Portion of the ITF: Averaged 20E to 35E
As of: May 2023, Dekad 1

