



# CPC Africa Desk InterTropical (ITF) Front Analysis

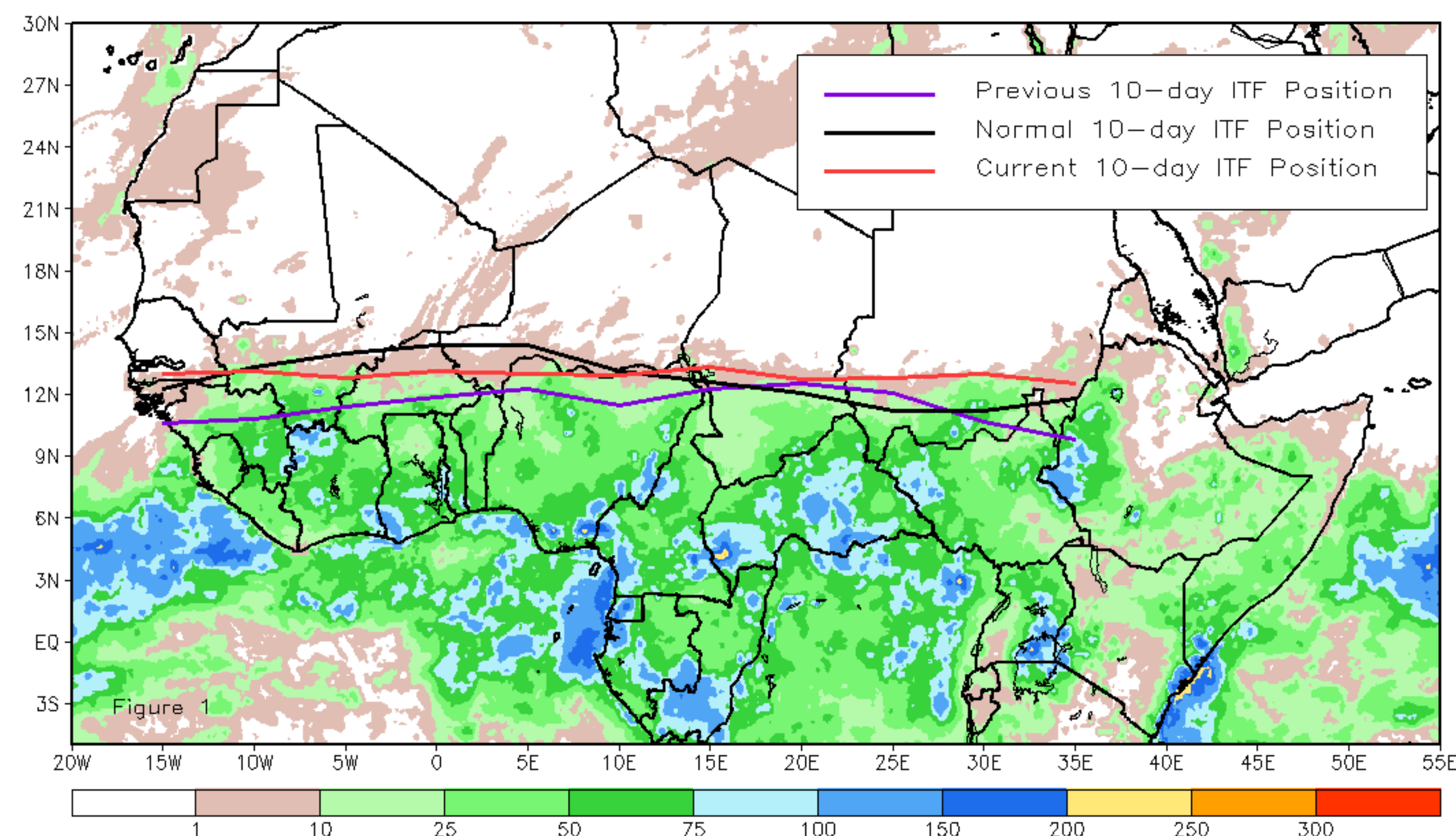
## May 2022, Dekad 1

### Discussion:

From 1-10 May, the ITF moved north relative to its previous position, which resulted in an overall anomalous southerly and anomalous northerly position, over the west and eastern portion, respectively. The western (10W-10E) portion of the ITF was located approximately at 13.0N, which was below the climatology position by 0.8 degree. The eastern (20E-35E) portion of the ITF was approximated at 13.1N, which was above the climatological position by 1.5 degrees. Figure 1 displays the current position of the ITF relative to the long-term average position during the 1st dekad of May and its previous position during the 3rd dekad of April. Figures 2 and 3 are time series, illustrating the latitudinal values of the western and eastern portions of the ITF, respectively, and their seasonal evolutions since the beginning of April, 2022.

Current vs. Normal Dekadal ITF Position  
and RFE Accumulated Precipitation (mm)

May 2022, Dekad 1



Mean Western Portion of the ITF: Averaged 10W to 10E  
As of: May 2022, Dekad 1

