



# CPC Africa Desk InterTropical (ITF) Front Analysis

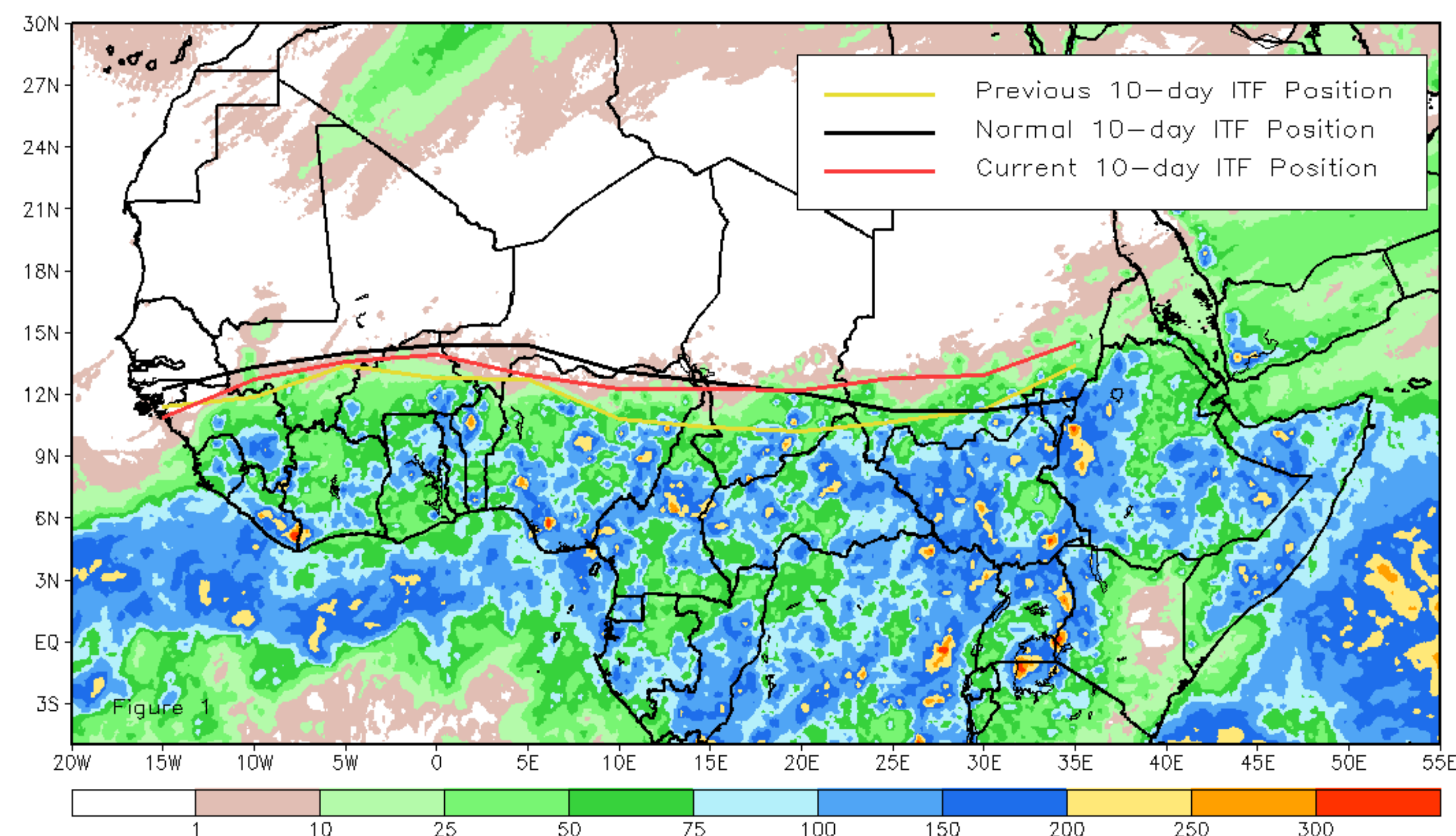
## May 2021, Dekad 1

### Discussion:

From 1-10 May, the ITF moved farther north relative to its position during the previous dekad across Africa. However, the ITF lied to the south of the average position along the western segment, whereas it advanced to the north of the mean position along its eastern counterpart. The mean western (10W-10E) portion of the ITF was approximated at 13.1N and was anomalously south of the climatological position by 0.7 degree. This below-average position might have contributed to the observed drier-than-average conditions along portions of the Gulf of Guinea. In contrast, the mean eastern (20E-35E) portion of the ITF was averaged at 13.1N but was located to the north of the long-term mean by 1.6 degrees. The continued above-average position could explain the observed consistent, wetness over parts of Sudan and South Sudan. Figure 1 shows the current position of the ITF relative to the long-term average position during the 1st dekad of May and its previous position during the 3rd dekad of April. Figures 2 and 3 are time series, illustrating the latitudinal values of the western and eastern portions of the ITF, respectively, and their seasonal evolutions since the beginning of April, 2021.

Current vs. Normal Dekadal ITF Position  
and RFE Accumulated Precipitation (mm)

May 2021, Dekad 1



Mean Western Portion of the ITF: Averaged 10W to 10E  
As of: May 2021, Dekad 1

