



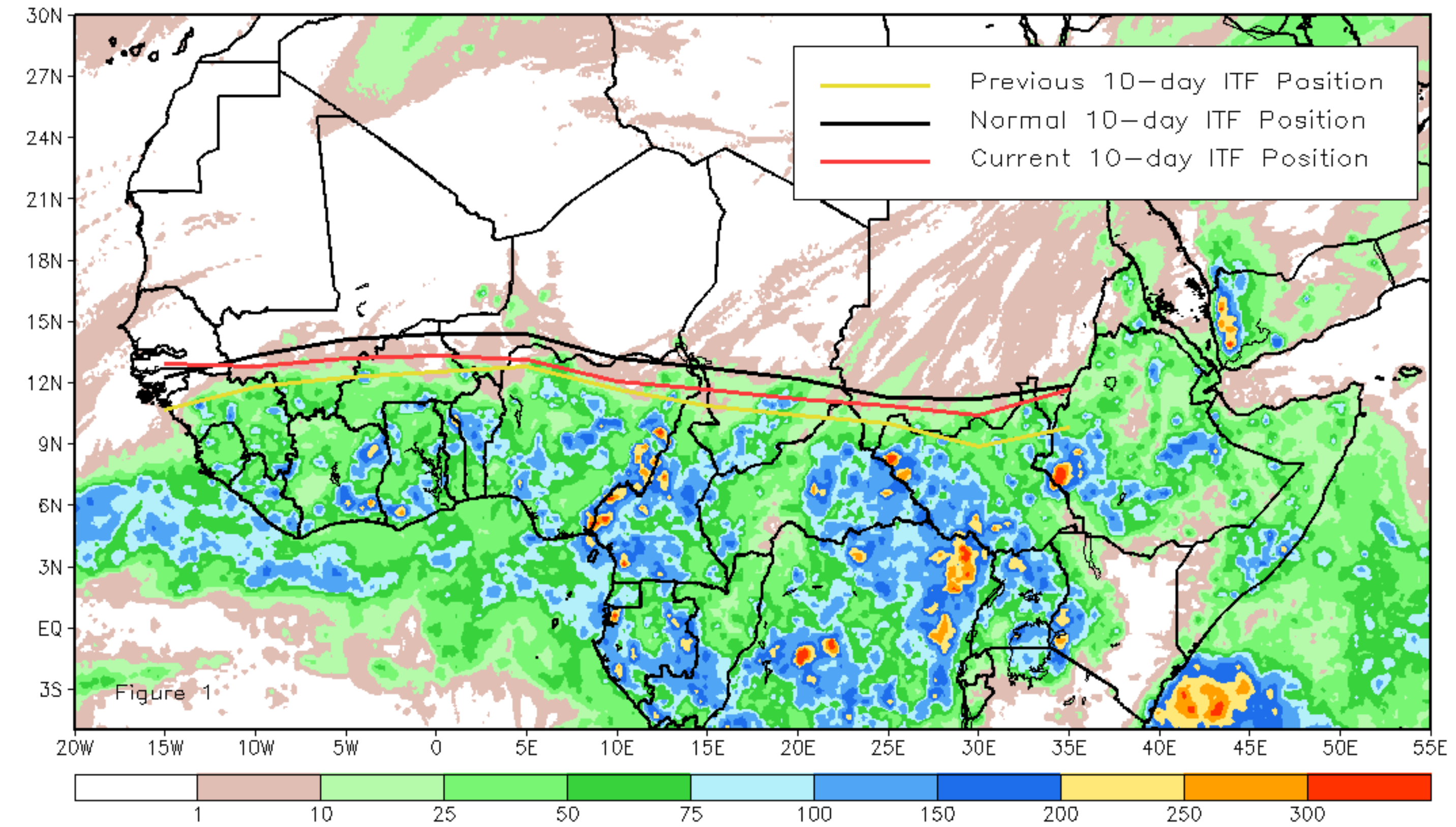
CPC Africa Desk InterTropical (ITF) Front Analysis

May 2020, Dekad 1

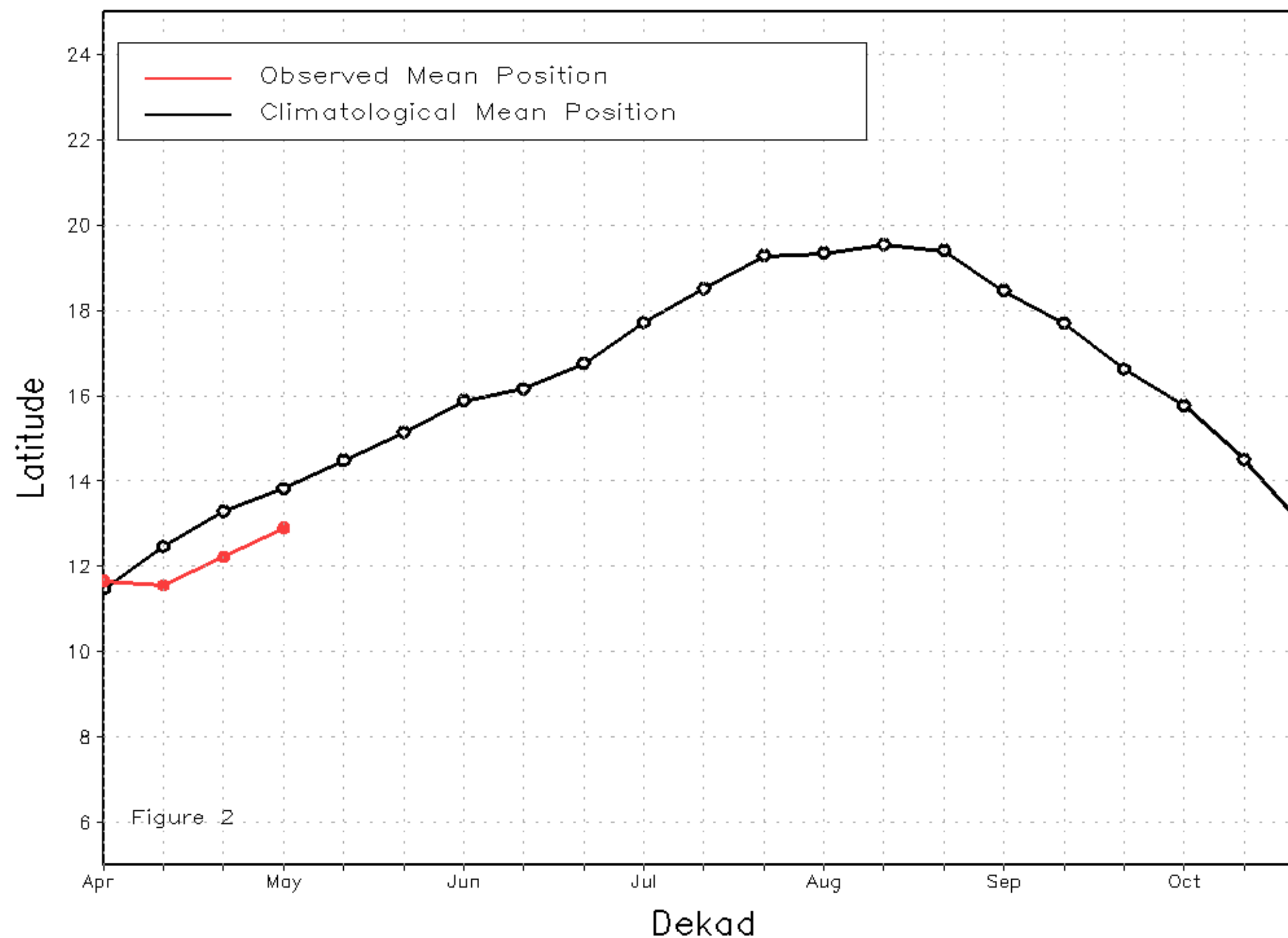
Discussion:

From May 1-10, the ITF experienced a sluggish movement to the north. The ITF position remained below and to the south of the long-term average position during this time of the year. The mean western (10W-10E) portion of the ITF was approximated at 12.9N, which was anomalously south of the average position by 1 degree. The mean eastern (20E-35E) portion of the ITF was located at 11.1N, which lagged the long-term mean position by 0.5 degree. Figure 1 displays the current position of the ITF relative to the long-term climatological position during the 1st dekad of May and its previous position during the 3rd dekad of April. Figures 2 and 3 are time series, illustrating the latitudinal values of the western and eastern portions of the ITF, respectively, and their seasonal evolutions since April, 2020.

Current vs. Normal Dekadal ITF Position
and RFE Accumulated Precipitation (mm)
May 2020, Dekad 1



Mean Western Portion of the ITF: Averaged 10W to 10E
As of: May 2020, Dekad 1



Mean Eastern Portion of the ITF: Averaged 20E to 35E
As of: May 2020, Dekad 1

