



CPC Africa Desk InterTropical (ITF) Front Analysis

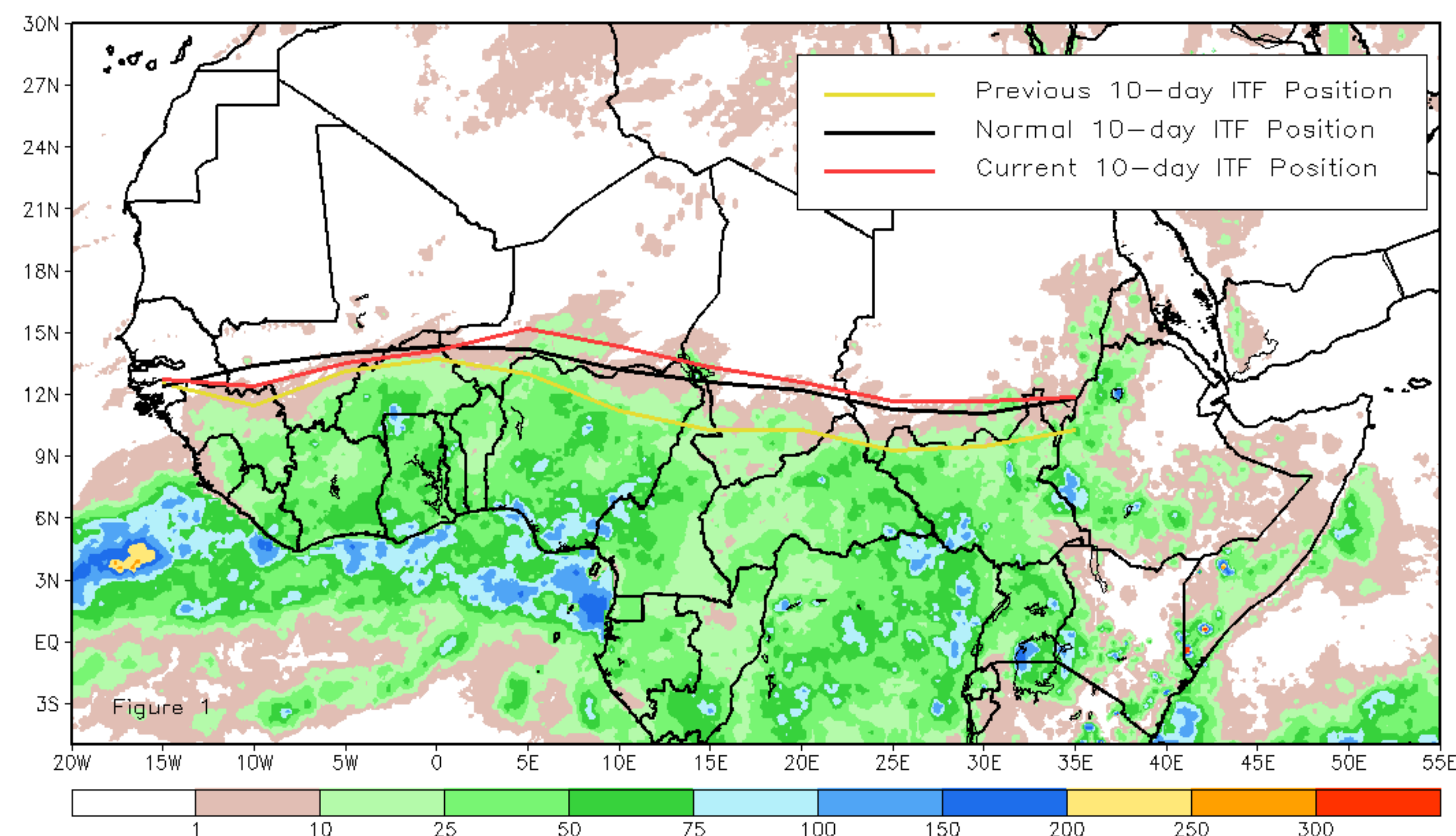
May 2019, Dekad 1

Discussion:

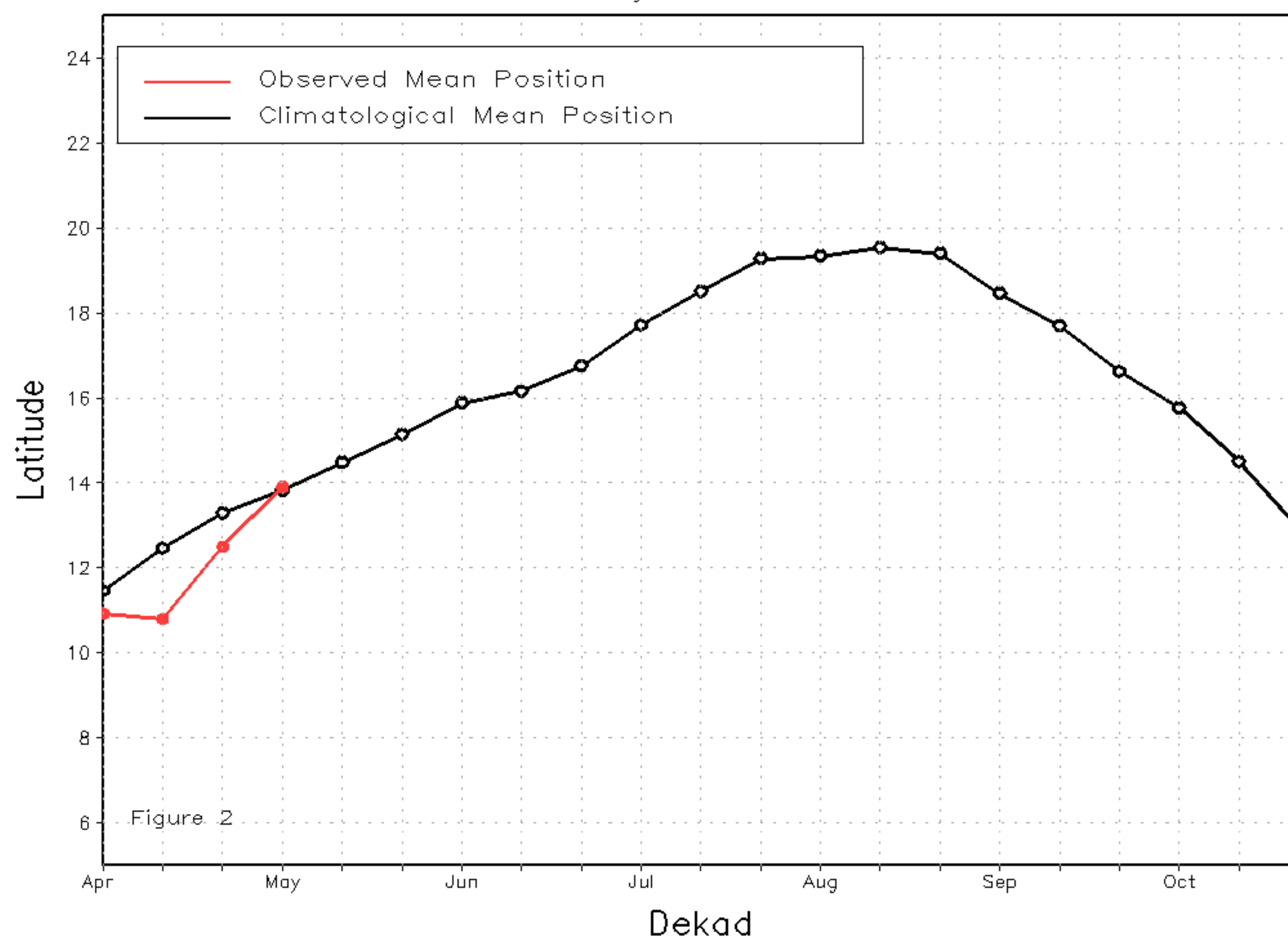
From May 1-10, the ITF continued its northward movement across Africa compared to its position during the previous period. While parts of the ITF slightly lagged behind the long-term average position over portions of West Africa, it led the latter throughout its central and eastern counterparts. Nonetheless, the mean western (10W-10E) position was located at 13.9N, which was to the north of the mean position by 0.1 degree. This anomalously north position may explain the observed, above-average rainfall over eastern Cote d'Ivoire, Burkina Faso, Ghana, Togo, Benin, southern Chad, and western Nigeria during the period. Similarly, the mean eastern (20E-35E) portion of the ITF was approximated at 12N, which was north of the average position during this time of the year by 0.4 degree. This may be responsible for above-average rainfall, received over much of South Sudan during the 10-day period. Figure 1 shows the current position of the ITF relative to the climatological position during the 1st dekad of May and its previous position during the 3rd dekad of April. Figures 2 and 3 are time series, illustrating the latitudinal values of the western and eastern portions of the ITF, respectively, and their seasonal evolutions since April, 2019.

Current vs. Normal Dekadal ITF Position
and RFE Accumulated Precipitation (mm)

May 2019, Dekad 1



Mean Western Portion of the ITF: Averaged 10W to 10E
As of: May 2019, Dekad 1



Mean Eastern Portion of the ITF: Averaged 20E to 35E
As of: May 2019, Dekad 1

