



CPC Africa Desk InterTropical (ITF) Front Analysis

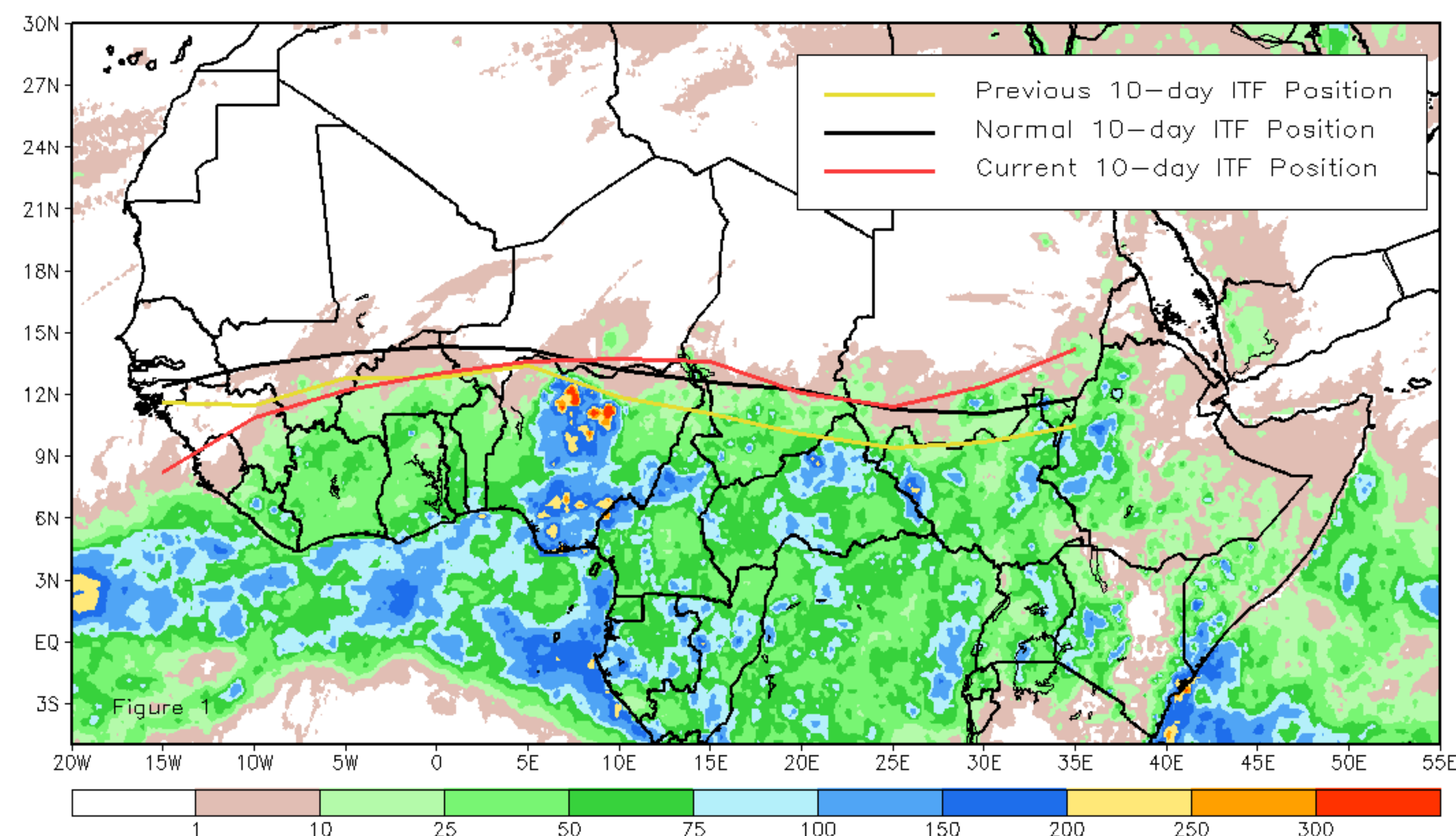
May 2018, Dekad 1

Discussion:

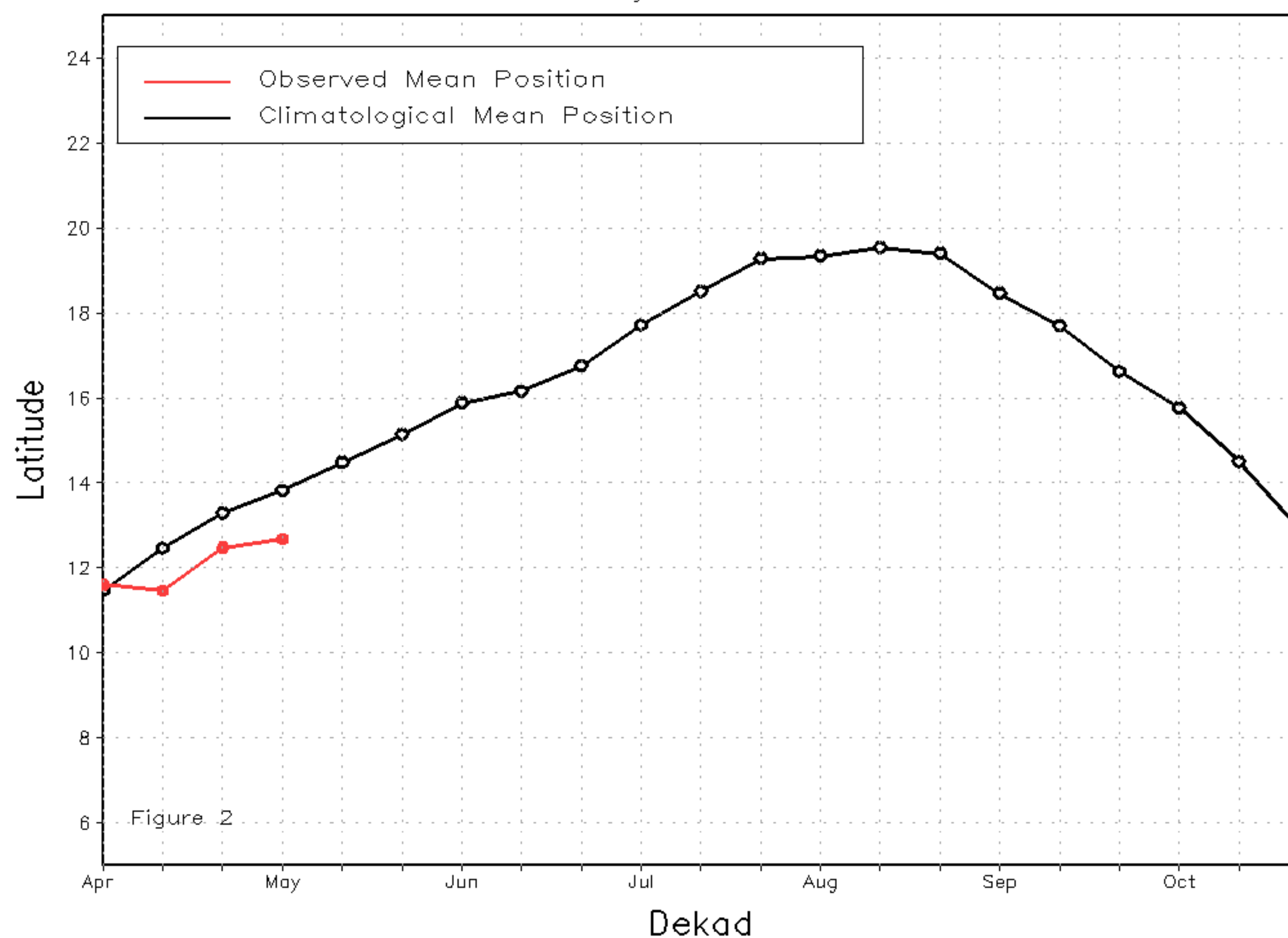
From May 1-10, the ITF remained quasi-stationary across West Africa, while it advanced farther north across its eastern counterpart. The mean western (10W-10E) portion of the ITF was averaged at 12.7N, which was to the south of the long-term average position by 1.1 degrees. This anomalous southward deflection of the ITF resulted in below-average rain over some far western West Africa and Gulf of Guinea countries. In contrast, the mean eastern (20E-35E) portion of the ITF was located at 12.5N and was positioned to the north of the climatological position by 0.9 degree. This anomalous northerly position brought above-average rain over portions of southern Sudan. Figure 1 shows the current position of the ITF relative to the mean climatological position during the 1st dekad of May and its previous position during the 3rd dekad of April. Figures 2 and 3 are time series, illustrating the mean latitudinal values of the western and eastern portion of the ITF, respectively, and their seasonal evolutions compared to climatology since April, 2018.

Current vs. Normal Dekadal ITF Position
and RFE Accumulated Precipitation (mm)

May 2018, Dekad 1



Mean Western Portion of the ITF: Averaged 10W to 10E
As of: May 2018, Dekad 1



Mean Eastern Portion of the ITF: Averaged 20E to 35E
As of: May 2018, Dekad 1

