



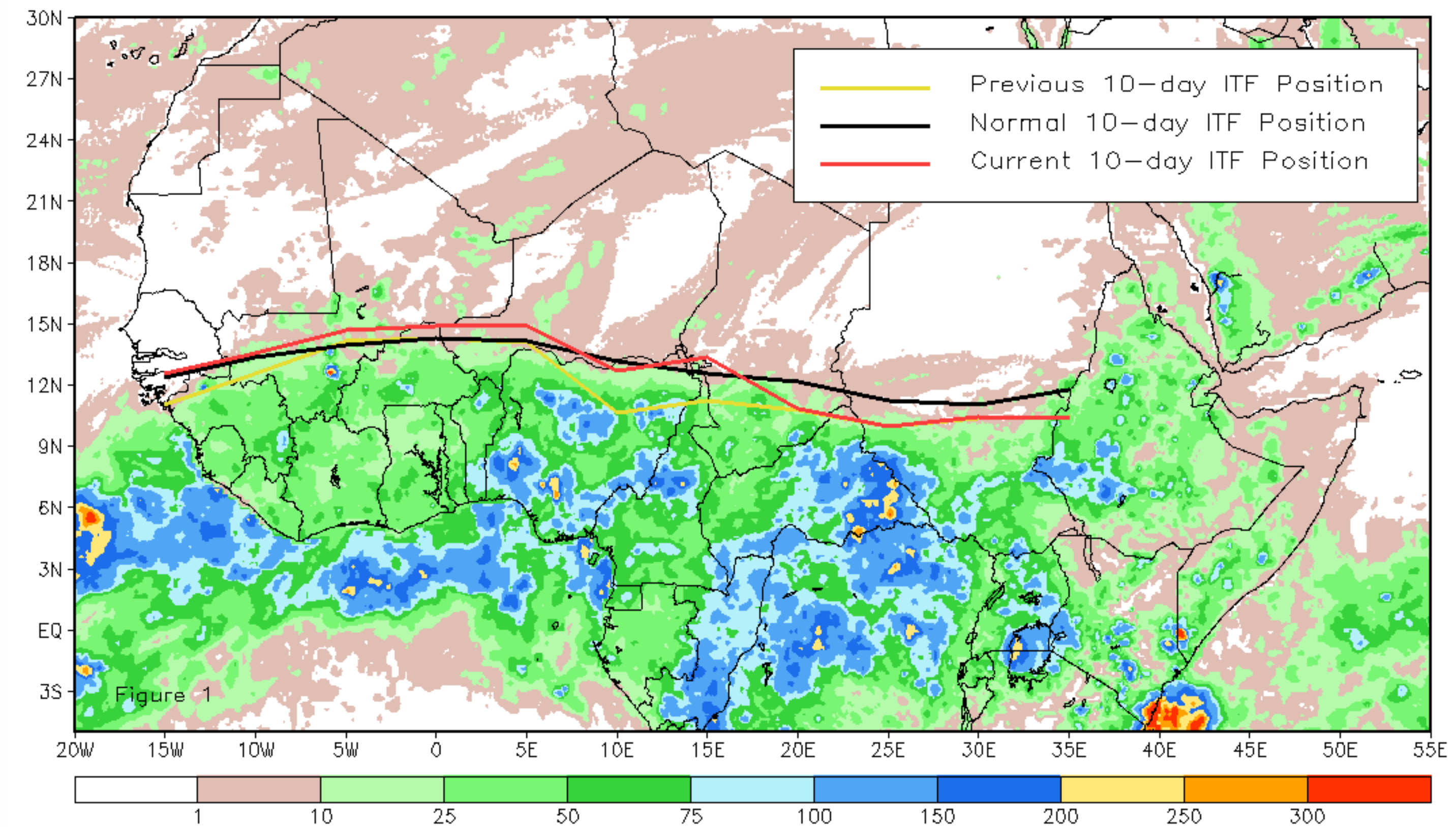
CPC Africa Desk InterTropical (ITF) Front Analysis

May 2017, Dekad 1

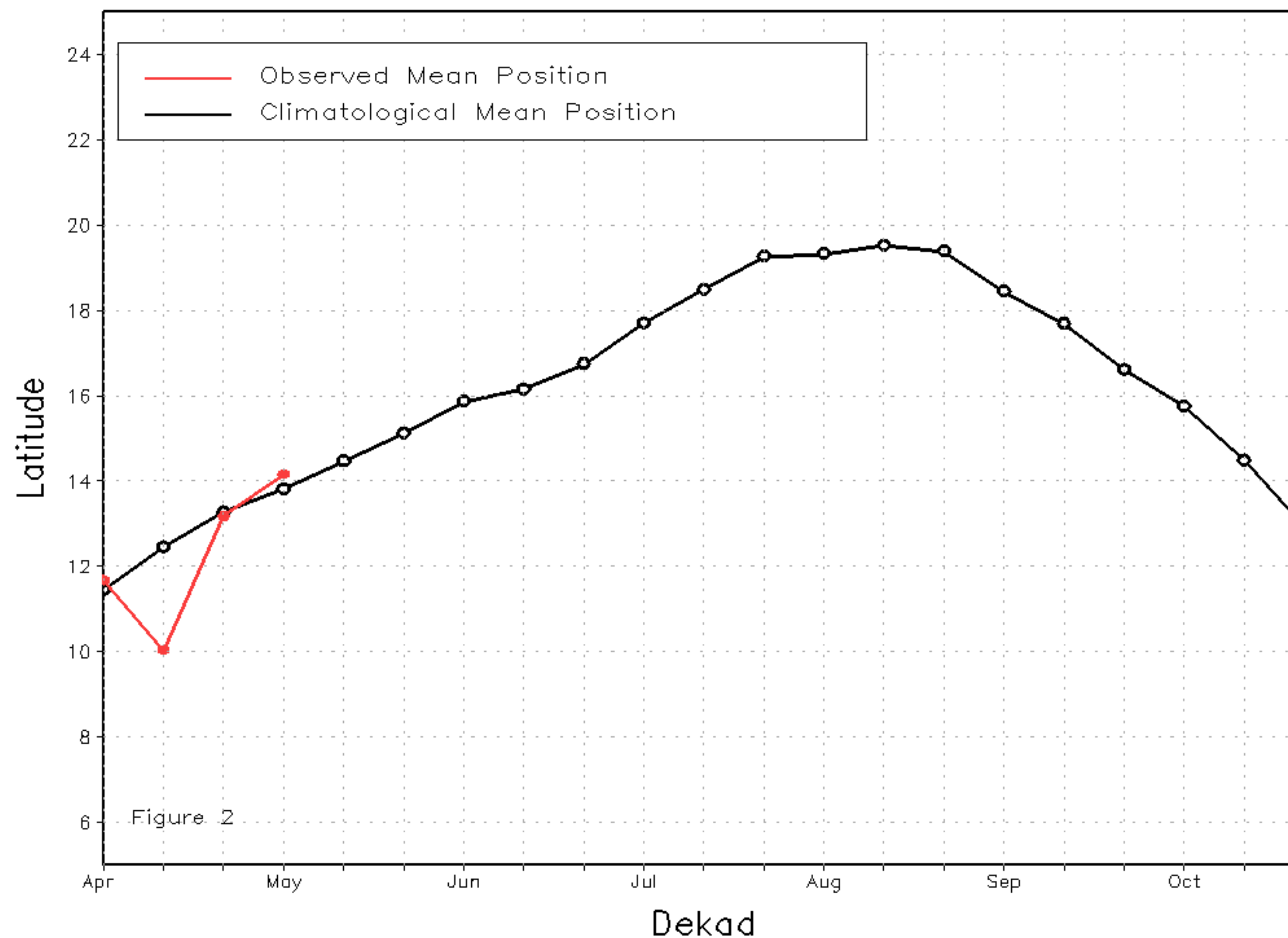
Discussion:

During the first dekad of May (May 1-10), the ITF experienced a small shift northward in the west, while maintaining a general position close to that of climatology. The mean western portion of the ITF (10W-10E) was approximated at 14.2N, now located slightly above the climatological normal position (13.8N) for the beginning of April and 1 degree north of its previous mean position (13.2). Incremental northward movement of the ITF has allowed for typical northward expansion of rains, though they are generally light. The mean eastern portion of the ITF (20E-35E) was approximated at 10.4N, identical to its mean position last dekad. It climatological position during the 1st dekad of May. Figures 2 and 3 are time series illustrating the mean latitudinal values of the western and eastern portions of the ITF, respectively, and their seasonal evolutions since the start of April, 2017.

Current vs. Normal Dekadal ITF Position
and RFE Accumulated Precipitation (mm)
May 2017, Dekad 1



Mean Western Portion of the ITF: Averaged 10W to 10E
As of: May 2017, Dekad 1



Mean Eastern Portion of the ITF: Averaged 20E to 35E
As of: May 2017, Dekad 1

