



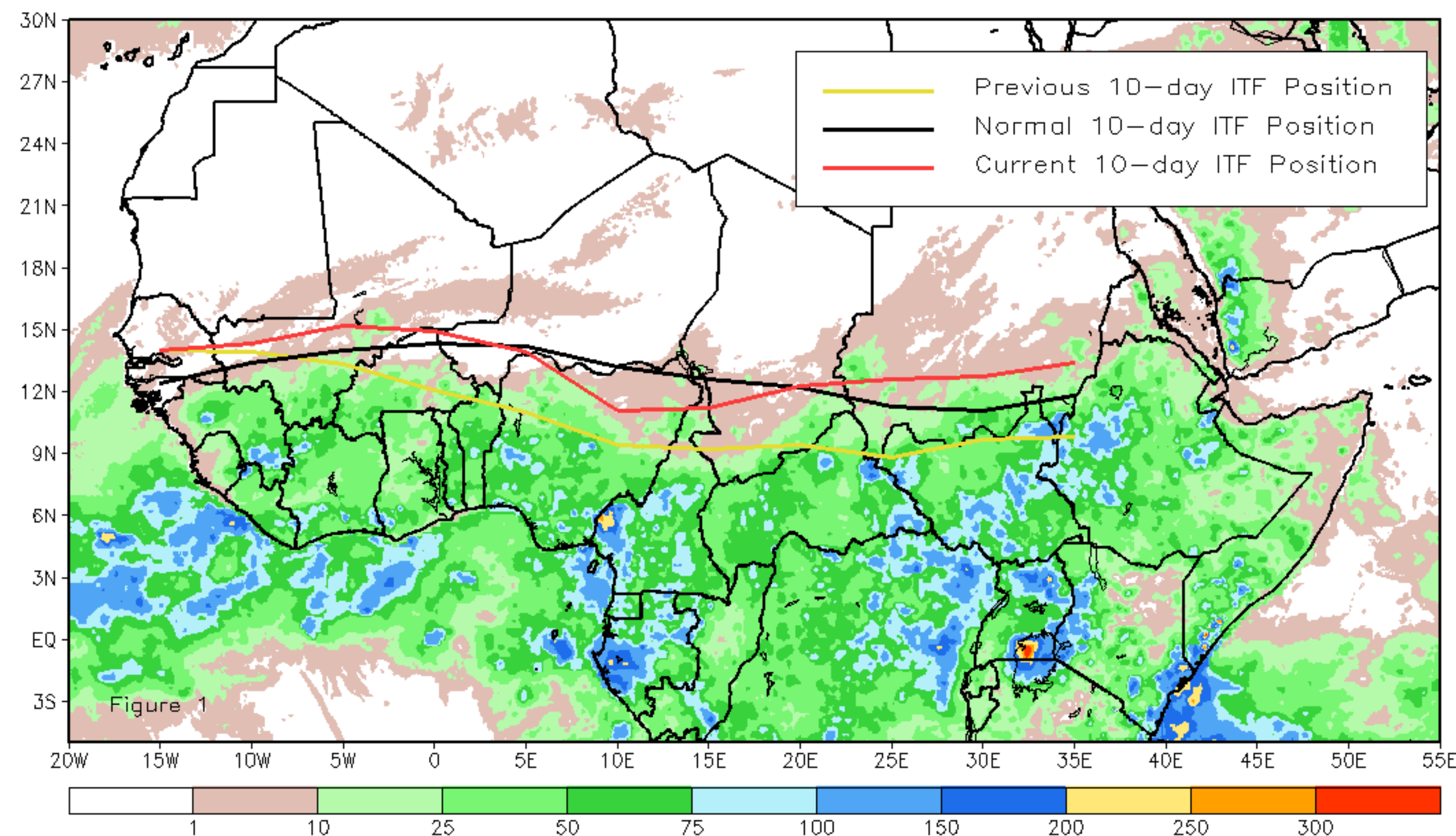
CPC Africa Desk InterTropical (ITF) Front Analysis

May 2015, Dekad 1

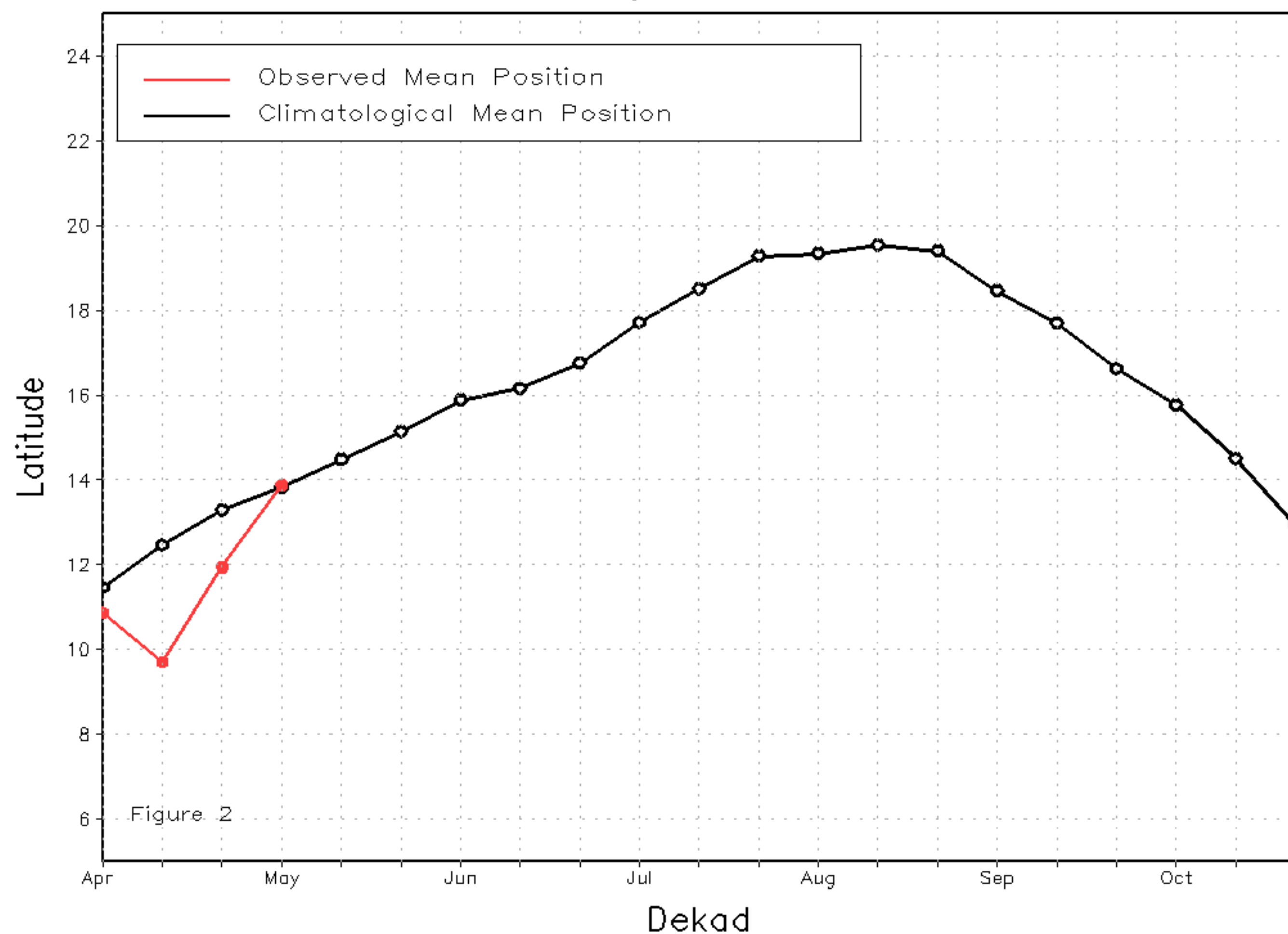
Discussion:

During the 1st dekad of May, the ITF experienced a considerable northward advancement compared to its previous position during late April. The western averaged latitudinal position of the ITF (10W - 10E) was approximated at 13.9 degrees North, slightly above the climatological normal position (13.8N), although much lagging was still observed over parts of northern Nigeria and Cameroon. The mean eastern portion of the ITF was approximated at 12.8 degrees North. Since the middle of April, the mean eastern position of the ITF has rapidly advanced, and has now surpassed the climatological normal position by over 1 degree in latitude. Figure 1 shows the current position of the ITF relative to its climatological position during the first dekad of May and its previous position during the third dekad of April. Figures 2 and 3 are time series, illustrating the mean latitudinal values of the western and eastern portion of the ITF, respectively, and their evolutions since April, 2015.

Current vs. Normal Dekadal ITF Position
and RFE Accumulated Precipitation (mm)
May 2015, Dekad 1



Mean Western Portion of the ITF: Averaged 10W to 10E
As of: May 2015, Dekad 1



Mean Eastern Portion of the ITF: Averaged 20E to 35E
As of: May 2015, Dekad 1

