



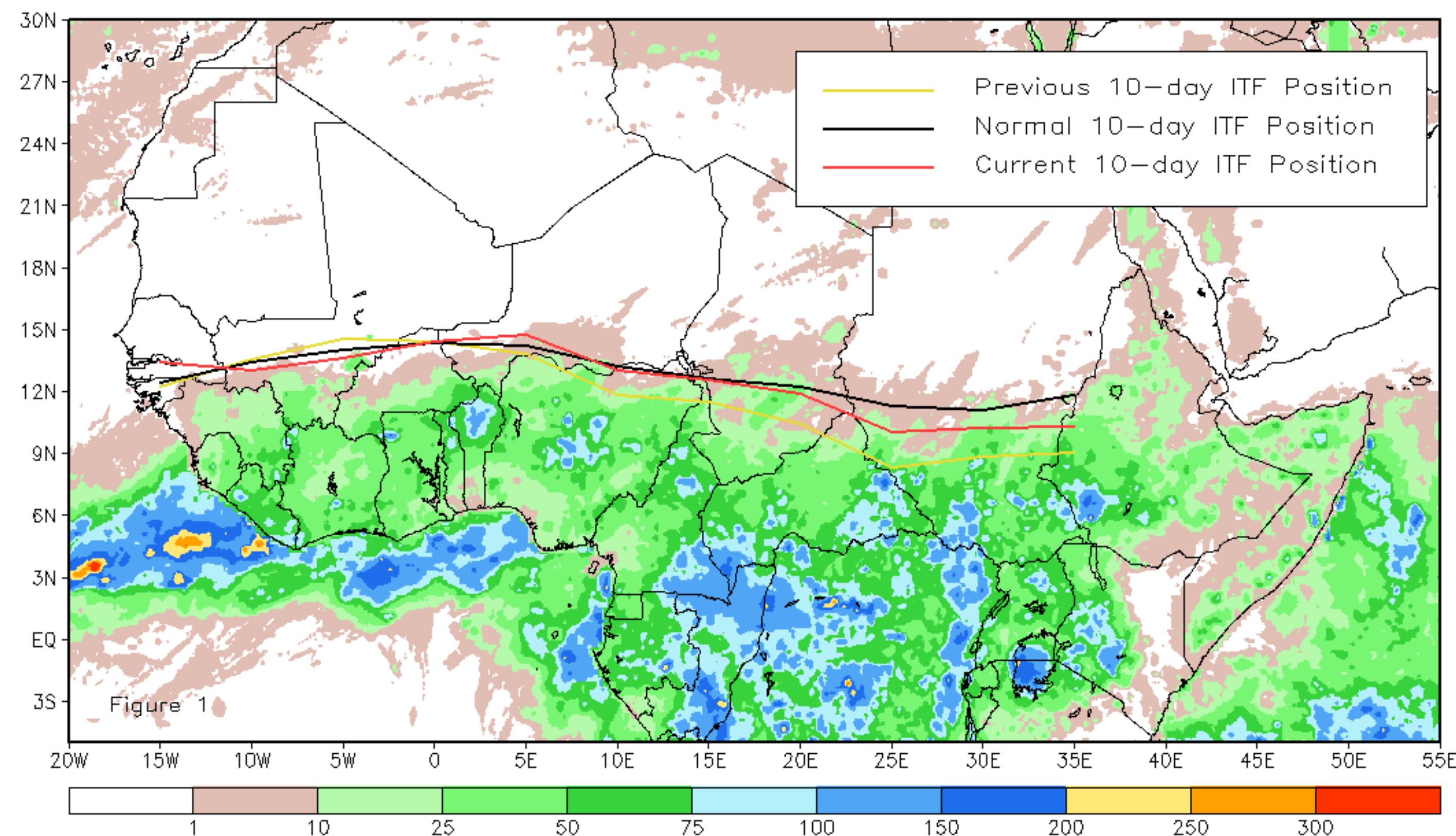
CPC Africa Desk InterTropical (ITF) Front Analysis

May 2012, Dekad 1

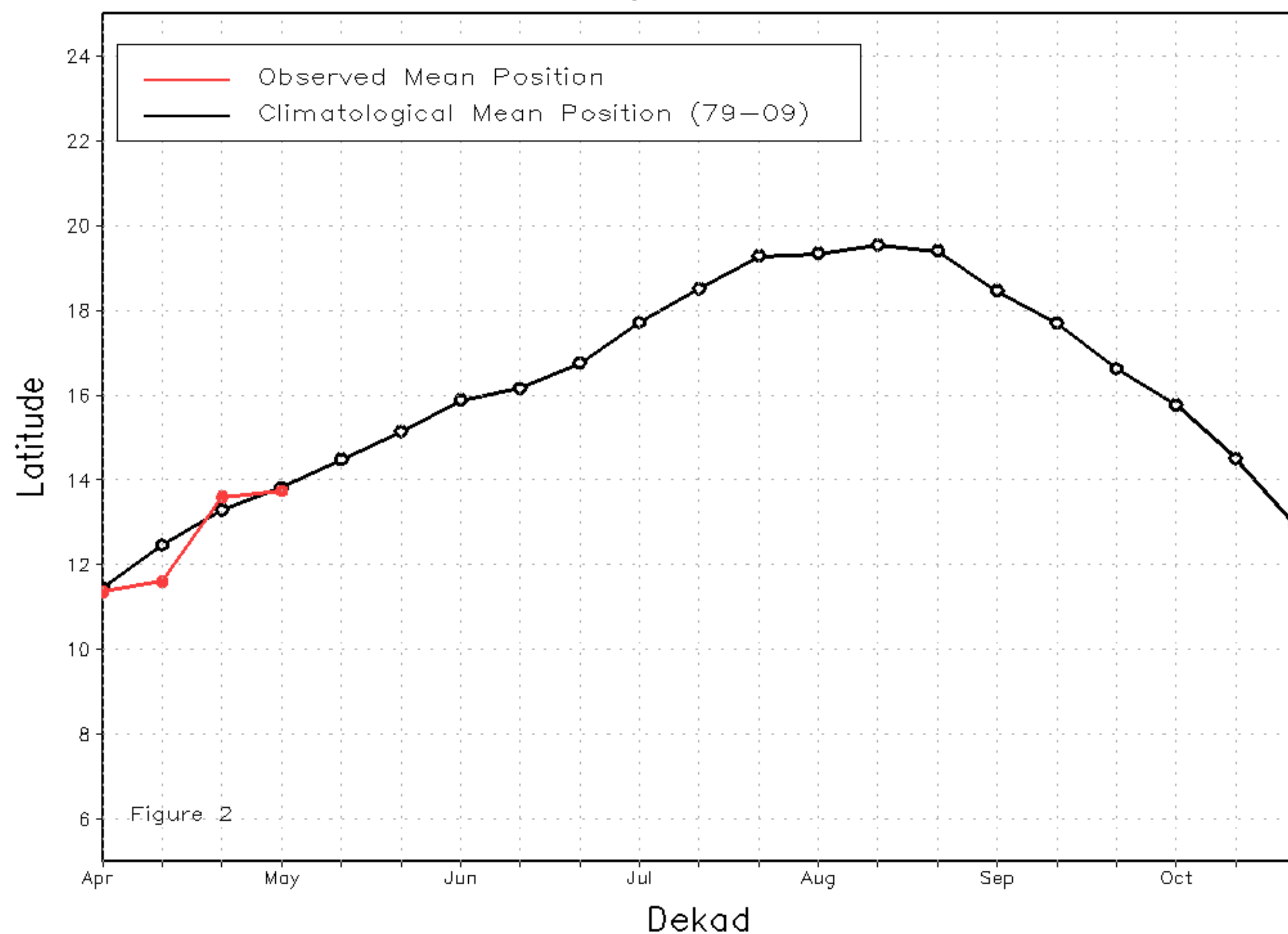
Discussion:

From May 1- 10, 2012, the ITF experienced marginal advancement throughout many portions of Africa. The mean western portion of the ITF was located 13.7 degrees during late April, and experienced a slight retreat compared to its position during the last dekad in April. The near average position in the west was associated with enhanced rains across parts of northern Ghana and Burkina Faso, however a suppression of rains were observed over parts of southern Mali and Guinea in the last ten days. The mean eastern portion of ITF was approximately located at 10.6 degrees, with much poleward movement compared to its position during the previous dekad. However, its current position still remains 1 degree below the climatological mean (11.6) for early May. The anomalous eastern ITF position was associated with robust northerly flow across eastern Sahara suppressing rains and moisture over South Sudan during the first week in may. Figure 1 shows the current ITF position relative to the climatological average position for the first dekad of May and its previous position during the last dekad of April. Figures 2 and 3 are time series, illustrating the latitudinal means of the western and eastern portions of the ITF, respectively, and their evolutions since the start of April.

Current vs. Normal Dekadal ITF Position
and RFE Accumulated Precipitation (mm)
May 2012, Dekad 1



Mean Western Portion of the ITF: Averaged 10W to 10E
As of: May 2012, Dekad 1



Mean Eastern Portion of the ITF: Averaged 20E to 35E
As of: May 2012, Dekad 1

