



# CPC Africa Desk InterTropical (ITF) Front Analysis

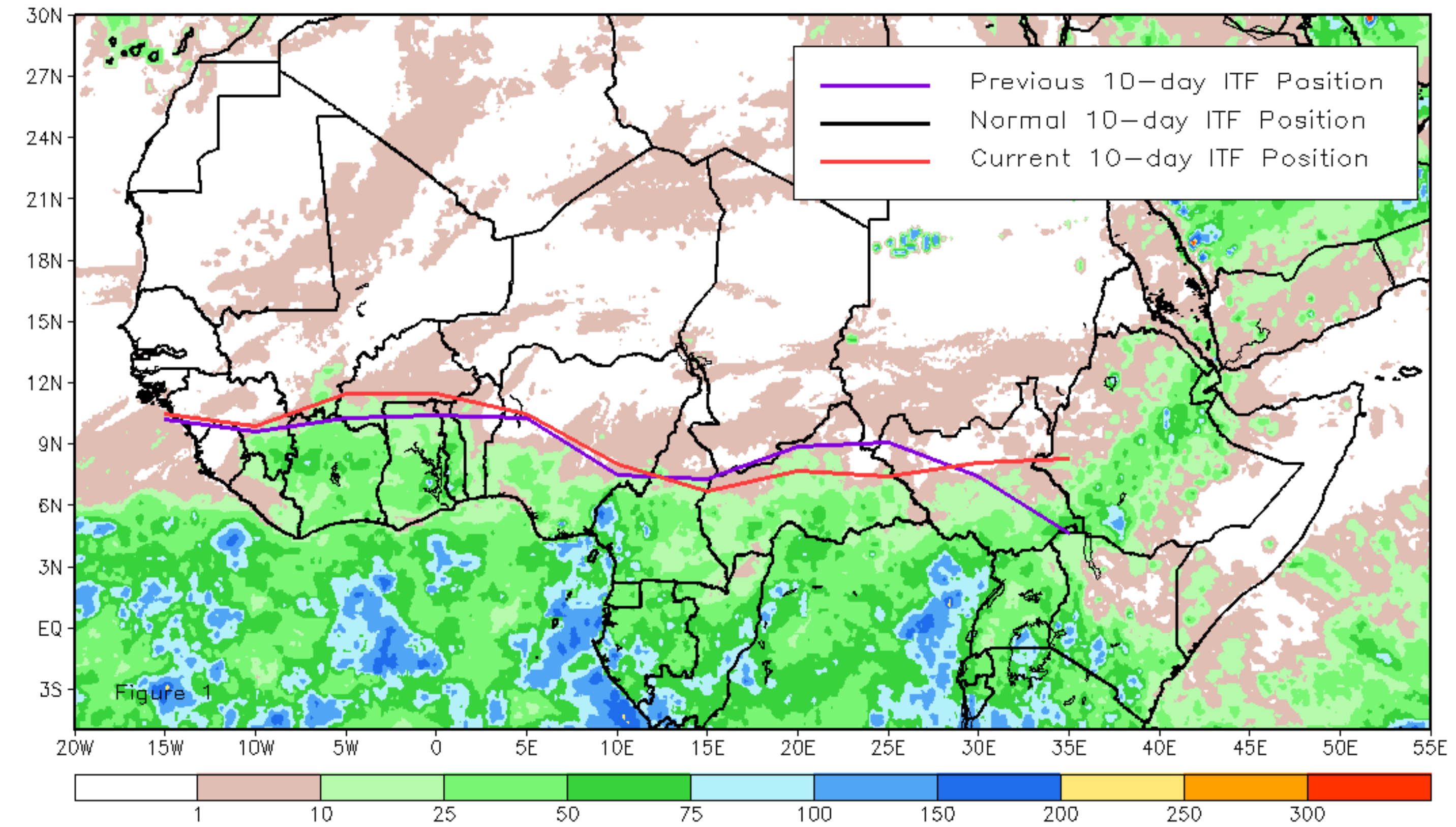
## March 2024, Dekad 3

### Discussion:

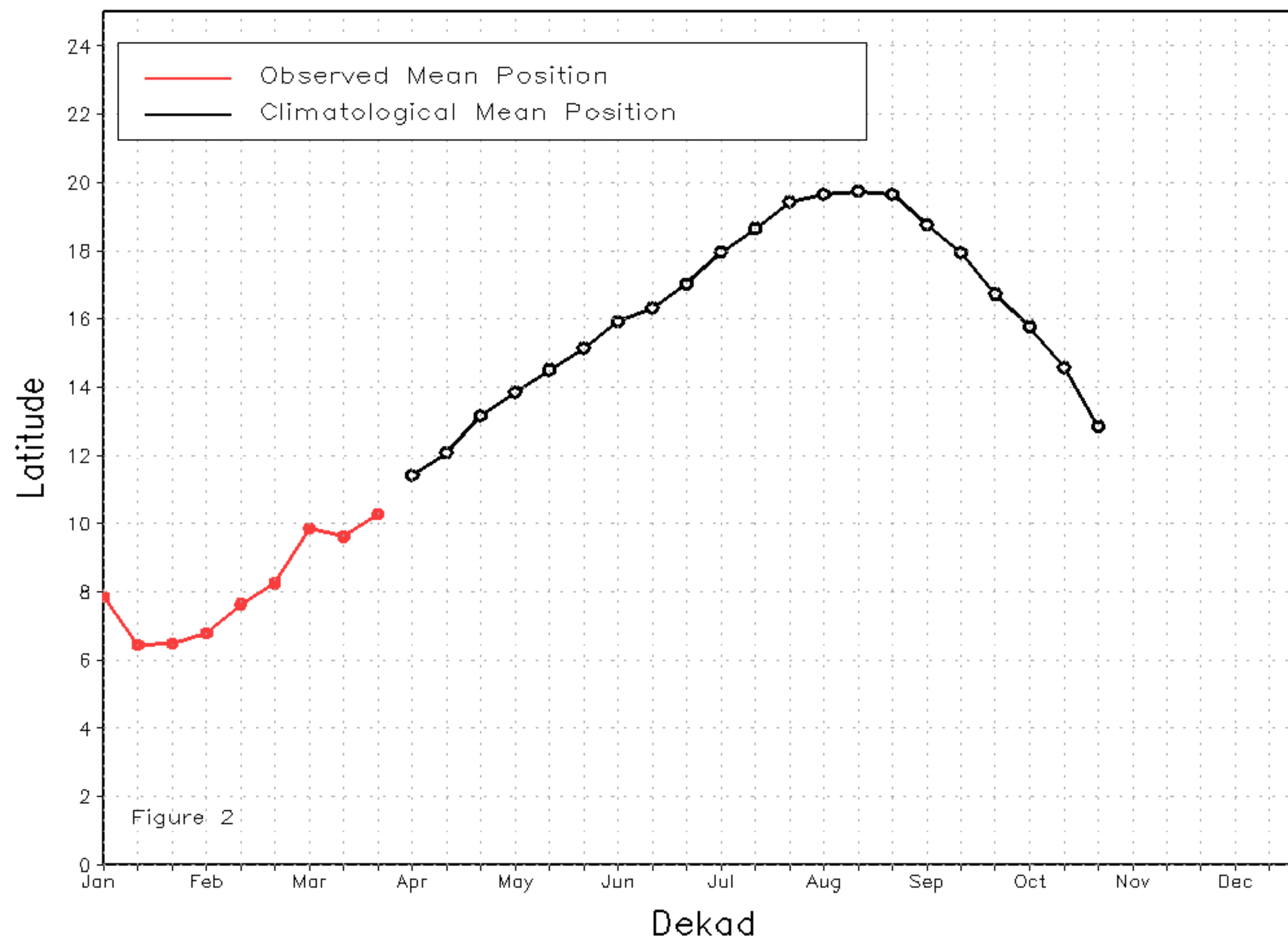
Between March 21 and March 31, the Inter-Tropical Front (ITF) shifted northward in the western region and southward in the eastern region compared to its previous location. The current ITF is now located around 10.3N in the western portion (10W-10E), which is north of its previous position at 9.6N. In the eastern part (20E-35E), the current ITF location is approximately 7.9N, compared to its previous position at 7.5N. Figure 1 displays the current position of the ITF during the 3rd dekad of March and its previous position during the 2nd dekad of March. Figures 2 and 3 are time series, illustrating the latitudinal positions for the western and eastern portions of the ITF, respectively, and their seasonal evolutions since the beginning of April 2024.

Current vs. Normal Dekadal ITF Position  
and RFE Accumulated Precipitation (mm)

March 2024, Dekad 3



Mean Western Portion of the ITF: Averaged 10W to 10E  
As of: March 2024, Dekad 3



Mean Eastern Portion of the ITF: Averaged 20E to 35E  
As of: March 2024, Dekad 3

