



# CPC Africa Desk InterTropical (ITF) Front Analysis

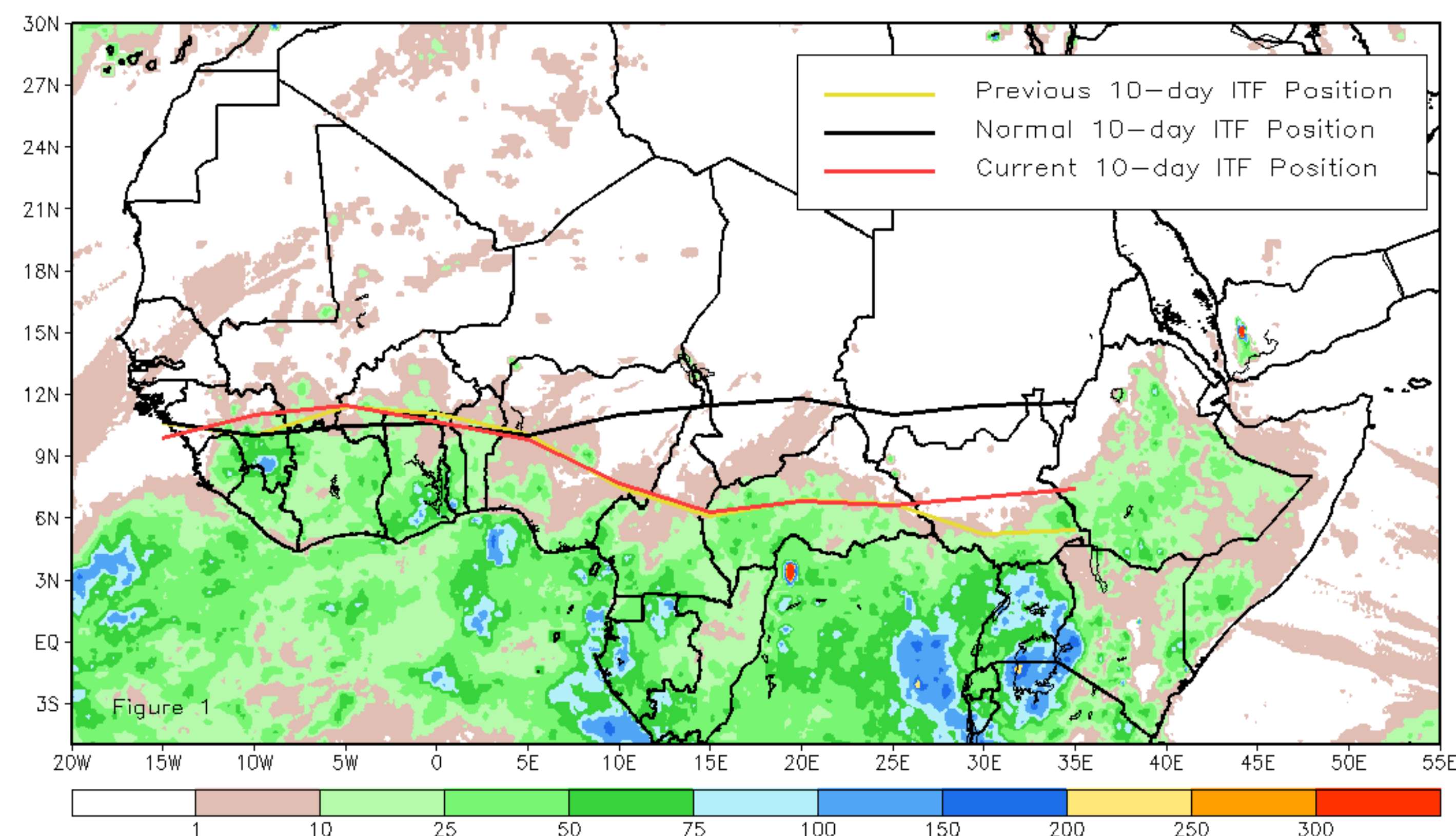
## March 2022, Dekad 3

### Discussion:

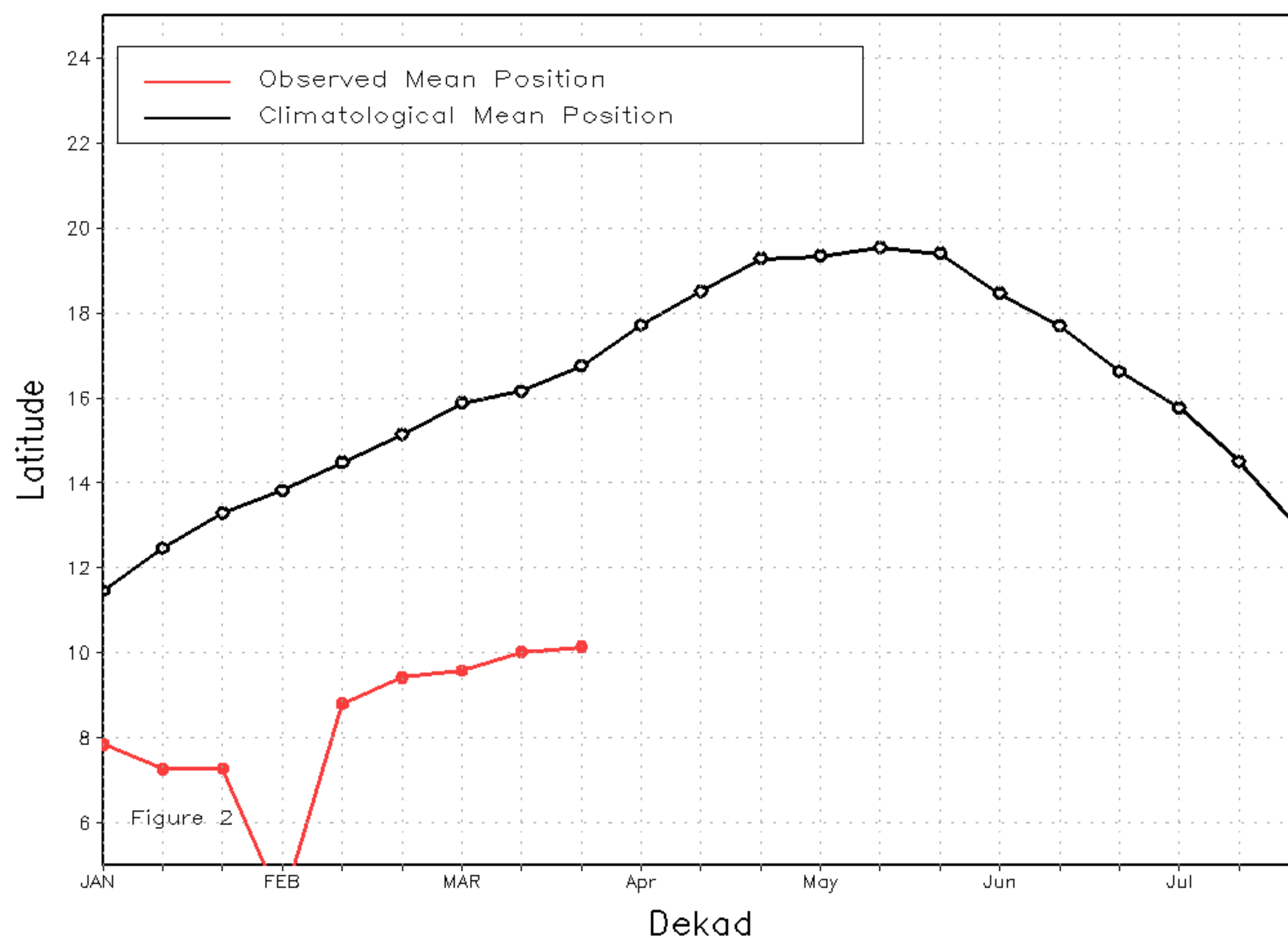
From 21-31 March, the ITF moved further north relative to its previous position, which resulted in an overall anomalous northerly position, except along longitudes 15W and 2W-5E. The western (10W-10E) portion of the ITF was located approximately at 10.1N, which is below the climatology position by 0.3 degree. The eastern (20E-35E) portion of the ITF was approximated at 7.0N, which is below the climatological position by 4.5 degree. Figure 1 displays the current position of the ITF relative to the long-term average position during the 3rd dekad of March and its previous position during the 2nd dekad of March. Figures 2 and 3 are time series, illustrating the latitudinal values of the western and eastern portions of the ITF, respectively, and their seasonal evolutions since the beginning of January, 2022.

Current vs. Normal Dekadal ITF Position  
and RFE Accumulated Precipitation (mm)

March 2022, Dekad 3



Mean Western Portion of the ITF: Averaged 10W to 10E  
As of: March 2022, Dekad 3



Mean Eastern Portion of the ITF: Averaged 20E to 35E  
As of: March 2022, Dekad 3

