

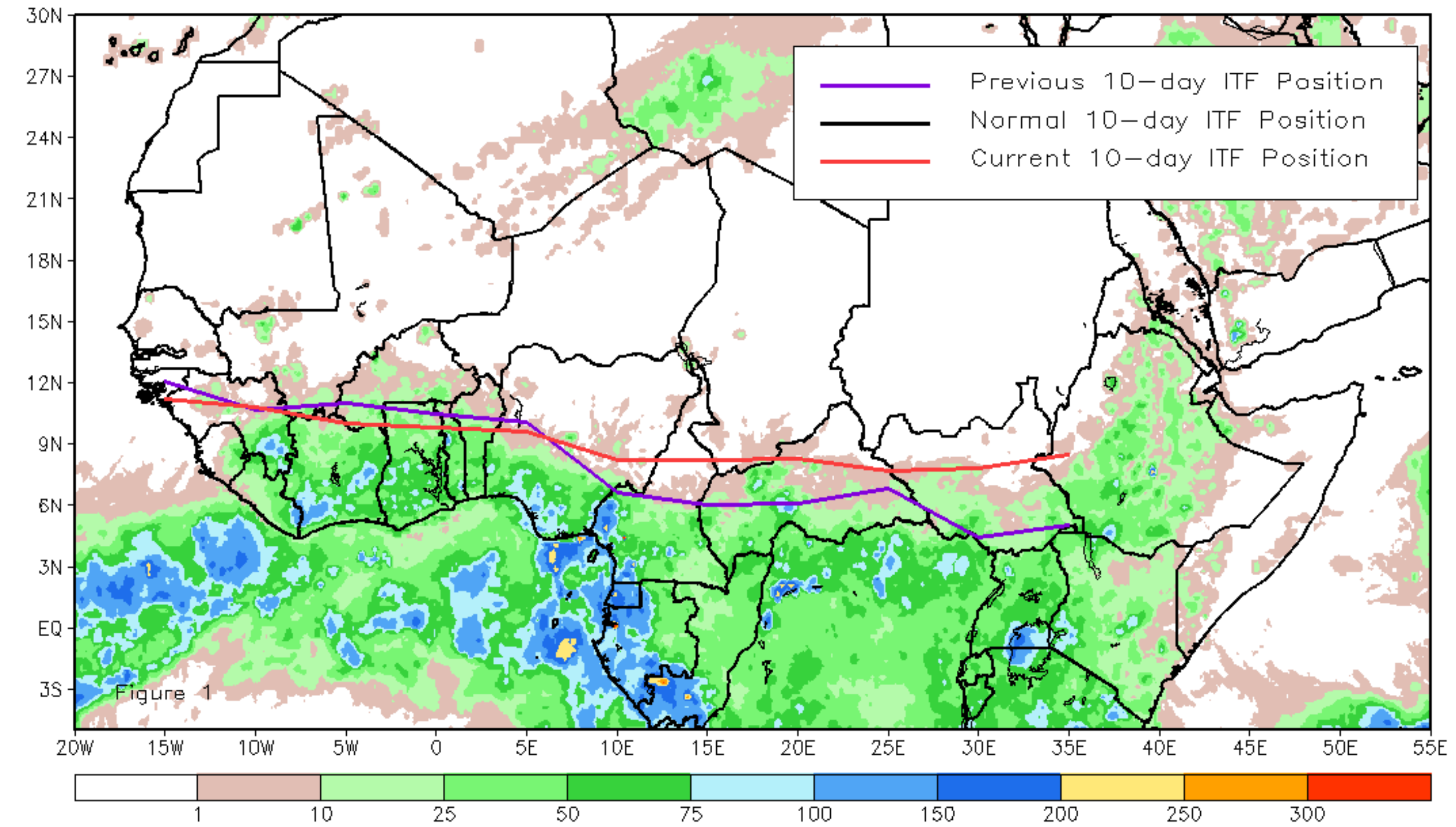


CPC Africa Desk InterTropical (ITF) Front Analysis March 2025, Dekad 2

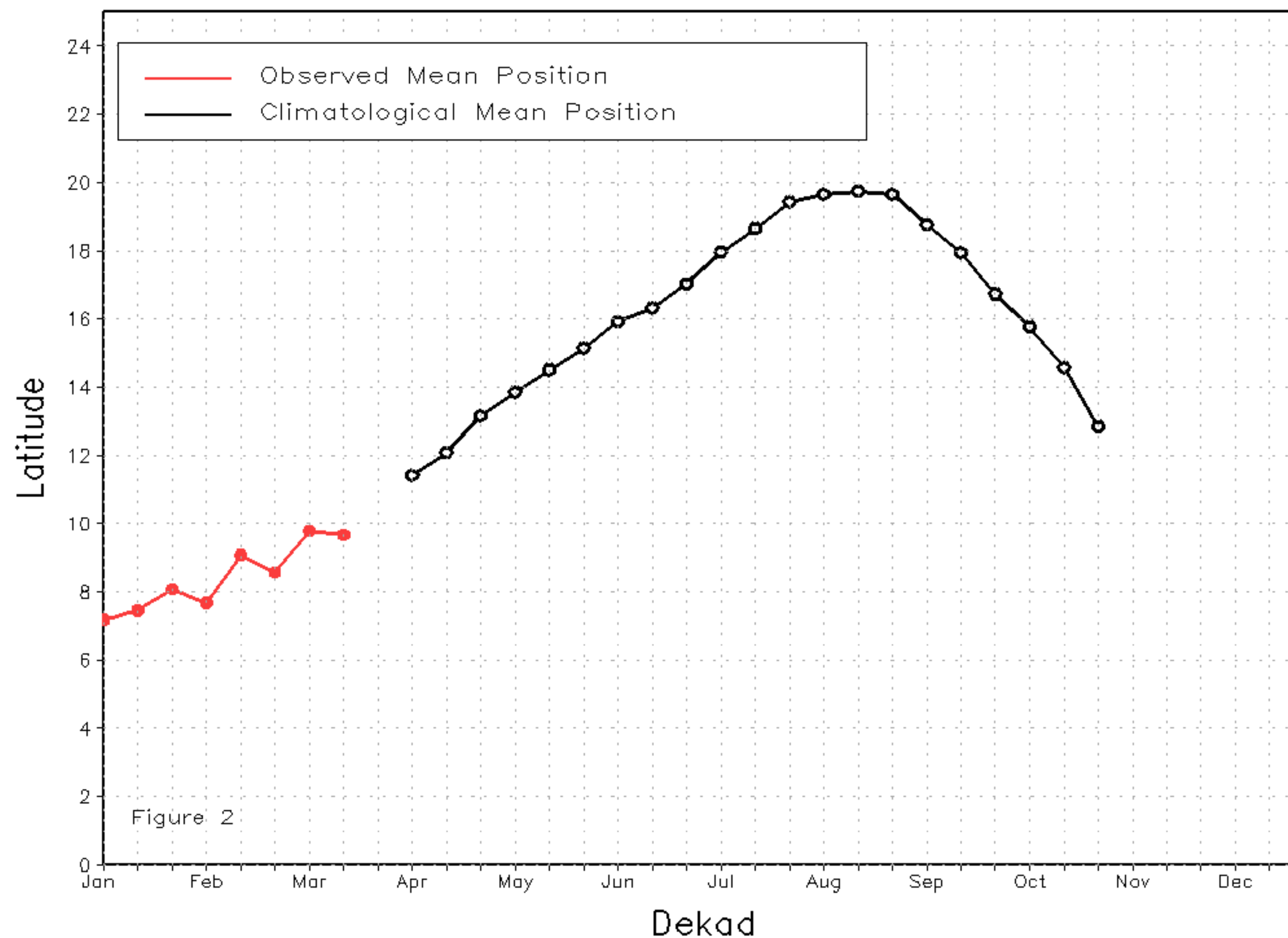
Discussion:

From March 11 to 20, the current Inter-Tropical Front (ITF) moved southward in the western portion and northward in the eastern portion compared to its previous position. Currently, the ITF is situated around 9.7N in the western area (10W-10E), south of its earlier position at 9.8N. In the eastern part (20E-35E), the current ITF location is around 8.1N compared to 5.6N in the previous position. Figure 1 displays the current position of the ITF during the 2nd dekad of March and its previous position during the 1st dekad of March. Figures 2 and 3 are time series, illustrating the latitudinal positions for the western and eastern portions of the ITF, respectively, and their seasonal evolutions since the beginning of April 2025.

Current vs. Normal Dekadal ITF Position
and RFE Accumulated Precipitation (mm)
March 2025, Dekad 2



Mean Western Portion of the ITF: Averaged 10W to 10E
As of: March 2025, Dekad 2



Mean Eastern Portion of the ITF: Averaged 20E to 35E
As of: March 2025, Dekad 2

