



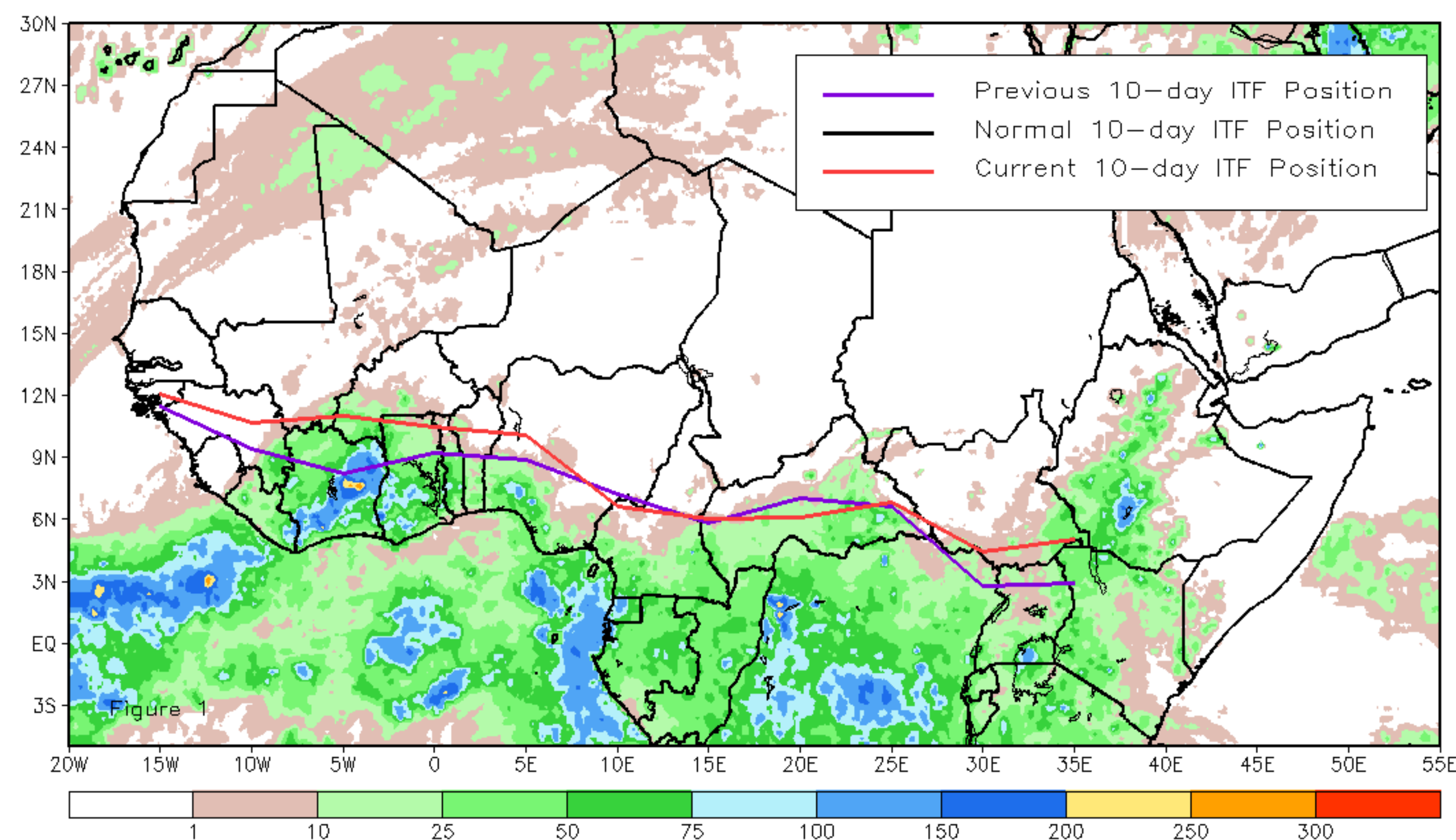
CPC Africa Desk InterTropical (ITF) Front Analysis

March 2025, Dekad 1

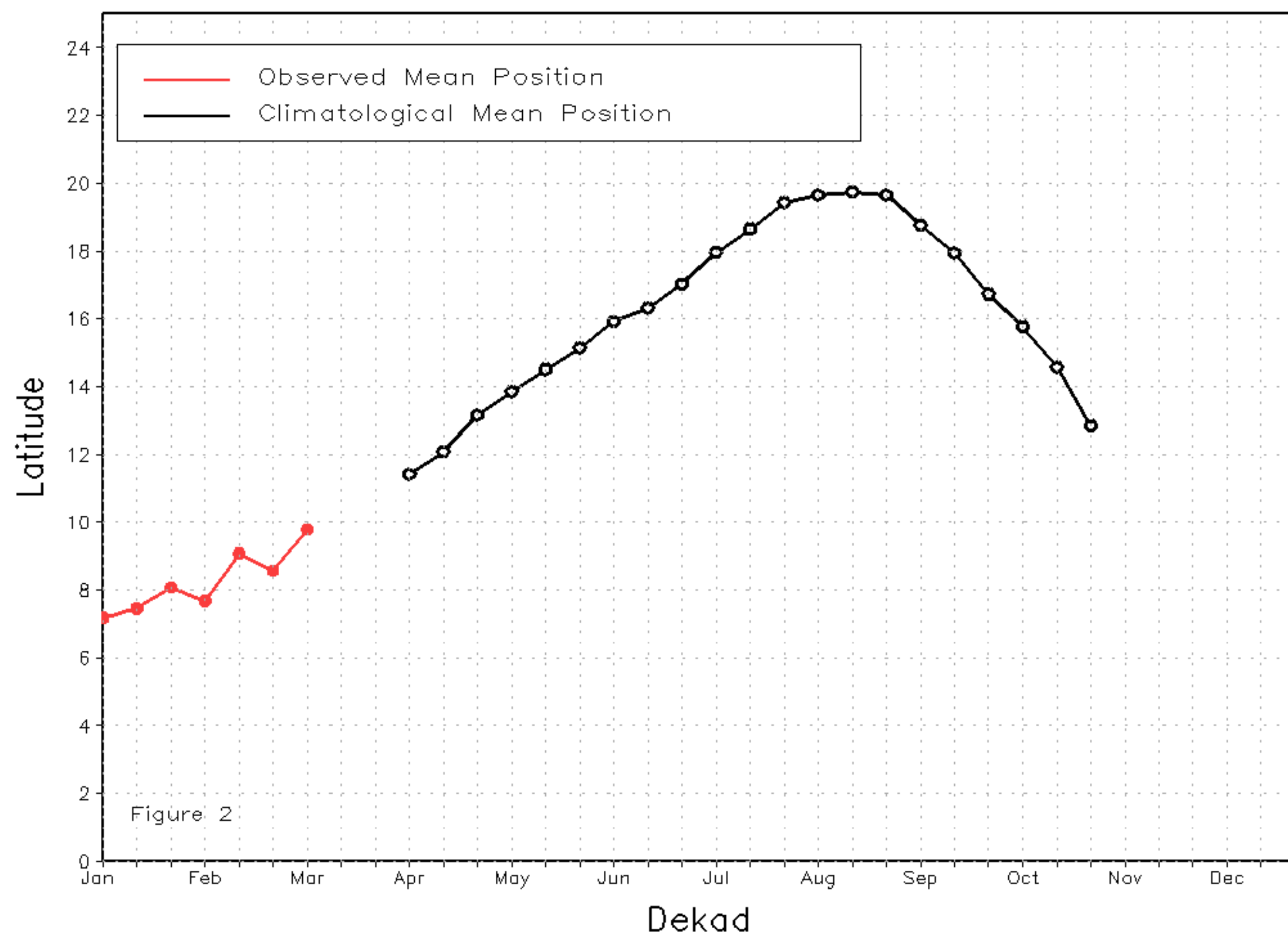
Discussion:

From March 1 to 10, the current Inter-Tropical Front (ITF) moved northward along most of its entire length compared to its previous position. Specifically, the current ITF was located at approximately 9.8N in the western portion (10W-10E), which is north of its previous position at 8.6N. In the eastern part (20E-35E), the current ITF location is around 5.6N compared to 4.8N in the previous position. Figure 1 displays the current position of the ITF during the 1st dekad of March and its previous position during the 3rd dekad of February. Figures 2 and 3 are time series, illustrating the latitudinal positions for the western and eastern portions of the ITF, respectively, and their seasonal evolutions since the beginning of April 2025.

Current vs. Normal Dekadal ITF Position
and RFE Accumulated Precipitation (mm)
March 2025, Dekad 1



Mean Western Portion of the ITF: Averaged 10W to 10E
As of: March 2025, Dekad 1



Mean Eastern Portion of the ITF: Averaged 20E to 35E
As of: March 2025, Dekad 1

