



CPC Africa Desk InterTropical (ITF) Front Analysis

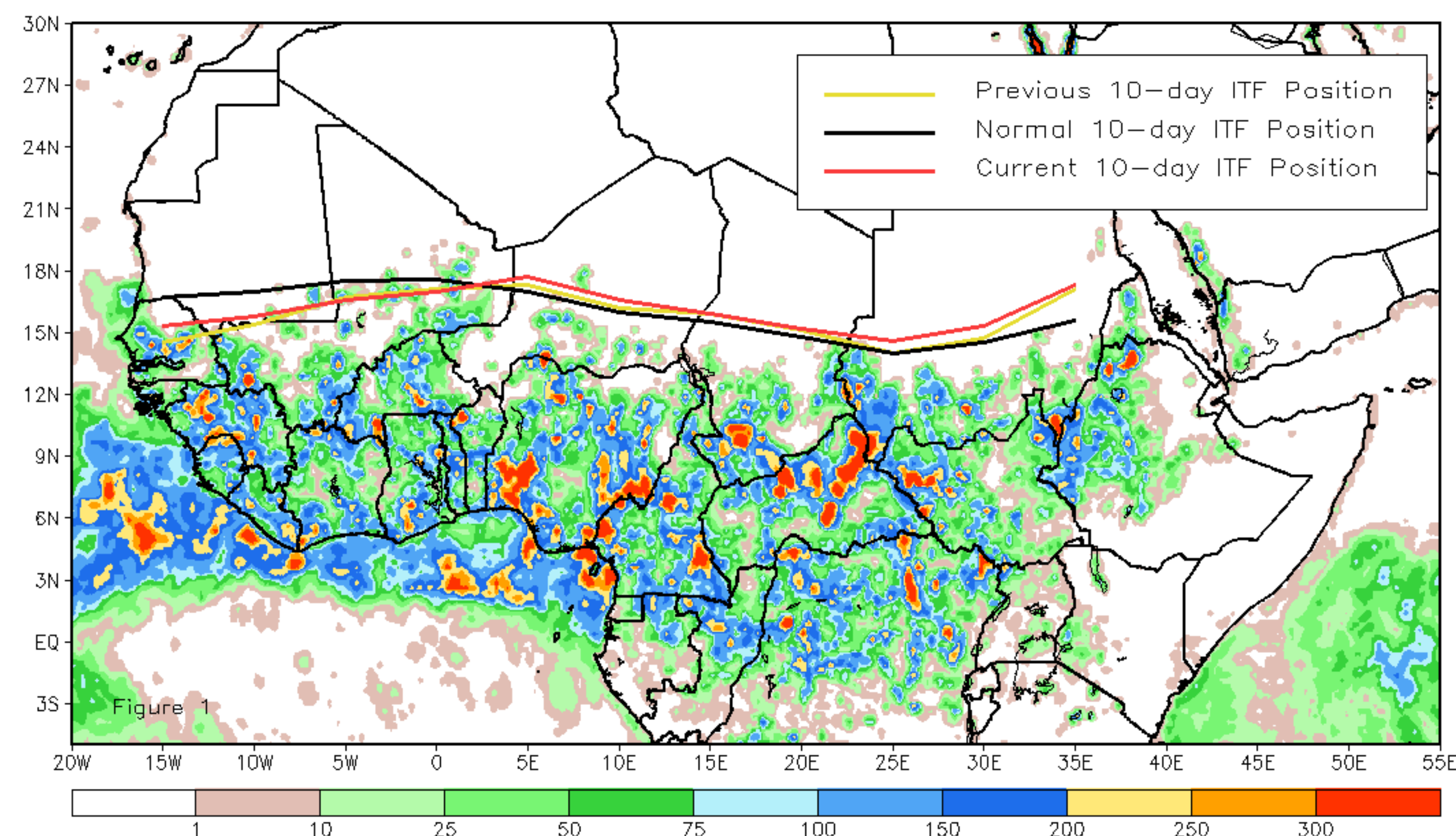
June 2021, Dekad 3

Discussion:

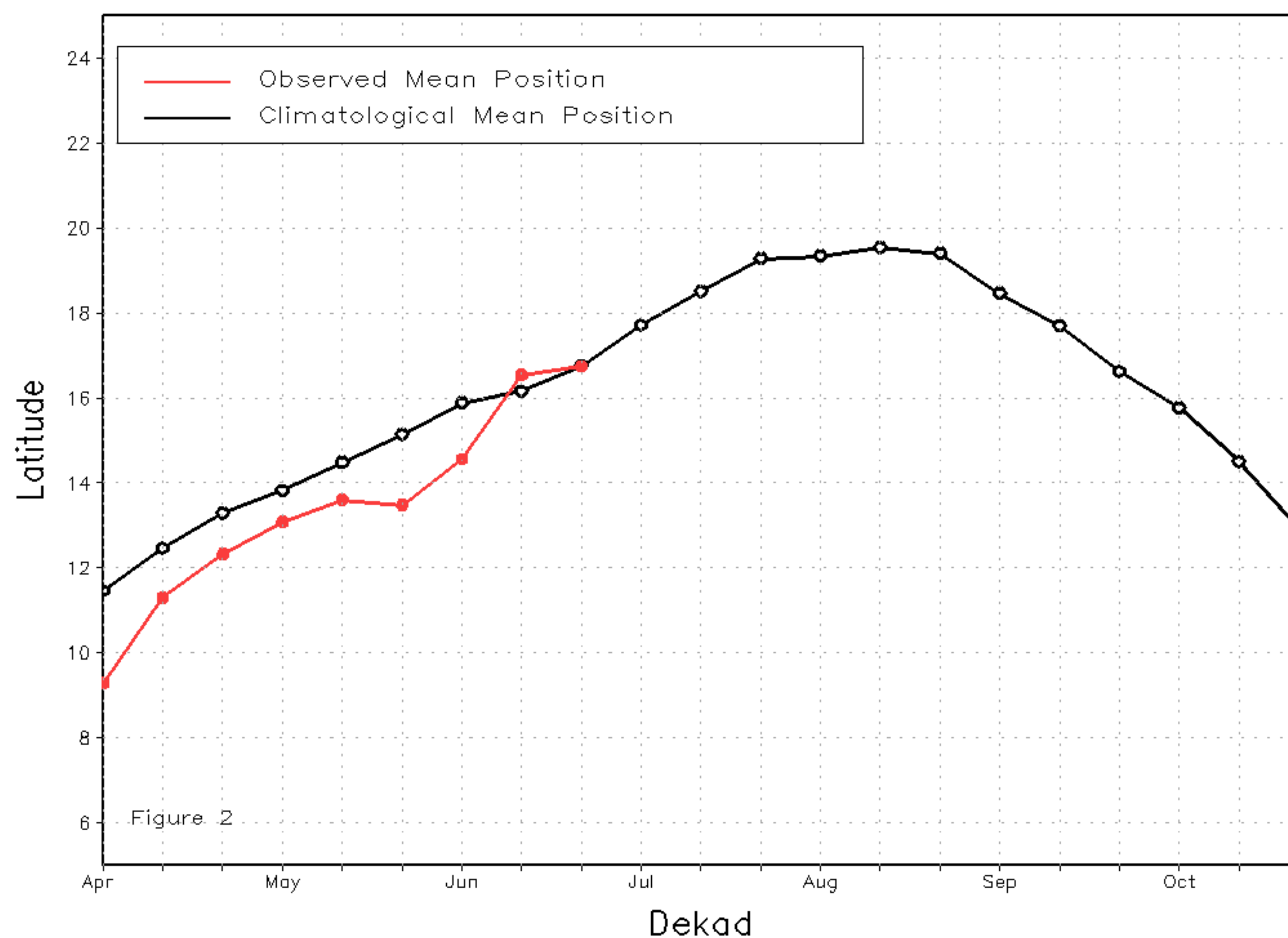
From 21-30 of June, the ITF has moved slightly north along its previous dekad position. The western (10W-10E) portion of the ITF was located approximately at 16.4N, whereas the average position was centered at 16.2N which was the same position as its climatology. This position of the ITF explains the continuation of moderate rainfall across some portions of northern Senegal, and southern Niger. The eastern (20E-35E) portion of the ITF was located at 15.6N, which was north to the climatological position centered at 14.6N. This position could explain the increase of rainfall across southern Chad, southern Sudan and northwestern Ethiopia. Figure 1 shows the current position of the ITF relative to the long-term average position during the 3rd dekad of June and its previous position during the 2nd dekad of June. Figures 2 and 3 are time series, illustrating the latitudinal values of the western and eastern portions of the ITF, respectively, and their seasonal evolutions since the beginning of April, 2021.

Current vs. Normal Dekadal ITF Position
and RFE Accumulated Precipitation (mm)

June 2021, Dekad 3



Mean Western Portion of the ITF: Averaged 10W to 10E
As of: June 2021, Dekad 3



Mean Eastern Portion of the ITF: Averaged 20E to 35E
As of: June 2021, Dekad 3

